



WILMOT ROAD, N17
£725,000 FREEHOLD

DESCRIPTION:

This three bedroom family home can be found on this ever popular turning in N17.

Sole Agents.

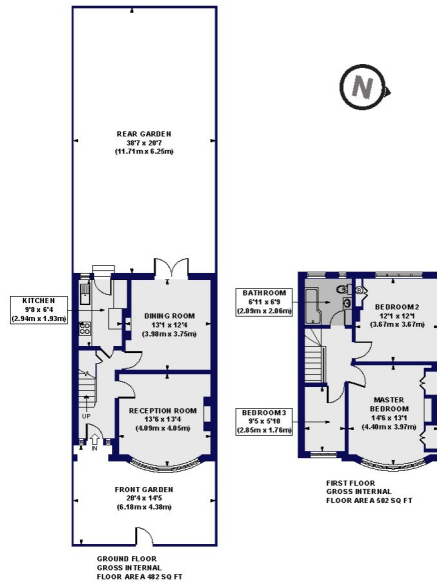
Harringay | 020 8800 5151 | harringay@winkworth.co.uk

Winkworth

for every step...

winkworth.co.uk

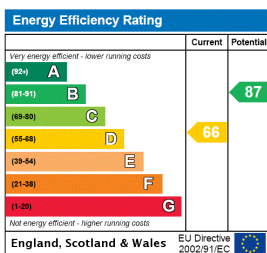
Wilmot Road, N17
Approx. Gross Internal Floor Area 984 sq. ft / 91.42 sq. m



All measurements of walls, doors, windows, fittings and appliances, including their size and location, are shown as standard sizes and do not include any variations or alterations to the walls, doors, windows, fittings and appliances. All measurements are taken from the internal face of the walls, doors, windows, fittings and appliances. All measurements are taken from the internal face of the walls, doors, windows, fittings and appliances. All measurements are taken from the internal face of the walls, doors, windows, fittings and appliances.

Winkworth

This floorplan is for illustration purposes only and is not to scale. The position and size of doors, windows, appliances and other features are approximate.



Tenure: Freehold

Term: 0 year and 0 months

Service Charge: £0 per annum

Ground Rent: £ 0 Annually (subject to increase)

Council Tax Band:

Where no figures are shown, we have been unable to ascertain the information. All figures that are shown were correct at the time of printing.

Harringay | 020 8800 5151 | harringay@winkworth.co.uk

Winkworth

for every step...

winkworth.co.uk

Winkworth wishes to inform prospective buyers and tenants that these particulars are a guide and act as information only. All our details are given in good faith and believed to be correct at the time of printing but they don't form part of an offer or contract. No Winkworth employee has authority to make or give any representation or warranty in relation to this property. All fixtures and fittings, whether fitted or not are deemed removable by the vendor unless stated otherwise and room sizes are measured between internal wall surfaces, including furnishings.