



Agnes Road, Acton, W3

£535,000 Share of Freehold

A spacious three double bedroom upper maisonette with off street parking.

Reception Room | Kitchen | 3 Bedrooms | Bathroom | 822 Sq Ft / 76 Sq M | Council Tax Band C |
EPC Rating Band D

Winkworth



LOCATION

Agnes Road is found on the borders of Shepherd's Bush and Acton, close to both Acton Park and Wendell Park. The David Lloyd and Mode Club health clubs are both close by, whilst London Overground services are on offer at Acton Central station, which is circa 0.5 miles away. The amenities of Chiswick, Shepherds Bush and Acton are all within easy reach.

DESCRIPTION

Offering extremely spacious accommodation arranged over the top two floors of a converted Edwardian house, accommodation comprises entrance hall, reception room, kitchen, bathroom and three double bedrooms. The property further benefits from an off street parking space.





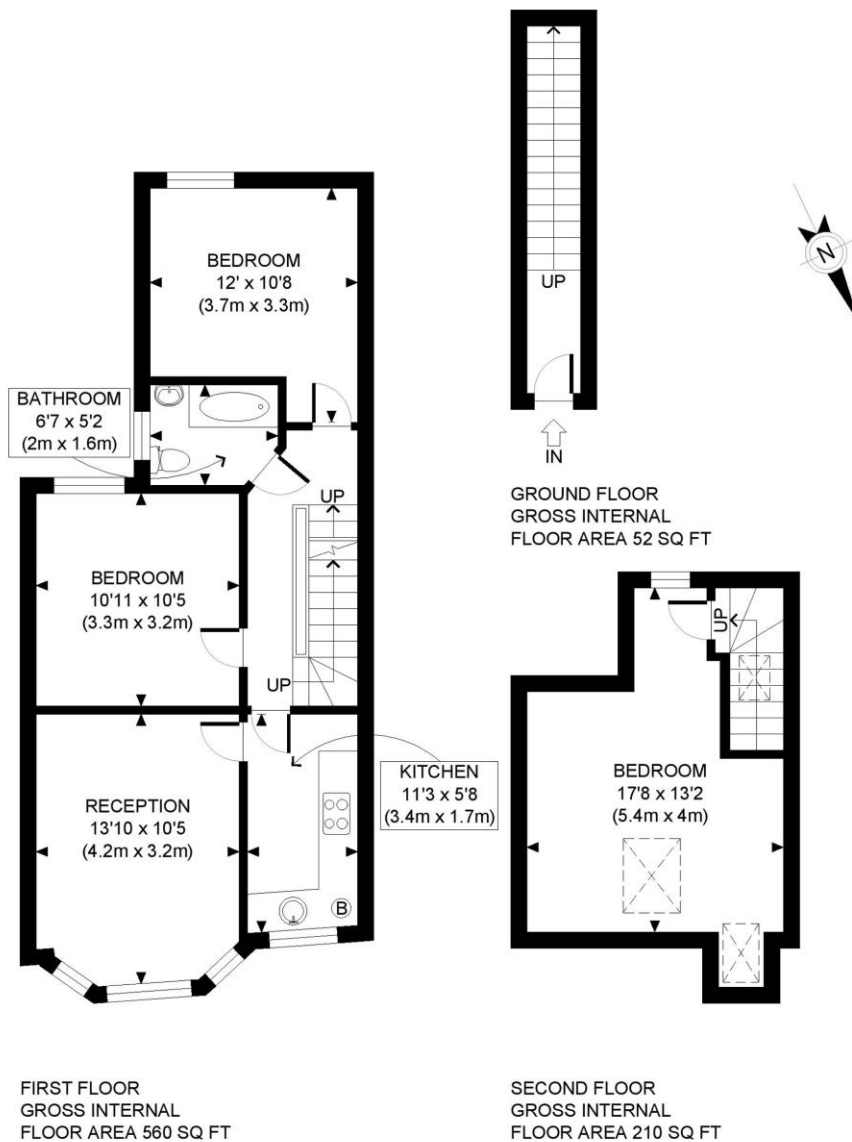
LOCAL AUTHORITY
London Borough of Ealing

TENURE
Share of Freehold.

PRICE: £535,000 Share of Freehold

Energy Efficiency Rating

	Current	Potential
Very energy efficient - lower running costs		
(92+) A		
(81-91) B		
(69-80) C		
(55-68) D	64	71
(39-54) E		
(21-38) F		
(1-20) G		
Not energy efficient - higher running costs		
England, Scotland & Wales	EU Directive 2002/91/EC	



PROPERTY PHOTO PLANS.CO.UK
ONE STOP SHOP FOR PROPERTY MARKETING

This plan is for illustrative purposes only and should be used as such by any prospective client. Whilst every attempt has been made to ensure the accuracy of the Floor Plan contained here, measurements of the doors, windows, rooms and any other items are approximate and no responsibility is taken for any errors, omissions, or misstatement. The services, systems and appliances shown have not been tested and no guarantee as to the operability or efficiency can be given.

The displayed square footage is taken from the floor plans with measurements created using the Royal Institute of Chartered Surveyors' Code of Practice for Measuring. These measurements are approximate and included for illustrative purposes only. Winkworth does not make any representation as to the accuracy of these measurements and you should seek to verify them for yourself. Winkworth accept no liability for any loss you may suffer if you rely on these measurements.

Shepherds Bush | 020 8735 3266 | shepherdsbush@winkworth.co.uk



for every step...

Under the Property Misdescriptions Act 1991, these Particulars are a guide and act as information only. All details are given in good faith and are believed to be correct at time of printing. Winkworth give no representation as to their accuracy and potential purchasers or tenants must satisfy themselves by inspection or otherwise as to their correctness. No employee of Winkworth has authority to make or give any representation or warranty in relation to this property.