



ELUNA APARTMENTS, WAPPING LANE, LONDON, E1W
£675,000 LEASEHOLD

A WONDERFUL, TWO BEDROOM PENTHOUSE APARTMENT IN WAPPING LANE.

Shoreditch | 020 7749 7650 | shoreditch@winkworth.co.uk

Winkworth

winkworth.co.uk

See things differently



DESCRIPTION:

Being offered Chain Free is this delightful, two double bedroom, modern penthouse apartment with amazing roof terrace in Wapping Lane. Spanning over 900sqft, accommodation comprises a stunning open-plan reception room and floor to ceiling dual-aspect windows with doors opening to the private terrace which is over 500sqft and offers south and west facing views across London. The kitchen is fully integrated with built in appliances which include; fridge/freezer, dishwasher, washing machine/dryer and an electric hob and oven. Two double bedrooms and family bathroom complete the property. The development also benefits from a secure parking space, secure fob access and lift access.

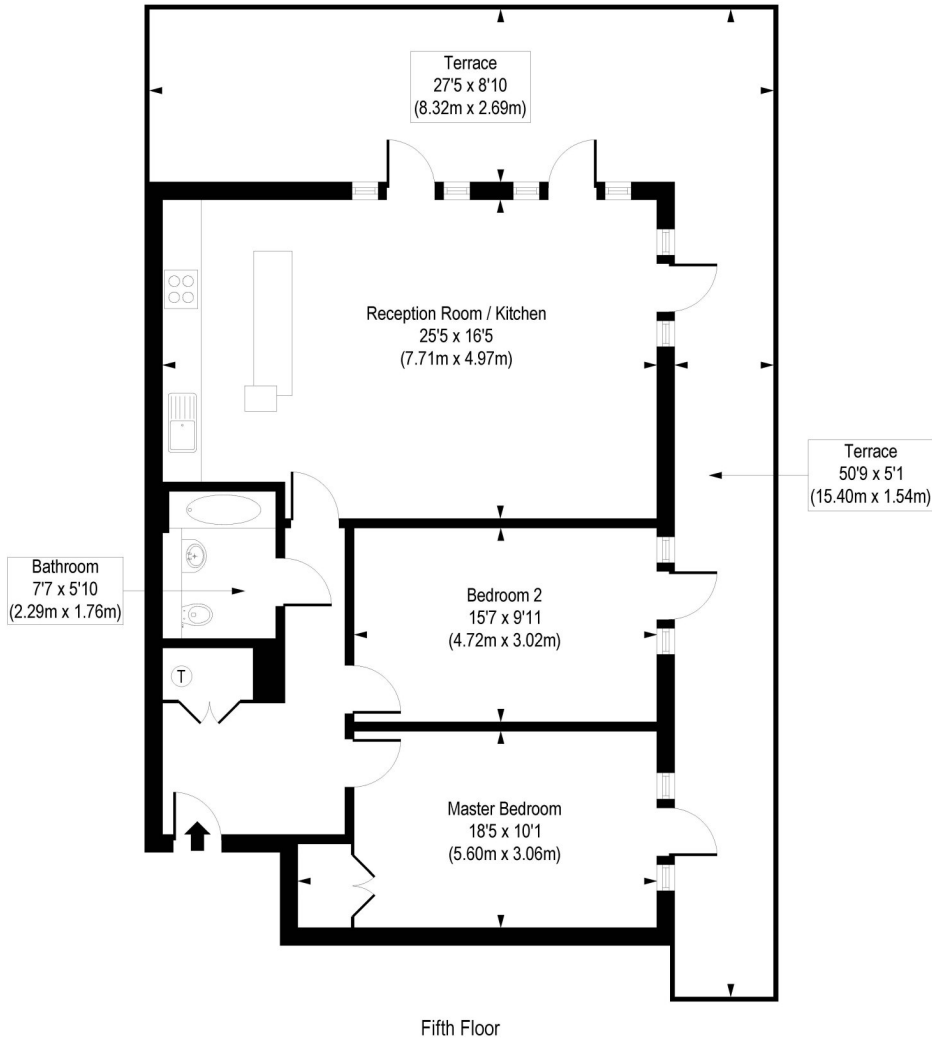
Eluna Apartments is a short distance from Tobacco Dock, Shadwell Overground/DLR Station, Aldgate East Station and Whitechapel Station offering fantastic access to Canary Wharf and the City with Crossrail now running, making it ideal for commuters to Heathrow Airport. Cycle Superhighway is immediately outside and there is a wealth of local amenities in Shadwell, Whitechapel High Street and Commercial Road. Then there is also Spitalfields market and Brick Lane close by.

Winkworth



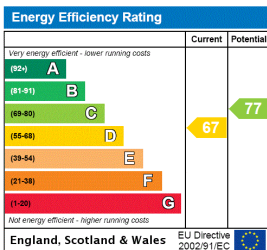
Winkworth

Eluna Apartments, Wapping Lane, E1W
 Approx. Gross Internal Floor Area 909 sq. ft / 84.45 sq. m



COMPLIANT WITH RICS CODE OF MEASURING PRACTICE. Floorplan is for illustrative purposes only and is not to scale. Every attempt has been made to ensure the accuracy of the floorplan shown, however all measurements, fixtures, fittings and data shown are an approximate interpretation for illustrative purposes only. Liability for errors, omissions or mis-statement through negligence or otherwise is hereby excluded.

This floorplan is for illustration purposes only and is not to scale. The position and size of doors, windows, appliances and other features are approximate.



Shoreditch | 020 7749 7650 | shoreditch@winkworth.co.uk



winkworth.co.uk

See things differently

Winkworth wishes to inform prospective buyers and tenants that these particulars are a guide and act as information only. All our details are given in good faith and believed to be correct at the time of printing but they don't form part of an offer or contract. No Winkworth employee has authority to make or give any representation or warranty in relation to this property. All fixtures and fittings, whether fitted or not are deemed removable by the vendor unless stated otherwise and room sizes are measured between internal wall surfaces, including furnishings.