



FLAT 2, CAMBRIDGE GARDENS, LONDON, W10
£2,450 PER MONTH FURNISHED, PART FURNISHED, UNFURNISHED

WELL PRESENTED TWO BEDROOM APARTMENT IN THE HEART OF LADBROKE GROVE

North Kensington | 020 7792 5000 | northkensington@winkworth.co.uk



for every step...

winkworth.co.uk



DESCRIPTION:

We are delighted to offer this fantastic two-bedroom apartment which is located in the heart of Ladbroke Grove/Notting Hill.



Winkworth

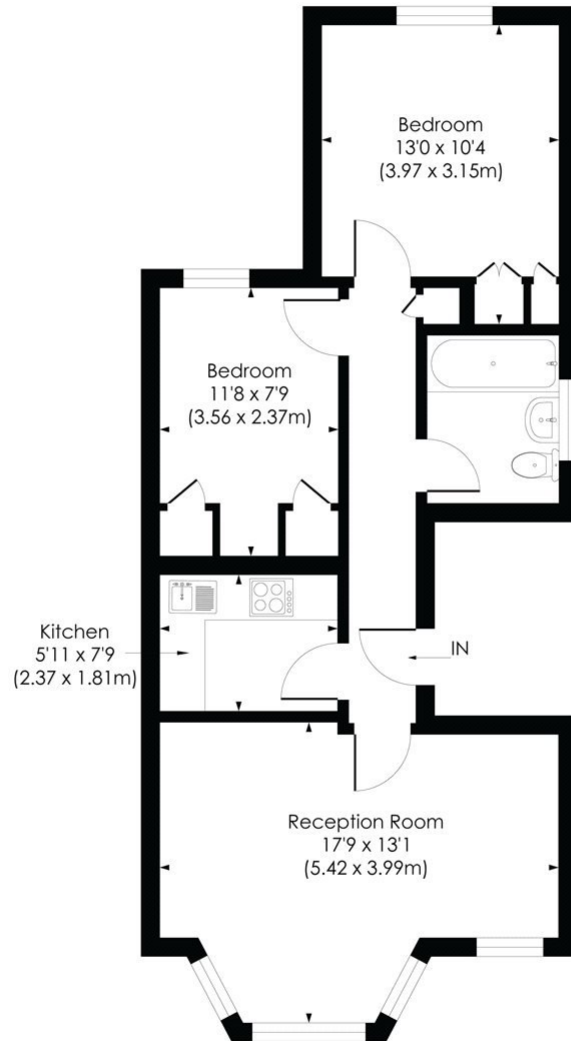
for every step...

Winkworth

for every step...

CAMBRIDGE GARDENS, W10

Approx. Gross Internal Floor Area
597 Sq. ft/55.45 Sq. m



FIRST FLOOR

© Pixangle Property Marketing Ltd. info@pixangle.com Tel: 0208 870 2118

pixangle
PROPERTY MARKETING

This floor plan has been prepared for the purpose of illustration only in accordance with the latest RICS code of measuring practice and is not to scale. All measurements and areas are approximate and whilst every effort has been made to ensure the accuracy of the plan contained here, no responsibility is taken for any error, omission or misstatement.

This floorplan is for illustration purposes only and is not to scale. The position and size of doors, windows, appliances and other features are approximate.

North Kensington | 020 7792 5000 | northkensington@winkworth.co.uk

Winkworth

for every step...

winkworth.co.uk

Winkworth wishes to inform prospective buyers and tenants that these particulars are a guide and act as information only. All our details are given in good faith and believed to be correct at the time of printing but they don't form part of an offer or contract. No Winkworth employee has authority to make or give any representation or warranty in relation to this property. All fixtures and fittings, whether fitted or not are deemed removable by the vendor unless stated otherwise and room sizes are measured between internal wall surfaces, including furnishings.