



Flat 6 The Salterns

Boscombe, BH5 1BL

GUIDE PRICE £370,000

Winkworth





ASKING PRICE - £370,000

01202 434365 | southbourne@winkworth.co.uk

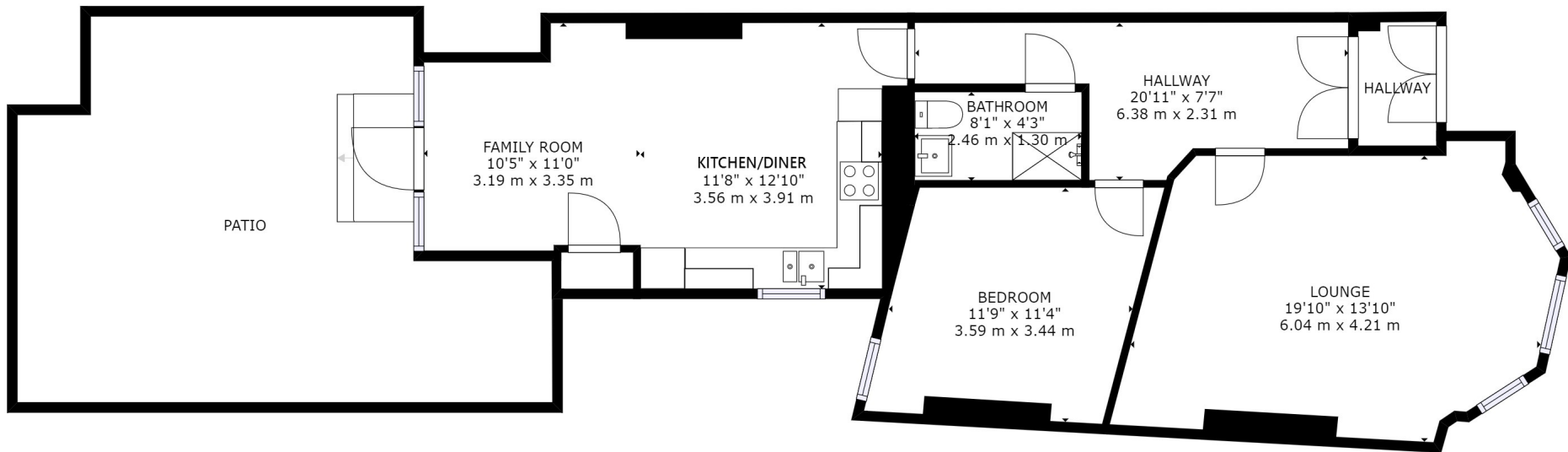
A beautifully modernised, two double bedroom flat with sea views, beautifully decorated throughout.

Winkworth Southbourne are delighted to present this beautifully decorated seaside haven. Situated just 100m from Boscombe pier this two-double bedroom, first floor apartment boasts sea views and a private entrance. The apartment has been redecorated to a high standard including a stylish and contemporary kitchen with high gloss units which is open to a beautifully decorated lounge area with double doors which open on to your own private courtyard garden.

The main bedroom is situated at the front of the property with sea views and is currently being used as a second lounge by the current owners. The second bedroom is also a good size double. Permit parking is available for the space directly outside the property.

- **Sea Views**
- **Open Plan Kitchen / Dining Room**
- **Large Formal Lounge**
- **Grand Hallway**
- **Beautifully decorated through-out**
- **Permit Parking**
- **Courtyard Garden**
- **Prime Location**





GROSS INTERNAL AREA
 FLOOR 1: 841 sq. ft, 78 m², EXCLUDED AREAS:
 PATIO: 387 sq. ft, 36 m²
 TOTAL: 841 sq. ft, 78 m²

SIZES AND DIMENSIONS ARE APPROXIMATE, ACTUAL MAY VARY.





Boscombe is the suburb of Bournemouth and is located to the south east and neighbours both Bournemouth and Southbourne. Boscombe High Street offers a varied shopping experience with a number of well known high street stores. The area benefits from a number of local attractions including the award-winning blue flag sandy beaches with a level walk promenade extending from Hengistbury Head through to Sandbanks.

A local bus service provides links to Bournemouth and Poole with a different shopping experience together with a number of restaurants and bars providing a vibrant nightlife. A local train station provides direct links to Southampton, Southampton Airport and London which is approximately 100 miles away.

Bournemouth International airport (6 miles) offers a varied schedule of flights to a number of European destinations.



Winkworth Southbourne

29 Southbourne Grove, Southbourne, Dorset, BH6 3QT
01202 434365 | southbourne@winkworth.co.uk

winkworth.co.uk/southbourne

Winkworth