

CHURCH CRESCENT, CHURCH END, FINCHLEY, LONDON, N3
£1,200,000 FREEHOLD

A WELL PRESENTED FOUR BEDROOM FAMILY HOME SET IN THE HEART OF CHURCH END FINCHLEY

Finchley | 020 8349 3388 | finchley@winkworth.co.uk



for every step...

winkworth.co.uk



Winkworth

DESCRIPTION:

Set in a prestigious road in Church End Finchley, within easy access to Regents Park Road, Finchley Central underground and Outstanding Ofsted Rated Primary schools, such as St Mary’s & Akiva, we are pleased to offer this well presented semi-detached family home. This wonderful property comprises of a spacious hallway entrance, two reception rooms which have been open to create a through lounge, eat in kitchen and downstairs wc. To the first floor the property consists of four bedrooms, family bathroom and separate wc. Further benefits include a private front and rear garden, off street parking and scope for further expansion stpp.

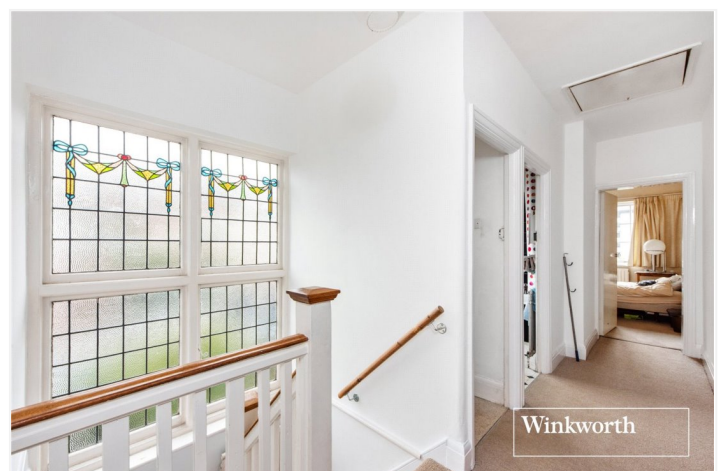
An internal viewing is highly recommended.

AT A GLANCE

- Set in the heart of Church End Finchley
- Corner Plot
- Through Lounge
- Eat in kitchen
- Four bedrooms
- Private front & rear garden
- Off street parking
- Potential to extend stpp



Winkworth

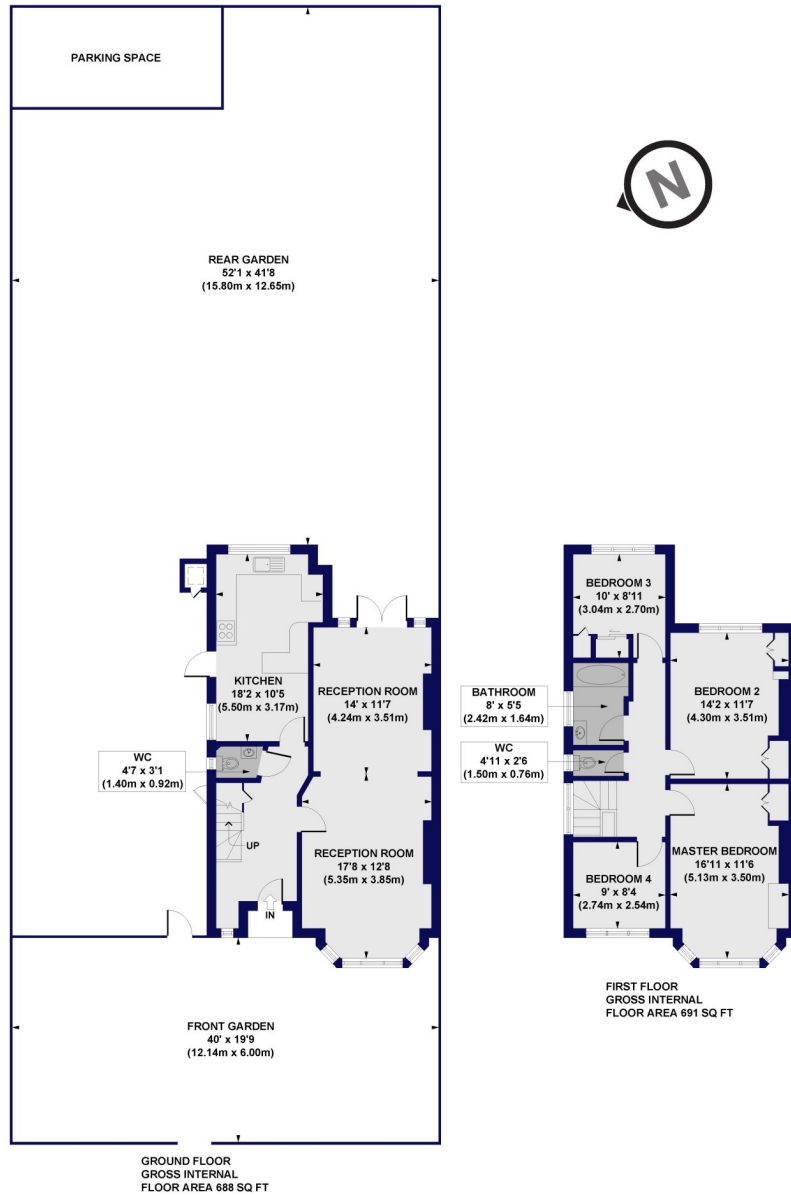


Winkworth



Kilve Church Crescent, N3

Approx. Gross Internal Floor Area 1379 sq. ft / 128.15 sq. m

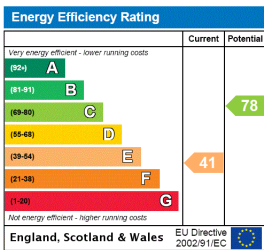


All measurements of walls, doors, windows, fittings and appliances, including their size and location, are shown as standard sizes and do not constitute any warranty or representation by the seller, their agent or CP Creative. Any intending purchaser must satisfy himself by inspection or otherwise as to the correctness of the information contained in these plans. This plan is for illustrative purposes only and should be used as such by any prospective purchasers.

Winkworth

This floorplan is for illustration purposes only and is not to scale. The position and size of doors, windows, appliances and other features are approximate.

Tenure: Freehold



Winkworth

Finchley | 020 8349 3388 | finchley@winkworth.co.uk

for every step...

winkworth.co.uk

Winkworth wishes to inform prospective buyers and tenants that these particulars are a guide and act as information only. All our details are given in good faith and believed to be correct at the time of printing but they don't form part of an offer or contract. No Winkworth employee has authority to make or give any representation or warranty in relation to this property. All fixtures and fittings, whether fitted or not are deemed removable by the vendor unless stated otherwise and room sizes are measured between internal wall surfaces, including furnishings.