



KING HENRYS REACH, MANBRE ROAD, LONDON, W6
£750,000 LEASEHOLD

Fulham & Parsons Green | 020 7731 3388 | fulham@winkworth.co.uk

Winkworth

for every step...

winkworth.co.uk



DESCRIPTION:

An immaculately presented purpose built two double bedroom flat in the hugely popular King Henry's Reach development. The building is located on Manbre Road and is within immediate proximity of the River Thames and also a short walk from Hammersmith tube station. The flat is well arranged on the second floor (served by a lift) with an excellent reception room benefiting from access to a balcony and ample space for a dining table, two generous double bedrooms both of which have the advantage of built in wardrobes. The master has an ensuite shower room and a second bathroom serves the remainder of the flat. The kitchen is well modern and well equipped and there is an additional study area located at the entrance of the flat. The property has no onward chain, a private parking space and the development comes with a 24 hour portorage.

Manbre Road is situated a short walk from Fulham Palace Road and Hammersmith Broadway (District, Piccadilly and Hammersmith and City Line). An extensive range of local amenities, shops and restaurants can be found nearby at Fulham Reach and along the riverside towpath.

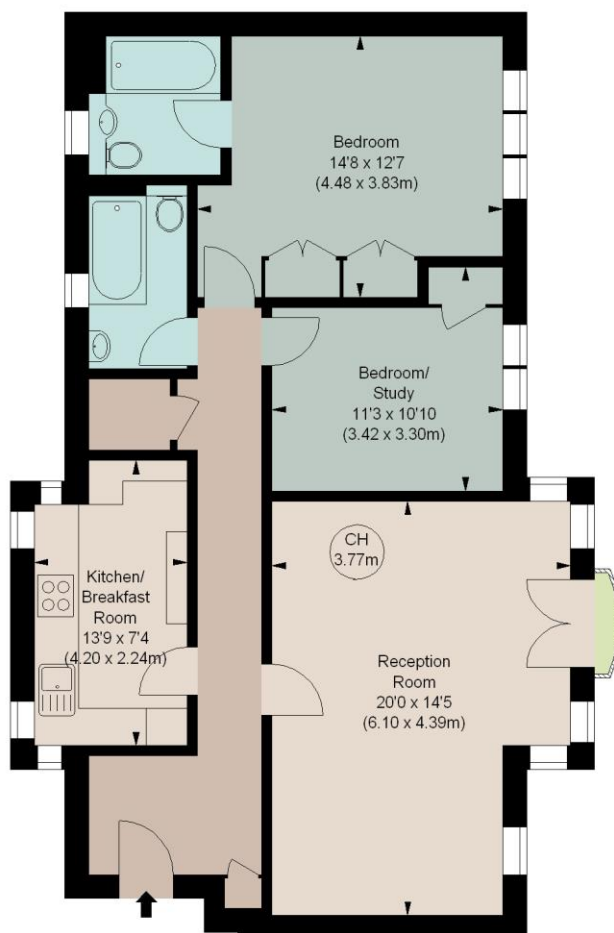
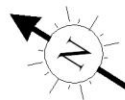




KING HENRY'S REACH, W6

Approximate gross internal area
903 sq ft / 83.9 sq m

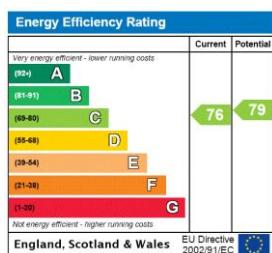
Key :
CH - Ceiling Height



SECOND FLOOR

The floor plan is not to scale and measurements and areas shown are approximate and therefore should be used for illustrative purposes only. The plan has been prepared in accordance with the RICS code of Measuring Practice and whilst we have confidence in the information produced, it must not be relied on. If there is any aspect of particular importance, you should carry out or commission your own inspection of the property. Copyright of FeaturePRO.

This floorplan is for illustration purposes only and is not to scale. The position and size of doors, windows, appliances and other features are approximate.



Winkworth

Fulham & Parsons Green | 020 7731 3388 | fulham@winkworth.co.uk

for every step...

winkworth.co.uk

Winkworth wishes to inform prospective buyers and tenants that these particulars are a guide and act as information only. All our details are given in good faith and believed to be correct at the time of printing but they don't form part of an offer or contract. No Winkworth employee has authority to make or give any representation or warranty in relation to this property. All fixtures and fittings, whether fitted or not are deemed removable by the vendor unless stated otherwise and room sizes are measured between internal wall surfaces, including furnishings.