



MAYFIELD GARDENS, LONDON, W7
£650,000 FREEHOLD

A WELL PRESENTED THREE BEDROOM SEMI-DETACHED HOUSE WITH OFF STREET PARKING AND LARGE GARDEN

Ealing & Acton | 0208 896 0123 | ealing@winkworth.co.uk

Winkworth

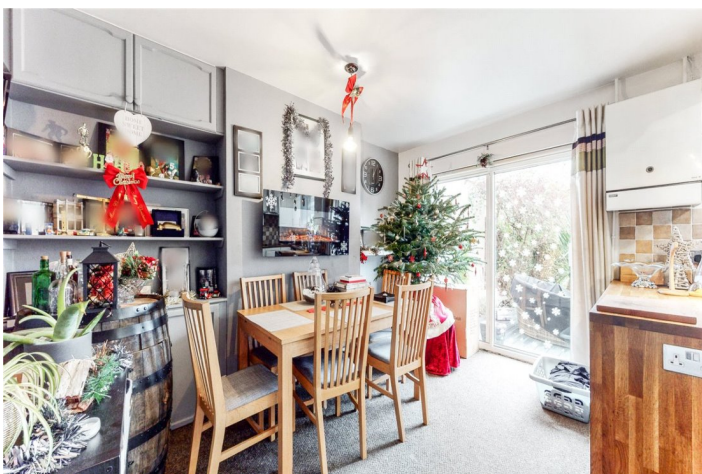
for every step...

winkworth.co.uk



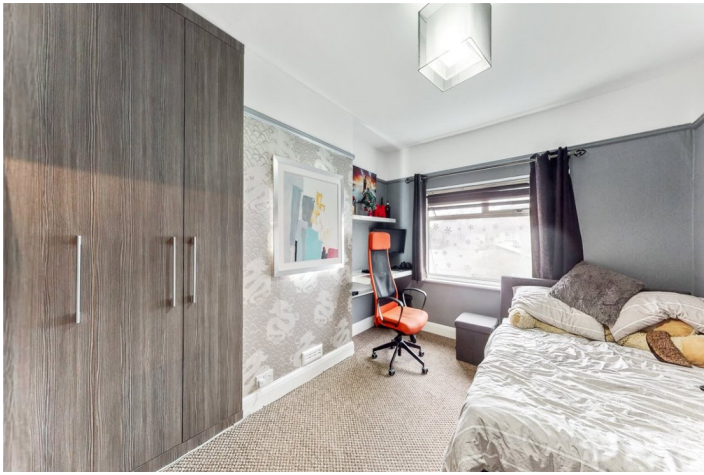
DESCRIPTION:

The property is in great condition throughout, on the ground floor there is a reception room to the front, and a modern kitchen/dining room overlooking the garden to the rear. Upstairs there are three bedrooms and a family bathroom. There is also lots of potential to extend to the rear or into the loft space (STPP). The house is currently tenanted until November 2022 so would suit a rental investor or someone who could potentially not need to move in straight away.



Winkworth

for every step...

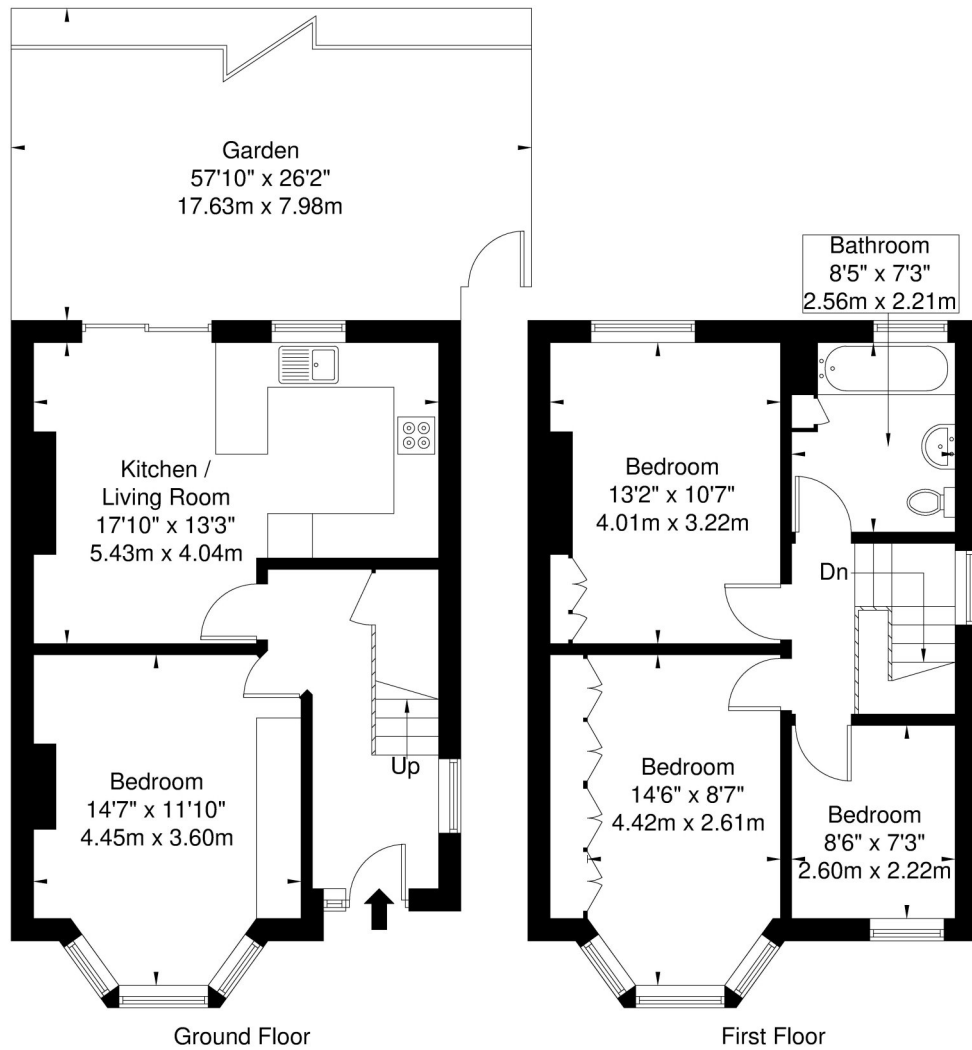


Winkworth

for every step...

Mayfield Gardens W7 3RH

Approx. Gross Internal Area = 87 sq m / 936 sq ft



Ref

Copyright

**B L E U
P L A N**

The Floor plan is not to scale and measurements and areas shown are approximate and therefore should be used for illustrative purposes only. The plan has been prepared in accordance with the RICS code of Measuring Practice and whilst we have confidence in the information produced it must not be relied on. If there is any aspect of particular importance, you should carry out or commission your own inspection of the property.

Copyright @ BLEUPLAN

This floorplan is for illustration purposes only and is not to scale. The position and size of doors, windows, appliances and other features are approximate.

Ealing & Acton | 0208 896 0123 | ealing@winkworth.co.uk

Winkworth

for every step...

winkworth.co.uk

Winkworth wishes to inform prospective buyers and tenants that these particulars are a guide and act as information only. All our details are given in good faith and believed to be correct at the time of printing but they don't form part of an offer or contract. No Winkworth employee has authority to make or give any representation or warranty in relation to this property. All fixtures and fittings, whether fitted or not are deemed removable by the vendor unless stated otherwise and room sizes are measured between internal wall surfaces, including furnishings.