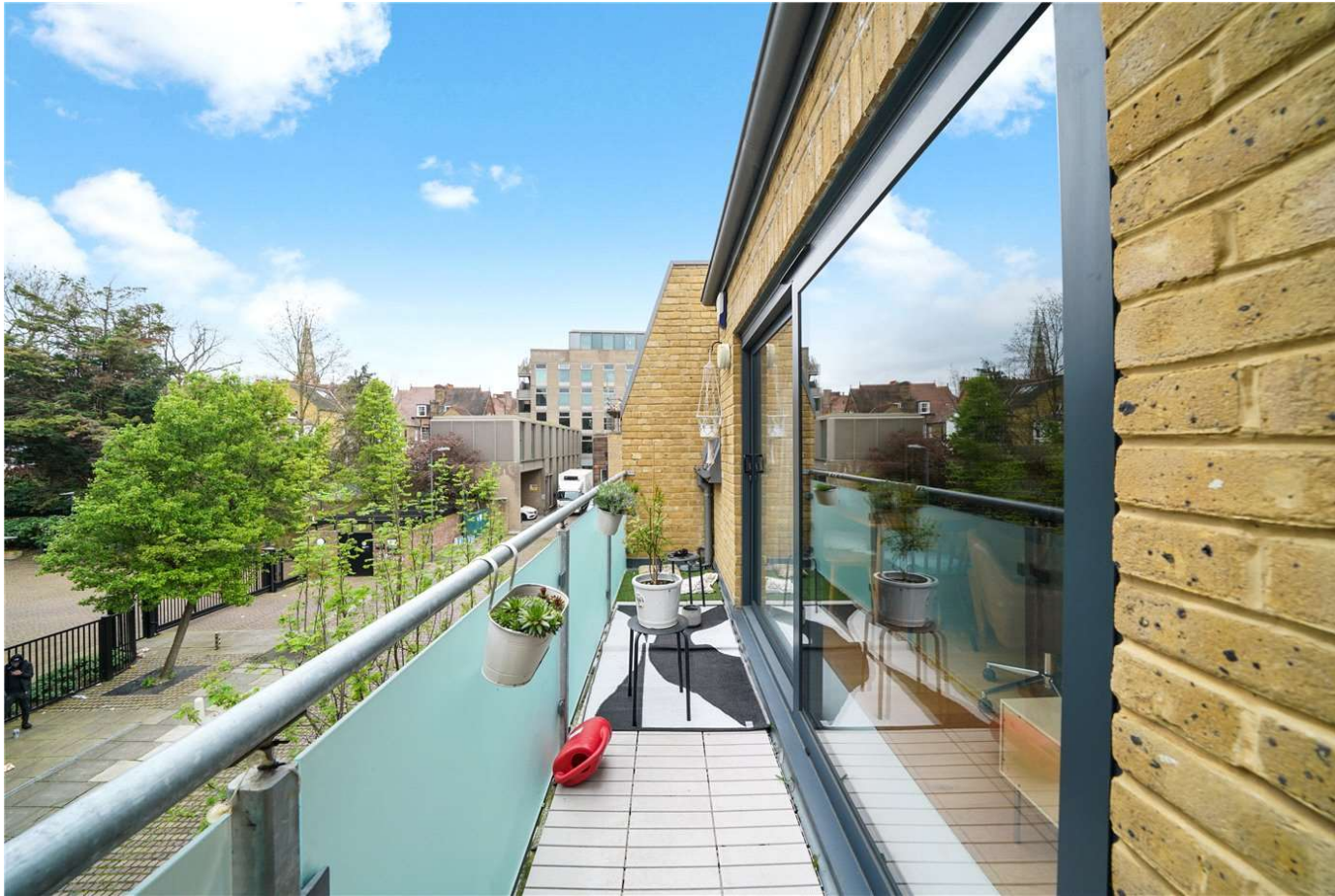




**WORPLE ROAD MEWS, SW19**  
**£2,450 PER MONTH UNFURNISHED**

**Winkworth**





## WORPLE ROAD MEWS, SW19

**This stunning two-bedroom apartment which comprises of a large, bright open plan kitchen and living room, double bedroom with ensuite, a further double bedroom, modern main bathroom and a private balcony.**

The property is in immaculate condition, has wooden floors throughout benefits from ample built in storage and built in double wardrobes in both bedrooms.

The property is in a fantastic location in the centre of Wimbledon amongst a wide range of shops, bars and restaurants and also close to Wimbledon Village. Wimbledon Station is in close proximity to the property offering brilliant links into Central London.

Deposit £2,826.92 (5 weeks) based on marketing rent of £2,450.00 per month. If a higher rent is agreed, then the deposit will be increased proportionately.

EPC Rating B

Council Tax Band D





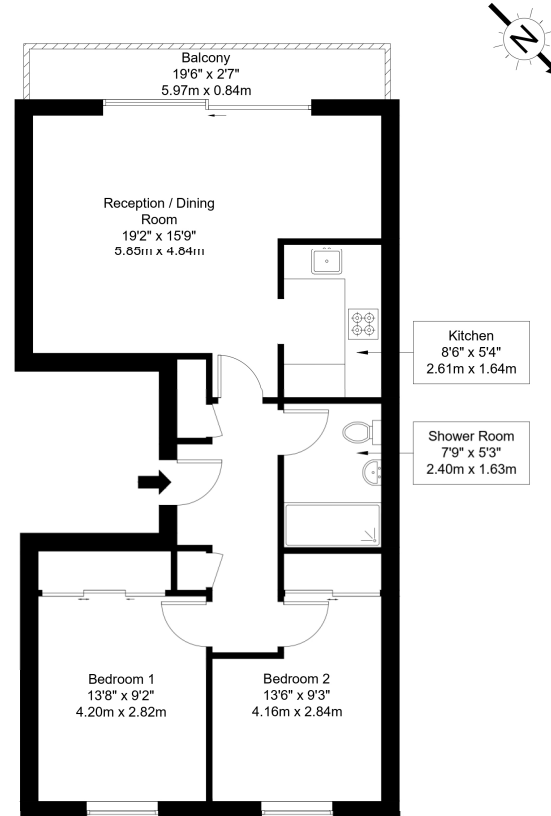


# Worple Road Mews, SW19 4DB

Approx Gross Internal Area = 58.93 sq m / 634 sq ft

Balcony = 5.01 sq m / 54 sq ft

Total = 63.94 sq m / 688 sq ft



Second Floor

Ref :

Copyright **BLEUPLAN**

The Floor plan is not to scale and measurements and areas shown are approximate and therefore should be used for illustrative purposes only. The plan has been prepared in accordance with the RICS code of Measuring Practice and whilst we have confidence in the information produced it must not be relied on. Maximum lengths and widths are represented on the floor plan. If there is any aspect of particular importance, you should carry out or commission your own inspection of the property.  
Copyright @ BLEUPLAN

Energy Efficiency Rating		Current	Potential
Very energy efficient - lower running costs			
(92-)	<b>A</b>		
(81-91)	<b>B</b>		
(69-80)	<b>C</b>	82	82
(55-68)	<b>D</b>		
(39-54)	<b>E</b>		
(21-38)	<b>F</b>		
(1-20)	<b>G</b>		
Not energy efficient - higher running costs			
England, Scotland & Wales		EU Directive 2002/91/EC	

Wimbledon | 02037614040 | wimbledon@winkworth.co.uk

winkworth.co.uk

Winkworth wishes to inform prospective buyers and tenants that these particulars are a guide and act as information only. All our details are given in good faith and believed to be correct at the time of printing but they don't form part of an offer or contract. No Winkworth employee has authority to make or give any representation or warranty in relation to this property. All fixtures and fittings, whether fitted or not are deemed removable by the vendor unless stated otherwise and room sizes are measured between internal wall surfaces, including furnishings.

