



PARAGON, SOMERSET, BA1  
**£275,000 TO BE CONFIRMED**

Winkworth



## PARAGON, BATH, BA1

**Central location | recently refurbished | superb panoramic views | 1 bedroom | first floor.**

A first floor Georgian apartment on the paragon, within walking distance of central Bath (0.2 miles, 1 minute).

Panoramic views over Bath. Recently redecorated communal area. Opposite Hedgemoor Park.

Entrance hall | living room | separate kitchen | bedroom | shower room | residents parking.

Hedgemoor Park is a quintessential Victorian park with 2 hectares / 5 acres of green space. Lots of mature trees, shrubs and grass.

The apartment is bright and light, with period features including high ceilings, sash windows and cornicing.

### SERVICES

SERVICE CHARGE:

CURO

COUNCIL TAX

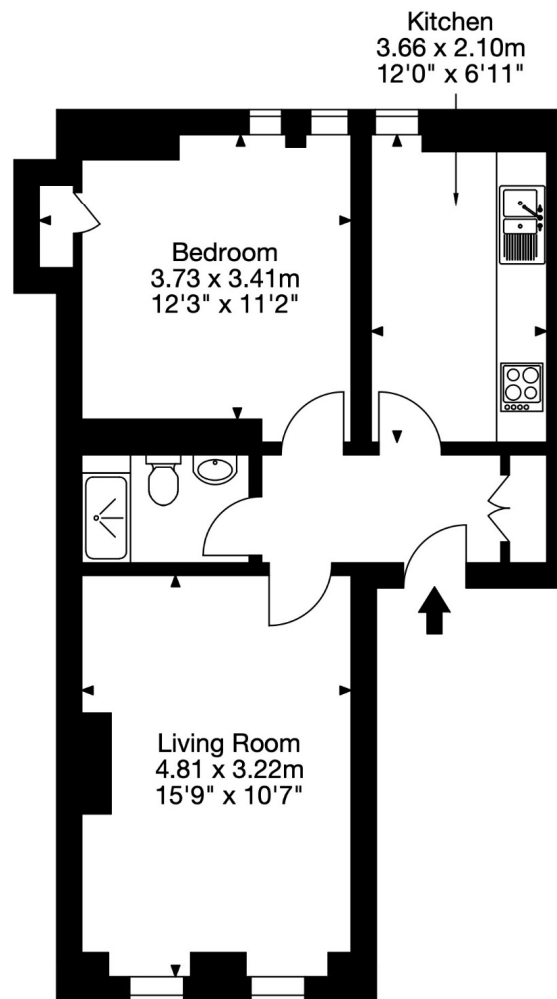
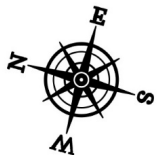
MAINS GAS, ELECTRICITY, WATER AND





33 Paragon,  
Bath BA1 5LY

Approx. Gross Internal Area  
484 Sq Ft - 45 Sq M



First Floor

Capture Property Marketing 2020. Drawn to RICS guidelines.  
All Measurements are approximate and should not be relied on as a statement of fact.  
Plan is for illustration purposes only. Not drawn to scale. Capture.

Bath | 01225 829 000 | bath@winkworth.co.uk

winkworth.co.uk

Winkworth wishes to inform prospective buyers and tenants that these particulars are a guide and act as information only. All our details are given in good faith and believed to be correct at the time of printing but they don't form part of an offer or contract. No Winkworth employee has authority to make or give any representation or warranty in relation to this property. All fixtures and fittings, whether fitted or not are deemed removable by the vendor unless stated otherwise and room sizes are measured between internal wall surfaces, including furnishings.

