



NIGHTINGALE WAY, READING, BERKSHIRE, RG30 1FB
£1,300 PER MONTH UNFURNISHED

**MODERN ONE BEDROOM APARTMENT
LOCATED CLOSE TO READING TOWN CENTRE.
AVAILABLE 14th JUNE.**

Reading | 0118 4022 300 | reading@winkworth.co.uk

Winkworth

for every step...

winkworth.co.uk



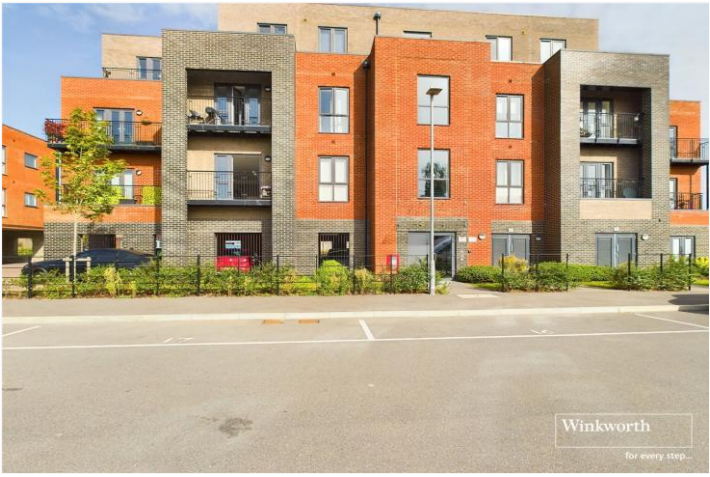
DESCRIPTION:

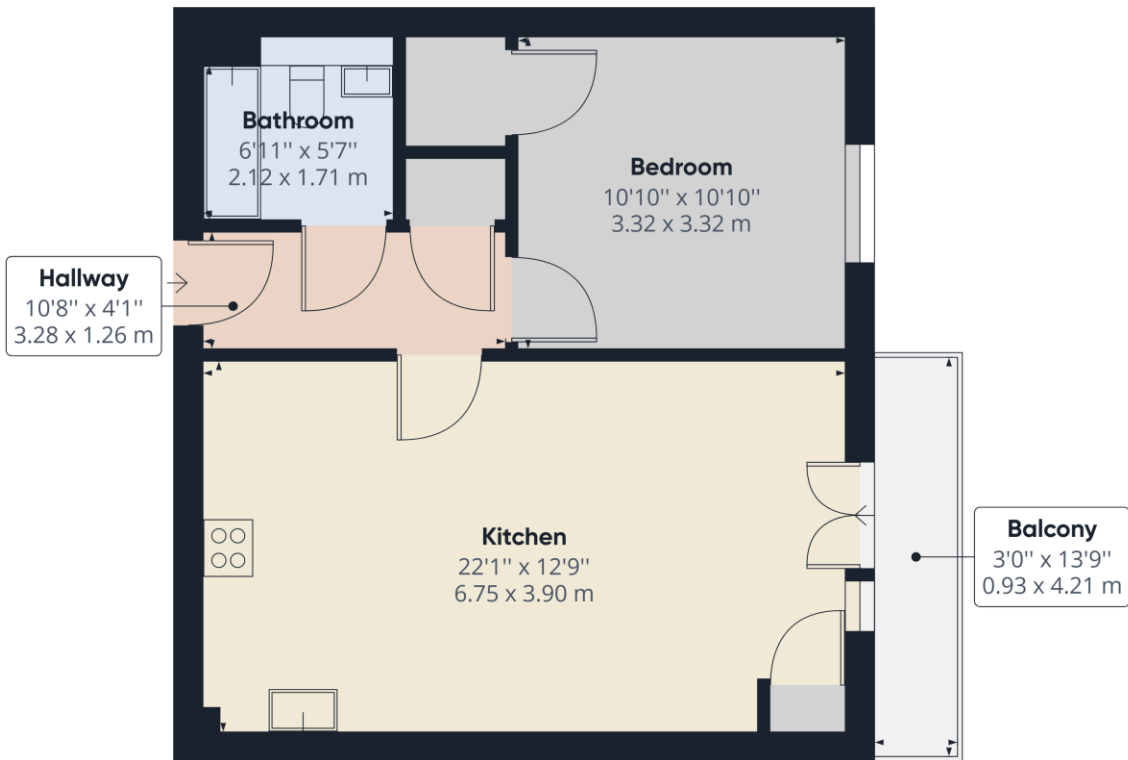
Modern first floor one bedroom apartment located within the Renaissance development just off of Portman Road and within easy reach of Reading town centre. The property comprises open plan living room/kitchen with integrated appliances, one double bedroom and a modern three piece bathroom. Further benefits include balcony and an allocated off road parking space with an electric charge point. Available 14th June 2025. Unfurnished.

AT A GLANCE

- One bedroom apartment
- First floor
- Balcony
- Off road allocated parking space
- Council tax band B
- Available 14th June
- Unfurnished







Approximate total area⁽¹⁾
522.61 ft²
48.55 m²

(1) Excluding balconies and terraces

While every attempt has been made to ensure accuracy, all measurements are approximate, not to scale. This floor plan is for illustrative purposes only.

GIRAFFE 360

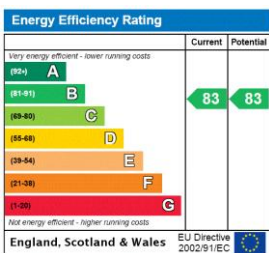
This floorplan is for illustration purposes only and is not to scale. The position and size of doors, windows, appliances and other features are approximate.

Deposit: £1,500.00

Holding Deposit: £300.00

Council Tax Band: B

Where no figures are shown, we have been unable to ascertain the information. All figures that are shown were correct at the time of printing.



Reading | 0118 4022 300 | reading@winkworth.co.uk

Winkworth

for every step...

winkworth.co.uk

Winkworth wishes to inform prospective buyers and tenants that these particulars are a guide and act as information only. All our details are given in good faith and believed to be correct at the time of printing but they don't form part of an offer or contract. No Winkworth employee has authority to make or give any representation or warranty in relation to this property. All fixtures and fittings, whether fitted or not are deemed removable by the vendor unless stated otherwise and room sizes are measured between internal wall surfaces, including furnishings.