

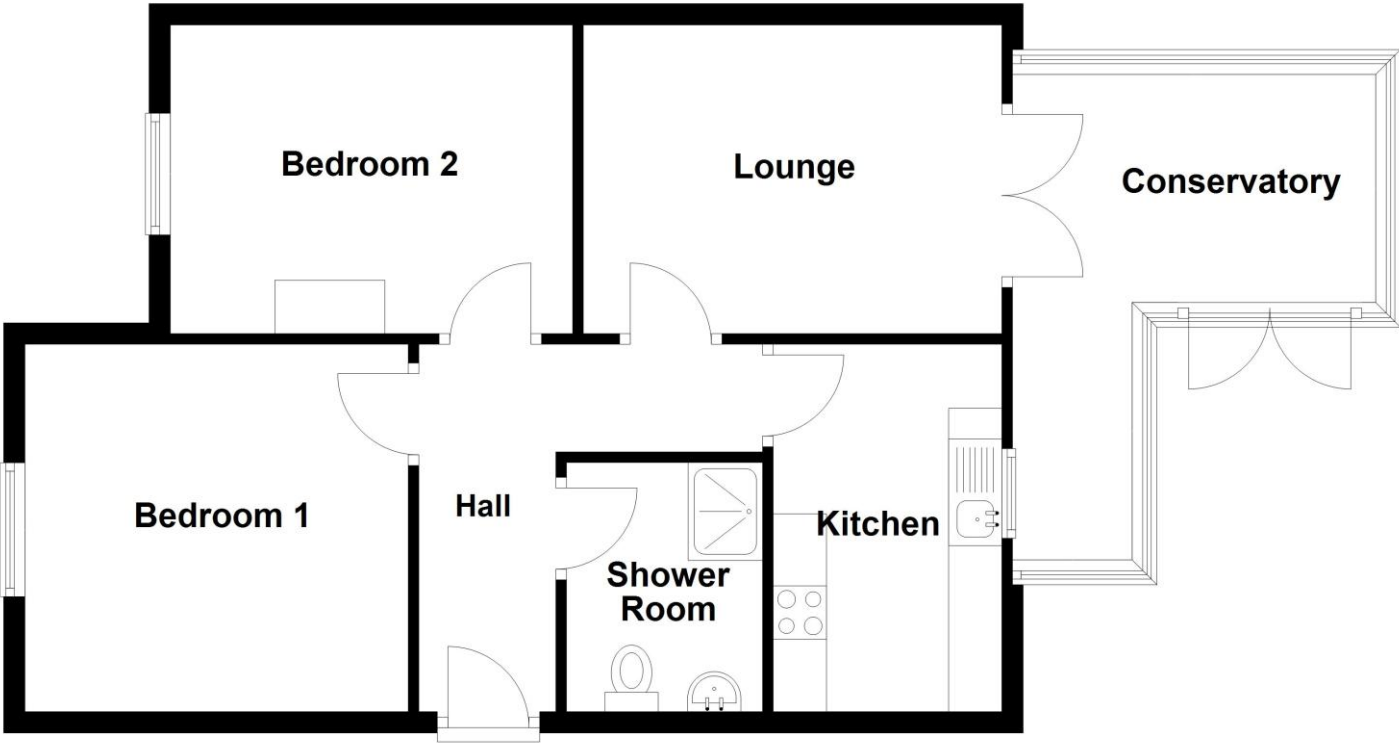
Hawthorn Close, Ruskington, Sleaford

This floorplan is for illustration purposes only and is not to scale. The position and size of doors, windows, appliances and other features are approximate.

Score	Energy rating	Current	Potential
92+	A		
81-91	B		86 B
69-80	C	69 C	
55-68	D		
39-54	E		
21-38	F		
1-20	G		

Ground Floor

Approx. 65.5 sq. metres (705.3 sq. feet)



Total area: approx. 65.5 sq. metres (705.3 sq. feet)



6 Hawthorn Close, Ruskington, Sleaford, NG34 9BX

£155,000 Freehold

This well-presented two-bedroom semi-detached bungalow is located in the popular village of Ruskington, just a short walk from local shops and amenities.

Well-presented Throughout | Two Double Bedrooms | Located in Popular Village | Close to Amenities | Spacious lounge leading to conservatory | Modern shower room | Enclosed rear garden | Detached Garage



Inside, the accommodation includes a welcoming entrance hall with loft access, a bright and comfortable lounge with patio doors opening into a spacious conservatory, and a modern kitchen fitted with a range of units, an integrated oven and hob, and space for appliances. There are two generous double bedrooms, both with ample space for furnishings, and a contemporary shower room with a walk-in cubicle, wash basin, WC, and heated towel rail.

Outside, the property benefits from an enclosed rear garden with a paved seating area, perfect for relaxing or entertaining. To the front, there is access to a single garage with power and lighting, along with off-road parking.

ACCOMMODATION

Entrance Hall

Lounge - 12'11" x 9'7" (3.94m x 2.92m)

Kitchen - 11'3" x 7'1" (3.43m x 2.16m)

Conservatory - 14'11" x 11'2" (4.55m x 3.4m)

Bedroom 1 - 11'10" x 11'4" (3.6m x 3.45m)



Shower Room

Bedroom 2 - 12'5" x 9'6" (3.78m x 2.9m)

LOCAL AUTHORITY

North Kesteven District Council

TENURE

Freehold

COUNCIL TAX BAND

B

SERVICE CHARGE

£0

GROUND RENT

£0

DIRECTIONS