



Ground Floor Flat, Askew Crescent, London, W12

£425,000 Share of Freehold

A bright and beautifully presented one-bedroom raised ground floor flat located in the heart of Askew Village.

Reception Room | Kitchen | Bedroom | Bathroom | 418 Sq Ft / 39 Sq M | Council Tax Band C | EPC Rating Band C

Winkworth

winkworth.co.uk

for every step...



LOCATION

Askew Crescent runs just off Askew Road, where numerous restaurants, pubs and coffee shops can be found, as well as an array of shops such as The Ginger Pig, Askew Wine and Gail's Bakery. Shepherd's Bush offers not only Westfield London shopping centre, but also an abundance of independent bars, restaurants and an internationally famous music venue, as well as outstanding transport links.

DESCRIPTION

Presented to the market in excellent condition is this stunning one-bedroom raised ground floor flat located in the heart of the sought-after Askew Village.

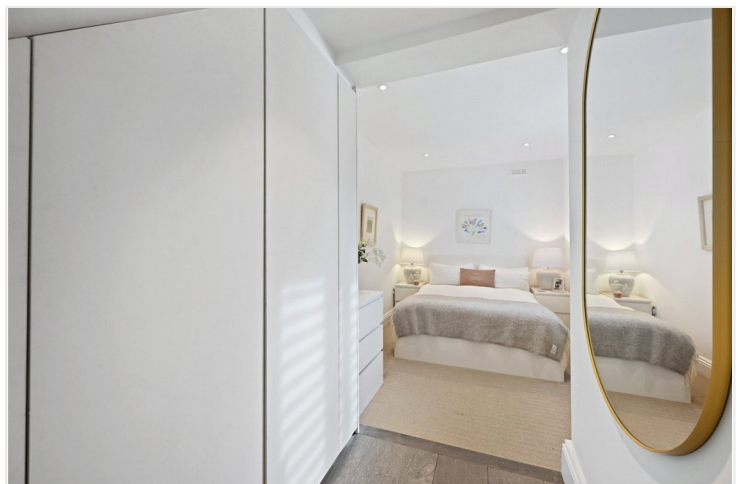
The flat comprises a bright and spacious reception room with bay window and high ceilings, separate kitchen, family bathroom and a double bedroom complete with ample built in storage.

The property also benefits from a share of freehold.

Share of Freehold with an underlying lease of 159 years from 24 June 1982

Service Charge: paid ad hoc

Ground Rent: £120 p.a



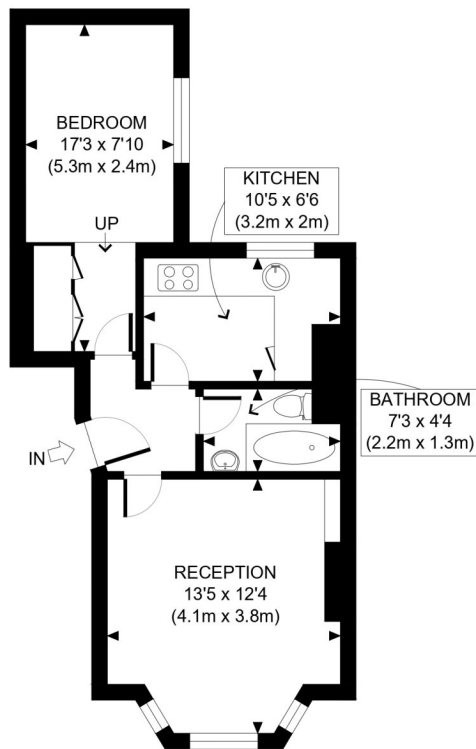


LOCAL AUTHORITY
Hammersmith & Fulham

TENURE
Share of Freehold 115 years 6 months.

PRICE: £425,000 Share of Freehold

Score	Energy rating	Current	Potential
92+	A		
81-91	B		
69-80	C	77 C	81 B
55-68	D		
39-54	E		
21-38	F		
1-20	G		



RAISED GROUND FLOOR

APPROX. GROSS INTERNAL FLOOR AREA: 430 SQ FT/ 40 SQM

Winkworth

ASKEW CRESCENT, W12

This plan is for illustrative purposes only and should be used as such by any prospective client. Whilst every attempt has been made to ensure the accuracy of the Floor Plan contained here, measurements of the doors, windows, rooms and any other items are approximate and no responsibility is taken for any errors, omissions, or misstatement. The services, systems and appliances shown have not been tested and no guarantee as to the operability or efficiency can be given.

PROPERTY PHOTO PLANS .CO.UK
ONE STOP SHOP FOR PROPERTY IMAGERY

The displayed square footage is taken from the floor plans with measurements created using the Royal Institute of Chartered Surveyors' Code of Practice for Measuring. These measurements are approximate and included for illustrative purposes only. Winkworth does not make any representation as to the accuracy of these measurements and you should seek to verify them for yourself. Winkworth accept no liability for any loss you may suffer if you rely on these measurements.

Shepherds Bush | 020 8735 3266 | shepherdsbush@winkworth.co.uk

Winkworth

for every step...

Under the Property Misdescriptions Act 1991, these Particulars are a guide and act as information only. All details are given in good faith and are believed to be correct at time of printing. Winkworth give no representation as to their accuracy and potential purchasers or tenants must satisfy themselves by inspection or otherwise as to their correctness. No employee of Winkworth has authority to make or give any representation or warranty in relation to this property.