



Lionel Mansions, Haarlem Road, W14

£800,000 Leasehold

A smart two bedroom flat on the ground floor of a red brick mansion building, with direct access to a large communal garden.

Reception Room | Kitchen | 2 Bedrooms | Bathroom | Communal Gardens | 849 Sq Ft / 79 Sq M | Council Tax Band E | EPC Rating Band C

Winkworth

winkworth.co.uk

for every step...



LOCATION

Lionel Mansions is situated on Haarlem Road, a quiet residential street just north of Brook Green. The location is ideal for the area's numerous pubs, restaurants and shops, with a more comprehensive selection available in both Hammersmith and at Westfield London. Excellent transport links are on hand in Hammersmith, Shepherd's Bush and Kensington Olympia.

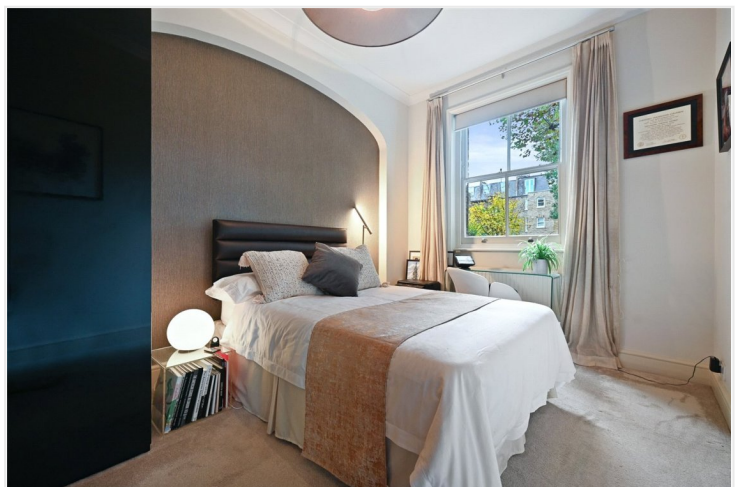
DESCRIPTION

Well presented throughout in a modern, contemporary style, the property offers well proportioned accommodation which comprises entrance hall, reception room, two double bedrooms, bathroom and kitchen, which in turn leads directly out to the large communal garden.

Lease:- 140 years ish

SC:- £106 pcm

GR:- £100 per year

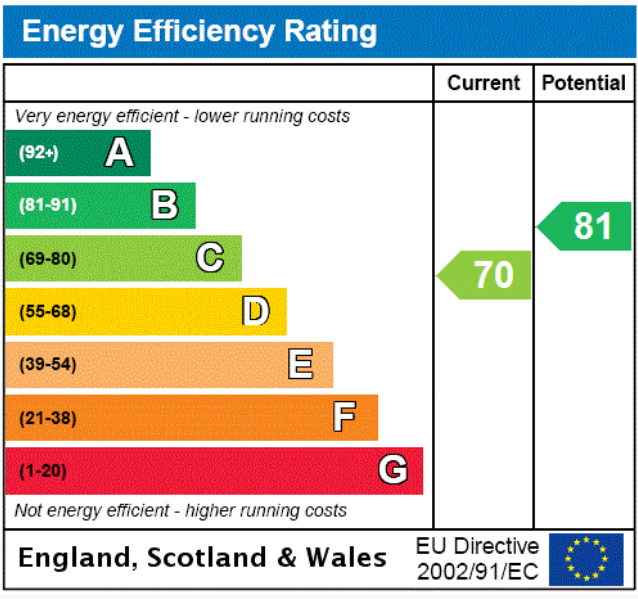


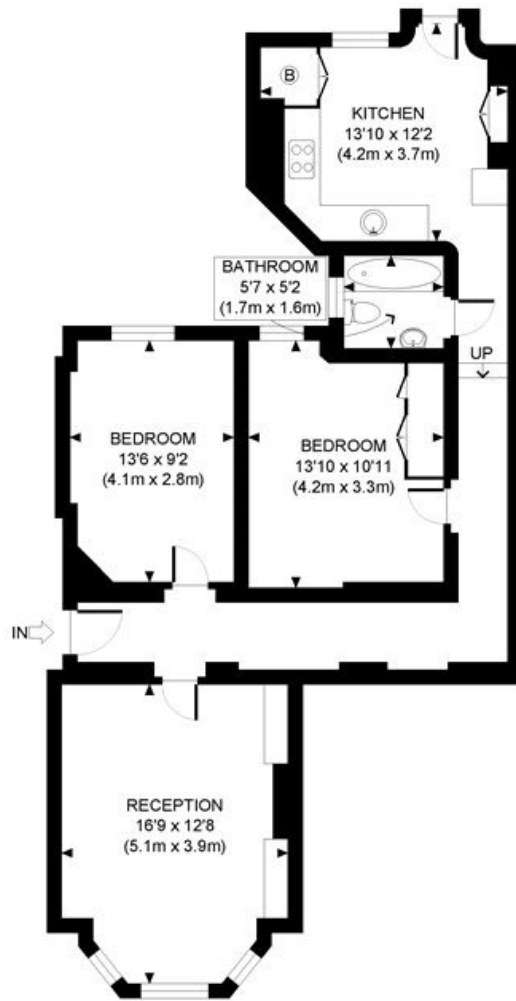


LOCAL AUTHORITY
Hammersmith & Fulham

TENURE
Leasehold.

PRICE: £800,000 Leasehold





GROUND FLOOR
GROSS INTERNAL
FLOOR AREA 849 SQ FT

APPROX. GROSS INTERNAL FLOOR AREA: 849 SQ FT/ 79 SQM

Winkworth

This plan is for illustrative purposes only and should be used as such by any prospective client. Whilst every attempt has been made to ensure the accuracy of the Floor Plan contained here, measurements of the doors, windows, rooms and any other items are approximate and no responsibility is taken for any errors, omissions, or misstatement. The services, systems and appliances shown have not been tested and no guarantee as to the operability or efficiency can be given.

PROPERTY PHOTO PLANS
THE WAY TO THE PROPERTY YOU WANT

The displayed square footage is taken from the floor plans with measurements created using the Royal Institute of Chartered Surveyors' Code of Practice for Measuring. These measurements are approximate and included for illustrative purposes only. Winkworth does not make any representation as to the accuracy of these measurements and you should seek to verify them for yourself. Winkworth accept no liability for any loss you may suffer if you rely on these measurements.

Hammersmith | 0207 371 4466 | hammersmith@winkworth.co.uk

Winkworth

for every step...

Under the Property Misdescriptions Act 1991, these Particulars are a guide and act as information only. All details are given in good faith and are believed to be correct at time of printing. Winkworth give no representation as to their accuracy and potential purchasers or tenants must satisfy themselves by inspection or otherwise as to their correctness. No employee of Winkworth has authority to make or give any representation or warranty in relation to this property.