



HARTFORDE ROAD, HERTFORDSHIRE, WD6
£580,000 FREEHOLD

**AN IMMACULATELY PRESENTED THREE
BEDROOM, TWO RECEPTION SEMI DETACHED
FAMILY HOUSE.**

Borehamwood | 020 8953 8899 | borehamwood@winkworth.co.uk



DESCRIPTION:

Located Close to several "Good" Ofsted rated schools and within walking distance of Meadow Park and local bus routes this three bedroom, two reception house makes an ideal family home.

At circa 1000 square feet the accommodation is bright, spacious and well proportioned and should the need arise there is substantial scope to extend, subject to the usual planning consents.

Externally there is a large mature Southerly rear garden and off street parking to the front for several cars.

AT A GLANCE

- 3 Bedrooms
- Two Receptions
- 979 Square Feet
- Extensive Scope to Extend (Stpp)
- Ample Off Street Parking
- Close To "Good" Ofsted Rated Schools
- Large Southerly Rear Garden
- Brick Built Shed/Workshop





Winkworth



Winkworth



Winkworth



Winkworth



Winkworth

Approximate Gross Internal Area = 91.0 sq m / 979 sq ft
 Brick Shed = 8.8 sq m / 95 sq ft
 Total = 99.8 sq m / 1074 sq ft

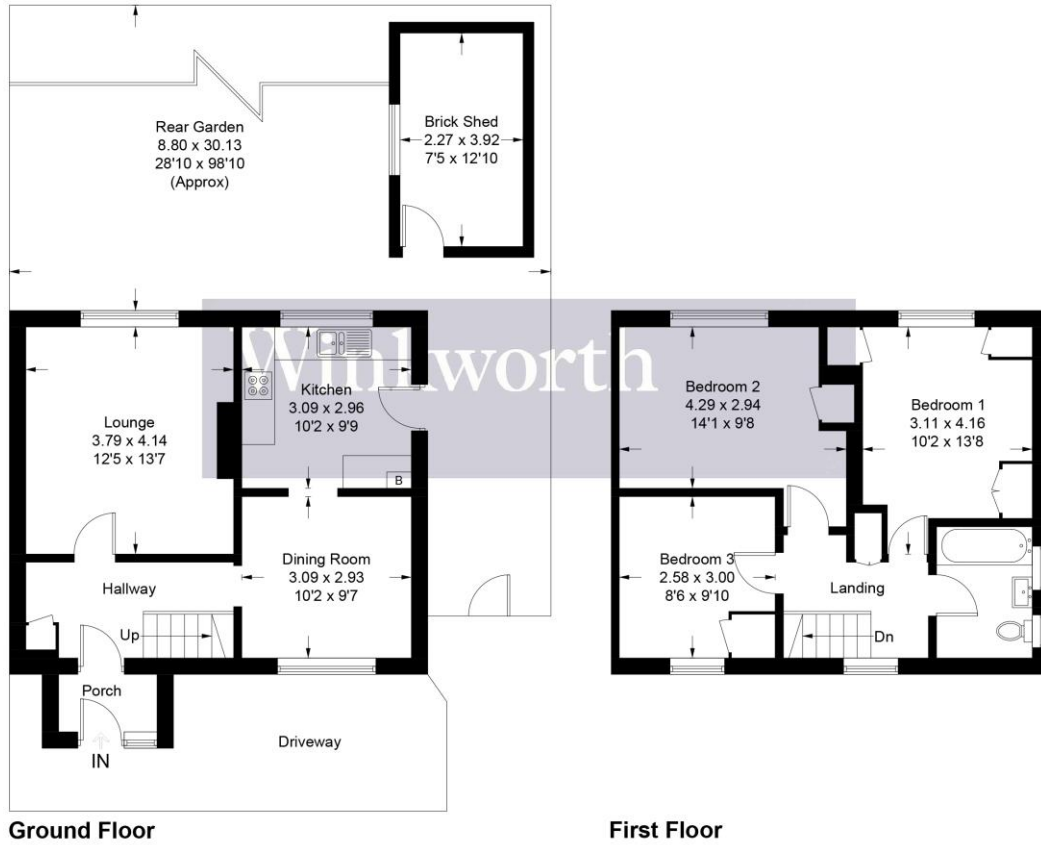


Illustration for identification purposes only, measurements are approximate, not to scale. Winkworth © 2023 (ID932858)

This floorplan is for illustration purposes only and is not to scale. The position and size of doors, windows, appliances and other features are approximate.

