



**NETHER STREET, FINCHLEY, LONDON, N3**  
**£700,000 SHARE OF FREEHOLD**

## A BEAUTIFUL THREE BEDROOM TWO BATHROOM DUPLEX MAISONETTE

Finchley | 020 8349 3388 | [finchley@winkworth.co.uk](mailto:finchley@winkworth.co.uk)



Winkworth

## DESCRIPTION:

A beautiful duplex maisonette set in a prime N3 location, ideal for local amenities, recreational parkland, Outstanding Ofsted Rated Primary Schools and a short walk to both West Finchley and Finchley underground stations. The property has a fantastic blend of period features whilst having been modernised to a very high standard with over 1500 sq.ft of living space and comprises living/dining room, modern fitted kitchen, three double bedrooms, two fitted bathrooms and a lovely roof terrace. Further benefits include a garage and share of freehold. An internal viewing of this truly unique property is highly recommended!

## COUNCIL TAX:

Band E - £2078.98 per annum

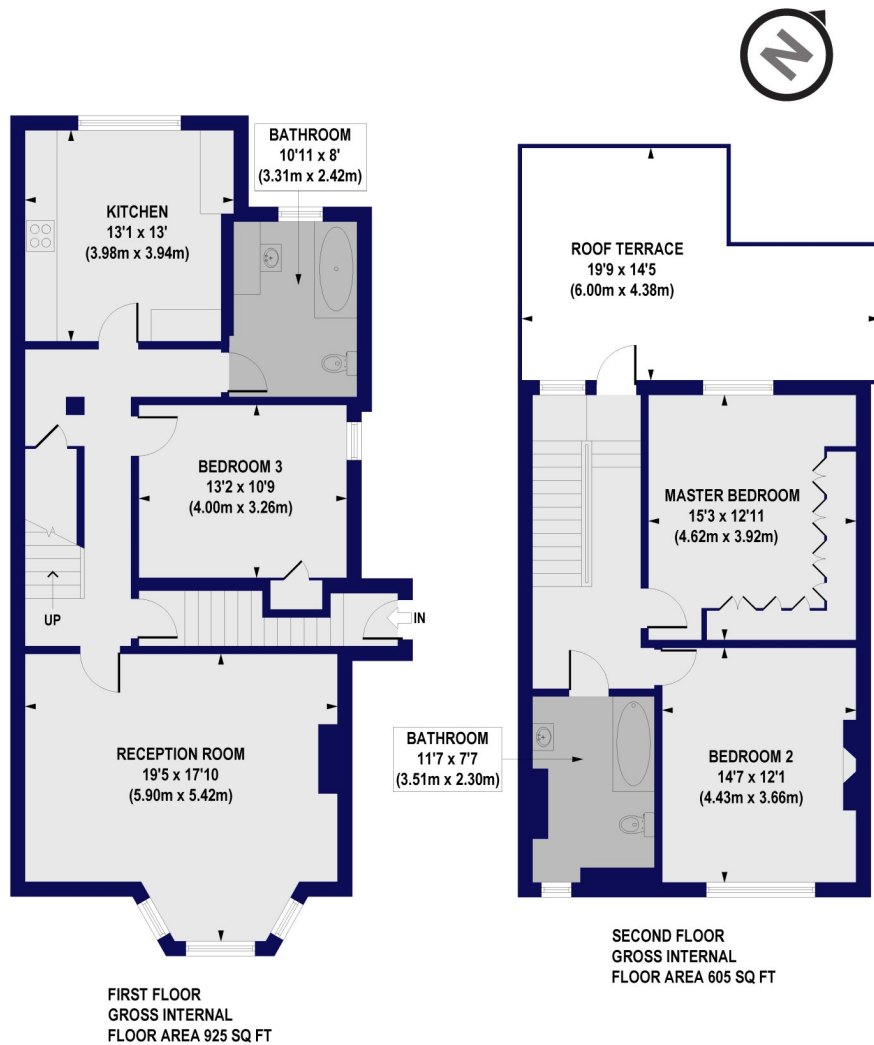
## AT A GLANCE

- Period Style Duplex Maisonette
- Over 1500 sq.ft of living space
- Spacious living/dining room
- Modern fitted kitchen
- Two Bathrooms
- Three double bedrooms
- Private roof terrace
- Garage
- Share of freehold





**Nether Street, N3**  
**Approx. Gross Internal Floor Area 1530 sq. ft / 142.15 sq. m**



All measurements of walls, doors, windows, fittings and appliances, including their size and location, are shown as standard sizes and do not constitute any warranty or representation by the seller, their agent or CP Creative. Any intending purchaser must satisfy himself by inspection or otherwise as to the correctness of the information contained in these plans. This plan is for illustrative purposes only and should be used as such by any prospective purchasers.

**Winkworth**

