



BELLVILLE HOUSE, GREENWICH, LONDON, SE10
£550,000 LEASEHOLD

A BEAUTIFULLY PRESENTED AND LARGE THREE BEDROOM APARTMENT, THAT MEASURES AN IMPRESSIVE 931 SQ FT. FEATURING A SECURE PARKING SPACE AND PERFECTLY LOCATED IN WEST GREENWICH, JUST MOMENTS FROM MAINLINE RAIL. EWS1 COMPLIANT!

Greenwich | 02030533033 | greenwich@winkworth.co.uk

Winkworth

for every step...

winkworth.co.uk



DESCRIPTION:

A beautifully presented and large three bedroom apartment, that measures an impressive 931 sq ft. Featuring a secure parking space and perfectly located in West Greenwich, just moments from mainline rail. EWS1 compliant!

In fantastic order throughout, the property comprises a bright 26ft reception room, with a well fitted open plan kitchen. The room then leads onto a large balcony. There are three good sized bedrooms and two bathrooms. The wide hallway also features a utility cupboard. Added benefits include a small private terrace to the front, that then opens onto a communal central courtyard. Along with secure parking, there is also a concierge service on site.

Bellville House is really well located near the corner of Norman Road and Greenwich High Road and is just moments from mainline rail and DLR. The town centre is also close by and offers a superb selection of shops and restaurants, along with Greenwich Market and The Royal Park.

AT A GLANCE

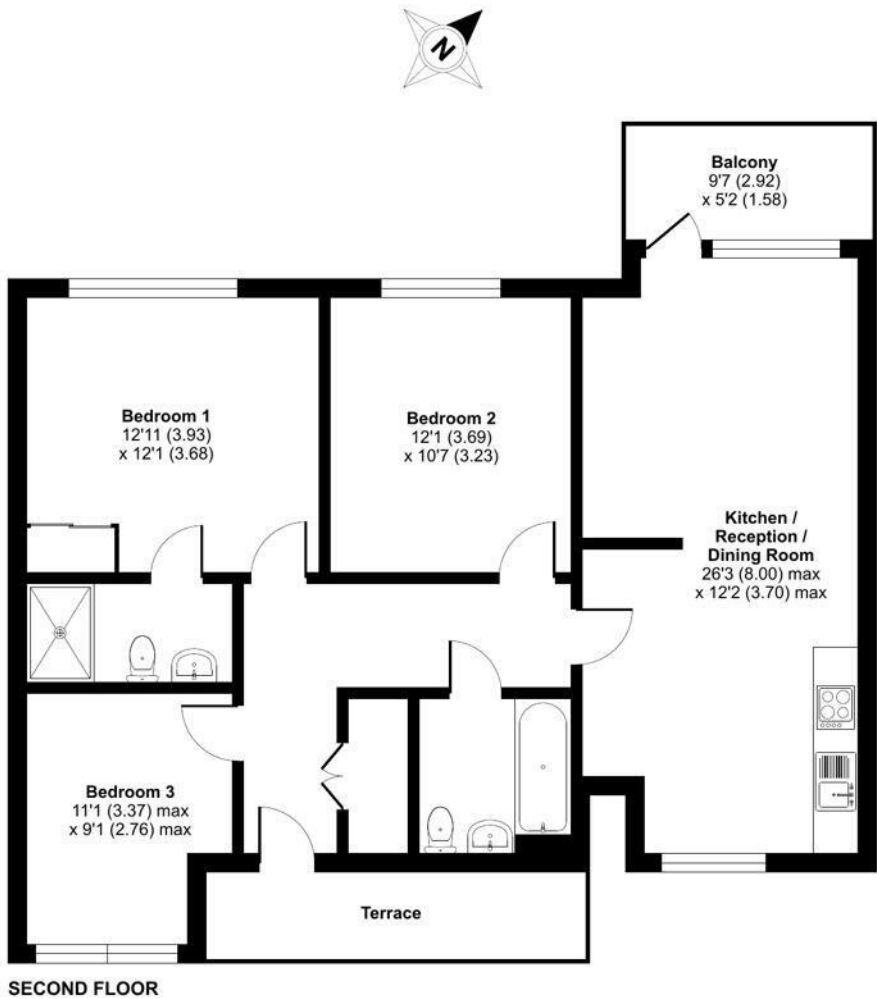
- three bedroom apartment
- 2nd floor (with lift)
- 954 sq ft
- 26ft kitchen diner
- private balcony
- secure parking
- excellent condition
- communal central terrace
- concierge service
- West Greenwich location
- moments from rail and DLR





John Donne Way, Greenwich, SE10

Approximate Area = 931 sq ft / 86.5 sq m
For identification only - Not to scale



Floor plan produced in accordance with RICS Property Measurement Standards incorporating International Property Measurement Standards (IPMS2 Residential). © nichecom 2024.

This floorplan is for illustration purposes only and is not to scale. The position and size of doors, windows, appliances and other features are approximate.

Score	Energy rating	Current	Potential
92+	A		
81-91	B	82 B	82 B
69-80	C		
55-68	D		
39-54	E		
21-38	F		
1-20	G		

Tenure: Leasehold

Term: 136 years

Service Charge: £5999 per annum

Ground Rent: £ 450 Annually (subject to increase)

Council Tax Band: D

Where no figures are shown, we have been unable to ascertain the information. All figures that are shown were correct at the time of printing.

Greenwich | 02030533033 | greenwich@winkworth.co.uk



winkworth.co.uk

Winkworth wishes to inform prospective buyers and tenants that these particulars are a guide and act as information only. All our details are given in good faith and believed to be correct at the time of printing but they don't form part of an offer or contract. No Winkworth employee has authority to make or give any representation or warranty in relation to this property. All fixtures and fittings, whether fitted or not are deemed removable by the vendor unless stated otherwise and room sizes are measured between internal wall surfaces, including furnishings.