



ELDON AVENUE, WD6

£340,000 LEASEHOLD

TWO BEDROOM GROUND FLOOR MAISONETTE WITH OWN GARDEN

Borehamwood | 020 8953 8899 | borehamwood@winkworth.co.uk



DESCRIPTION:

Located just a stone's throw from the town centre is this ground floor maisonette. The property comprises lounge, two double bedrooms, modern kitchen and bathroom. To the rear is a well kept garden with decking, flower beds and lawn. Benefits include off street parking to the front, double glazing and gas central heating.

This property is ideally located for easy access to Elstree & Borehamwood main line station giving you access into London in under half an hour.

AT A GLANCE

- 2 Bedrooms
- Off Street Parking For Several Cars
- Large South Westerly Rear Garden
- 609 Square Feet
- Convenient and Sought After Location





Winkworth



Winkworth

Approximate Gross Internal Area = 56.6 sq m / 609 sq ft
 Metal Shed / Shed = 13.1 sq m / 141 sq ft
 Total = 69.7 sq m / 750 sq ft

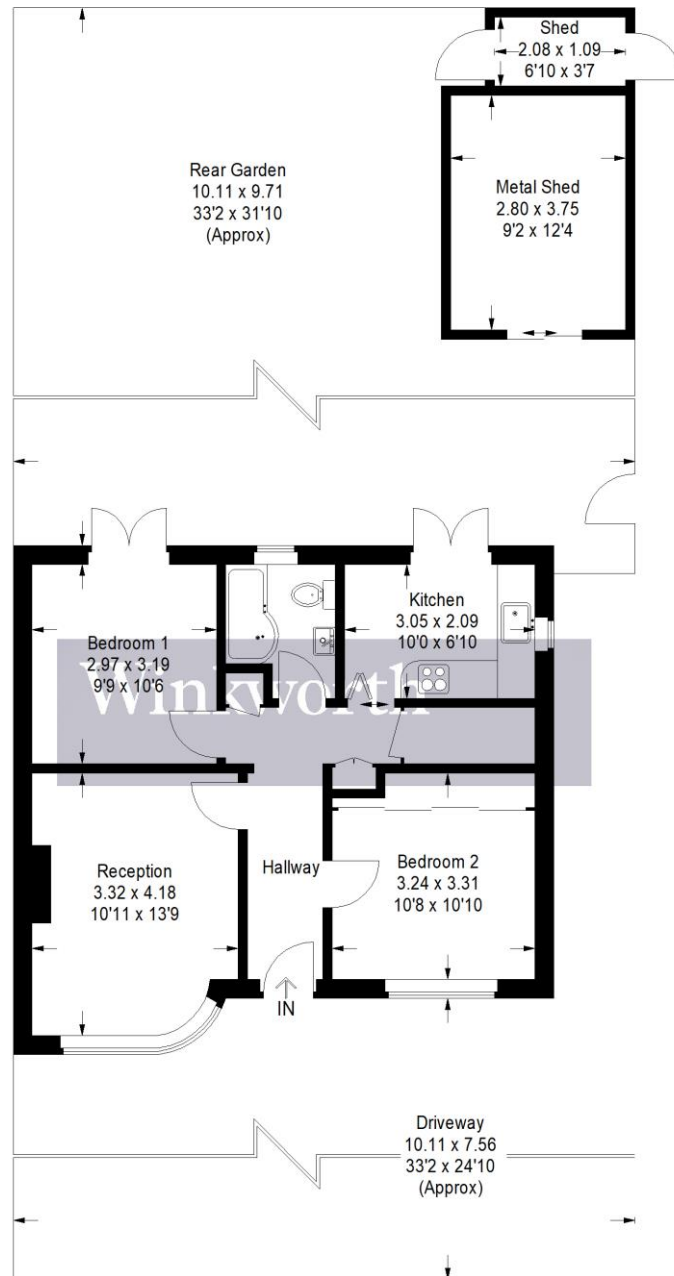


Illustration for identification purposes only, measurements are approximate, not to scale. Winkworth © 2021 (ID 813239)

This floorplan is for illustration purposes only and is not to scale. The position and size of doors, windows, appliances and other features are approximate.

