



**COTSWOLD WAY, WORCESTER PARK, KT4**

**£400,000 FREEHOLD**

**A LOVELY TWO DOUBLE BEDROOM END OF TERRACE  
PROPERTY FEATURING TWO ALLOCATED PARKING SPACES  
AND SCOPE TO EXTEND STPP**

**Winkworth**

Worcester Park Office | 020 8335 5555 | [worcesterpark@winkworth.co.uk](mailto:worcesterpark@winkworth.co.uk)

[winkworth.co.uk](http://winkworth.co.uk)

See things differently





## AT A GLANCE

- No Onward Chain
- 2 Double Bedrooms
- South-Westerly Aspect
- Rear Garden
- Living Room
- Kitchen/Breakfast Room
- Family Bathroom
- Two Allocated Parking Spaces
- Rear Access
- Council Tax Band D
- EPC Rating D

## DESCRIPTION

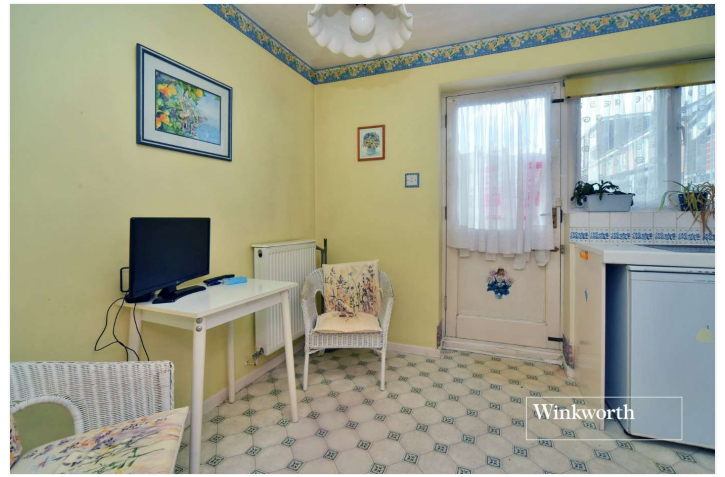
**\*\*2 PARKING SPACES\*\* SCOPE TO EXTEND STPP\*\* QUIET CUL-DE-SAC\*\*** Situated in quiet cul-de-sac, this lovely two double bedroom end of terrace property features a secluded rear garden, two allocated parking spaces and scope for extension subject to the usual planning consents.

The location is perfect for both commuters and families with Worcester Park train station offering fast and frequent services to London and local bus routes providing links to Cheam, Epsom, Kingston-upon-Thames and Morden with its Northern Line tube station. Education in the area is highly regarded and includes grammar schools in the borough. Local schools include Dorchester Primary School and St Cecilia's Primary School.

The accommodation comprises a spacious living room overlooking the front aspect, a kitchen breakfast room, two double bedrooms and the family bathroom. Externally, the South-Westerly aspect rear garden extends to approximately 35ft and is mostly laid to lawn with a patio area ideal for outside socialising. To the front, there are two allocated parking spaces.

No onward chain.





## ACCOMMODATION

**Living Room** - 15'11" x 9'4" max (4.85m x 2.84m max)

**Kitchen/Breakfast Room** - 12'8" x 8'7" max (3.86m x 2.62m max)

**Bedroom** - 12'8" x 9' max (3.86m x 2.74m max)

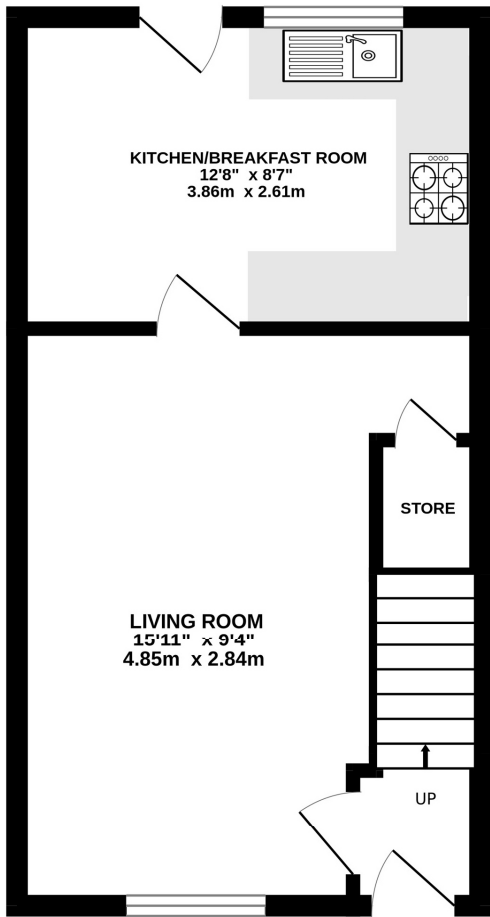
**Bedroom** - 12'8" x 8'10" max (3.86m x 2.7m max)

**Bathroom** - 6'2" x 6' max (1.88m x 1.83m max)

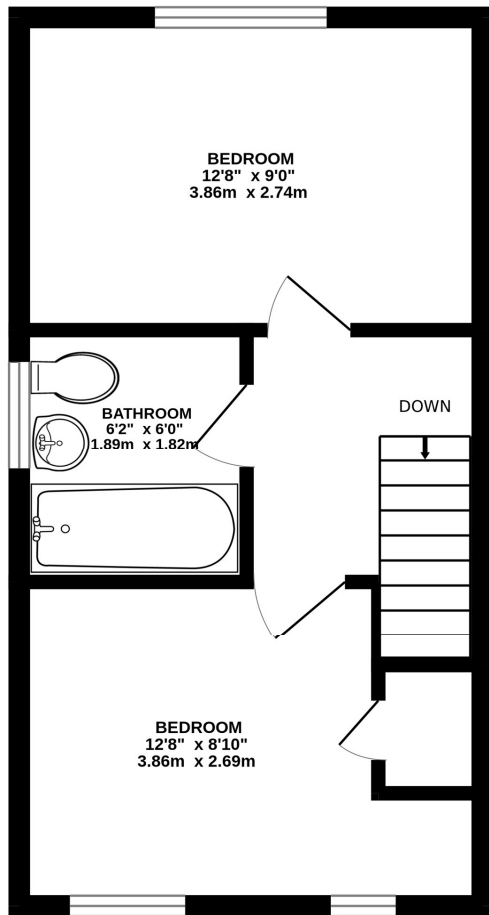
**Garden** - Approx. 35ft



Cotswold Way, Worcester Park KT4 8LN  
INTERNAL FLOOR AREA (APPROX.) 630 sq ft/ 59.3 sq m  
Garden extends to 35' (10.67m) approx.



GROUND FLOOR

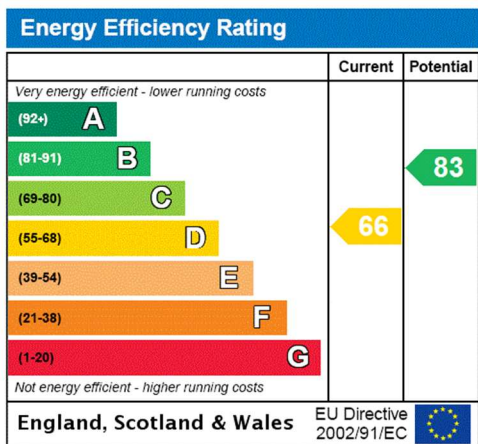


FIRST FLOOR

**Winkworth**

Whilst every attempt has been made to ensure the accuracy of this floor plan, measurement of doors, windows, rooms and any other items are approximate and no responsibility is taken for any error, omission or mis-statement. Made with Metropix © 2025.

This floorplan is for illustration purposes only and is not to scale. The position and size of doors, windows, appliances and other features are approximate.



**Winkworth**

winkworth.co.uk

See things differently

Winkworth wishes to inform prospective buyers and tenants that these particulars are a guide and act as information only. All our details are given in good faith and believed to be correct at the time of printing but they don't form part of an offer or contract. No Winkworth employee has authority to make or give any representation or warranty in relation to this property. All fixtures and fittings, whether fitted or not are deemed removable by the vendor unless stated otherwise and room sizes are measured between internal wall surfaces, including furnishings.