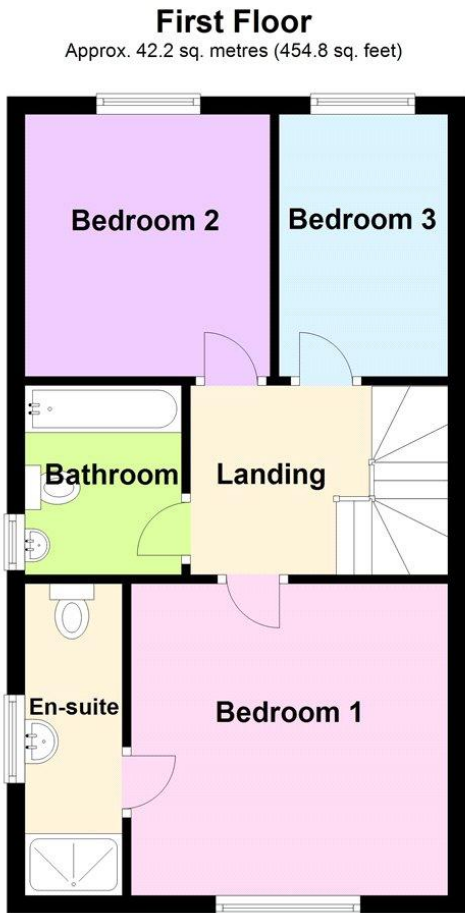
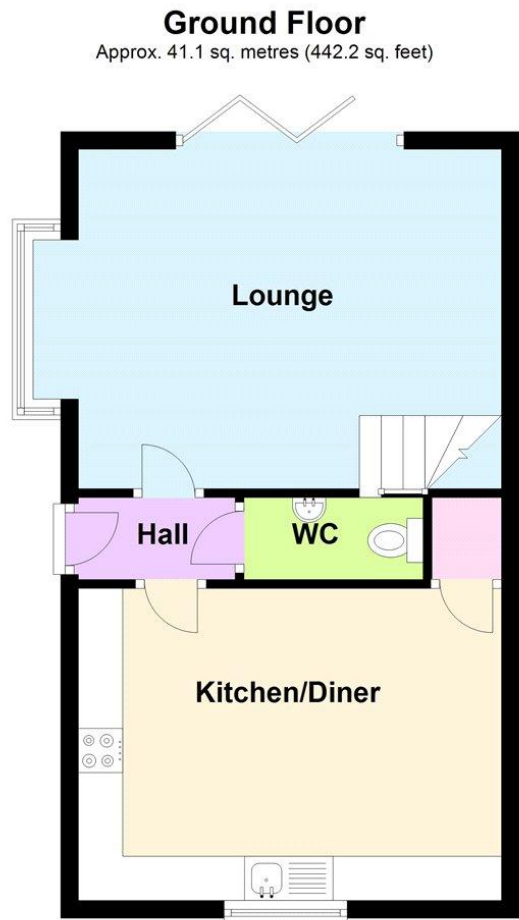
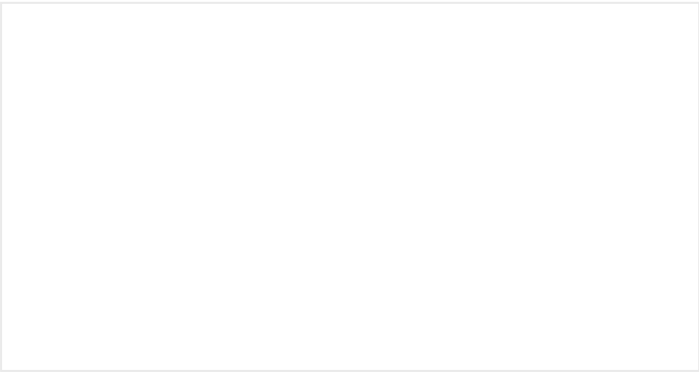


Plot 170, Flaxwell Fields, Lincoln Road, Sleaford

This floorplan is for illustration purposes only and is not to scale. The position and size of doors, windows, appliances and other features are approximate.



Total area: approx. 83.3 sq. metres (897.0 sq. feet)



Plot 170, Flaxwell Fields, Lincoln Road, Sleaford, Ruskington, NG34 9AP

£245,000 Freehold

THE FINAL OPPORTUNITY TO PURCHASE THIS TYPE OF FABULOUS HOME AT FLAXWELL FIELDS

Winkworth

See things differently.

Winkworth Sleaford | 01529 303377 | sleaford@winkworth.co.uk

winkworth.co.uk/sleaford

Under the Property Misdescriptions Act 1991 these particulars are a guide and act as information only. All details are given in good faith and are believed to be correct at time of printing. Winkworth give no representation as to their accuracy and potential purchasers or tenants must satisfy themselves or otherwise as to their correctness. No employee of Winkworth has authority to make or give any representation or warranty in relation to this property.

Winkworth

See things differently.

Brand New Three Bedroom Semi-Detached Home | Last one of its Style Remaining | Side Entrance with Kitchen and Lounge Either Side | En-Suite to Master Bedroom | Chanceoption Homes Build | Block Paved Driveway | Fully Turfed and Fenced Rear Garden | Snap it up now! When it's gone No More Available!

DESCRIPTION

PLOT 170: We’re thrilled to present the last remaining Three-Bedroom Semi-Detached home at Flaxwell Fields in Ruskington —and it’s the highly sought-after ‘side entrance’ style! Located at the end of a cul-de-sac currently under construction, this stunning home offers an exceptional layout that combines both style and practicality. Upon entering, you’re greeted by a spacious entrance hall that leads seamlessly into the expansive Kitchen/Diner and inviting Lounge, with a convenient Downstairs Cloakroom directly ahead.

Upstairs, you’ll find threegenerously sized Bedrooms, including a Master bedroom with its own En-Suite, plus a family Bathroom. The property also boasts a well-designed front driveway with block paving for ample parking, while the rear garden is fully enclosed and beautifully turfed, with a few paved patio slabs to create the perfect outdoor space.

This is the final plot of this popular style, so don’t wait — once it’s gone, there won’t be another like it! Act fast to secure your dream home at Flaxwell Fields before it’s too late!

A

CCOMMODATION

Entrance Hall

Kitchen Diner - 11'7" x 15'8" (3.53m x 4.78m)

Downstairs Cloakroom

Lounge - 12'7" x 15'8" (3.84m x 4.78m)

Bedroom One - 11'7" x 11'9" (3.53m x 3.58m)

En-suite

Bedroom Two - 9'9" x 9'1" (2.97m x 2.77m)

Bedroom Three- 9'9" x 6'3" (2.97m x 1.9m)

Family Bathroom

Rear Garden

Agents Note- ALL photos used are for example purposes only. They are of a similar plot on the development. The colour of brick may also vary. There is a management fee of approx £100 per anum.

