



TARBERT ROAD, EAST DULWICH, SE22
OIEO £600,000 SHARE OF FREEHOLD

**A FANTASTIC TWO GOOD DOUBLE BEDROOM
SPLIT-LEVEL FLAT SITUATED IN A VERY
HIGHLY SOUGHT-AFTER CORNER OF SE22.**

Dulwich | 020 8299 2722 | dulwich@winkworth.co.uk

Winkworth



DESCRIPTION:

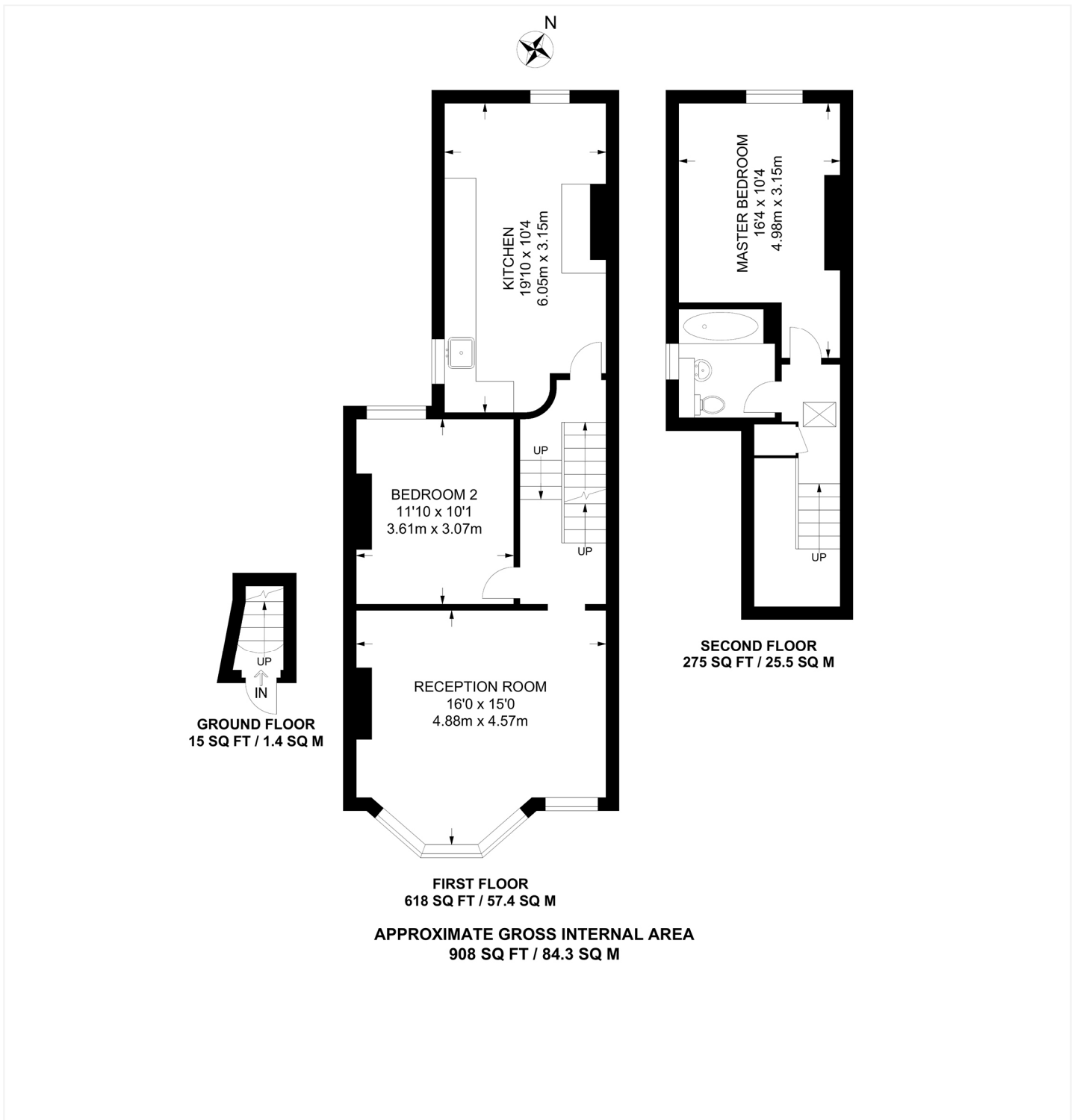
A fantastic, large split-level flat situated in a very highly sought-after corner of SE22. This stunning flat comprises two good double bedrooms and a study in the loft. The property is situated in a central East Dulwich location. The property offers a large reception, a modern bathroom, an eat-in kitchen-diner. Planning permission has also been granted from Southwark Council for a loft extension (double bedroom, walk in wardrobe and en-suite) and roof terrace. Situated on Tarbert Road, Lordship Lane is a short distance away with all the bars, restaurants, shops, and cinema or a short walk to Dulwich Village and Dulwich Park. Transport links are provided via East Dulwich with connections to London Bridge, Peckham Rye, or Denmark Hill for the overground or a short bus to Brixton for the underground.

AT A GLANCE

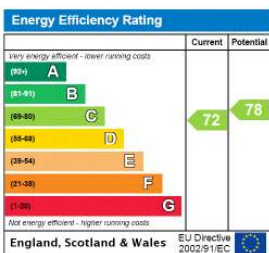
- Two Double Bedrooms
- Loft Extension Granted
- Large Split-Level Flat
- Large Reception Room
- Eat-In Kitchen-Diner
- Modern Bathroom
- Share of Freehold
- Chain Free







This floorplan is for illustration purposes only and is not to scale. The position and size of doors, windows, appliances and other features are approximate.



Dulwich | 020 8299 2722 | dulwich@winkworth.co.uk



winkworth.co.uk

See things differently

Winkworth wishes to inform prospective buyers and tenants that these particulars are a guide and act as information only. All our details are given in good faith and believed to be correct at the time of printing but they don't form part of an offer or contract. No Winkworth employee has authority to make or give any representation or warranty in relation to this property. All fixtures and fittings, whether fitted or not are deemed removable by the vendor unless stated otherwise and room sizes are measured between internal wall surfaces, including furnishings.