



## Lyncroft Mansions, London, NW6

£800,000 *Share of Freehold*



A well-presented three-bedroom first-floor apartment set within one of West Hampstead's most desirable mansion blocks. The property has been finished to the highest standards and offers a 19' reception room with an original fireplace and triple-aspect windows, along with two double bedrooms, a family bathroom, a separate guest cloakroom, and a fully fitted bespoke kitchen.

Lyncroft Gardens is conveniently located for the Thameslink, Overground, and West Hampstead Jubilee Line Underground stations, all being within 0.2 miles of the property.



**Winkworth West Hampstead**

020 7483 7602 | [westhampstead@winkworth.co.uk](mailto:westhampstead@winkworth.co.uk)

**Winkworth**

for every step...



## KEY FEATURES

- Three Bedrooms
- Bathroom
- Guest WC
- Reception Room
- Kitchen/Breakfast Room

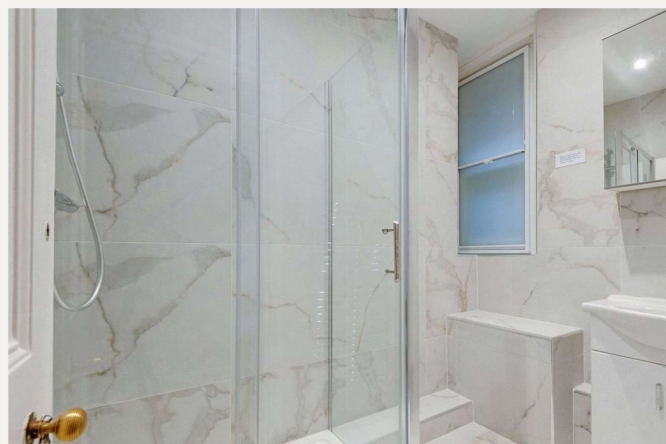
### Notes:

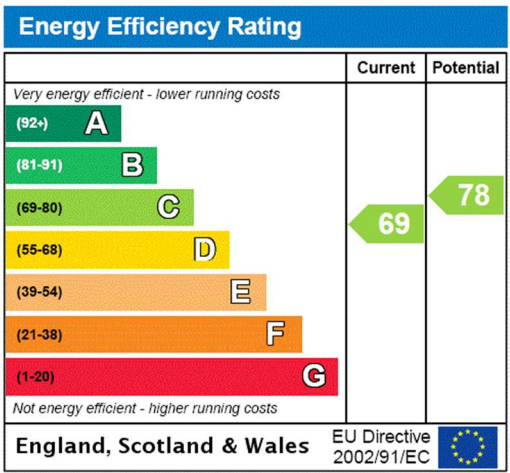
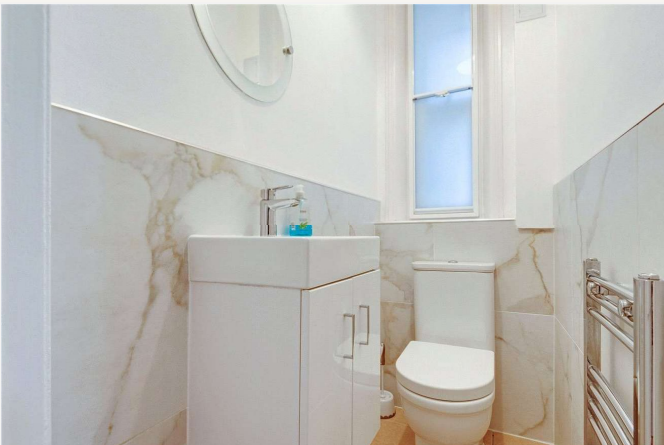
Images have been virtually staged using CGI and are for illustrative purposes only. They are intended to convey the concept and vision for the property. They are for guidance only, and may alter and do not necessarily represent a true and accurate depiction of the finished property.



## MATERIAL INFO

**Tenure:** Share of Freehold  
**Lease Expiry Date:** 24/06/2995  
**Service Charge:** £5900 per annum  
**Council Tax Band:** E  
**EPC rating:** C





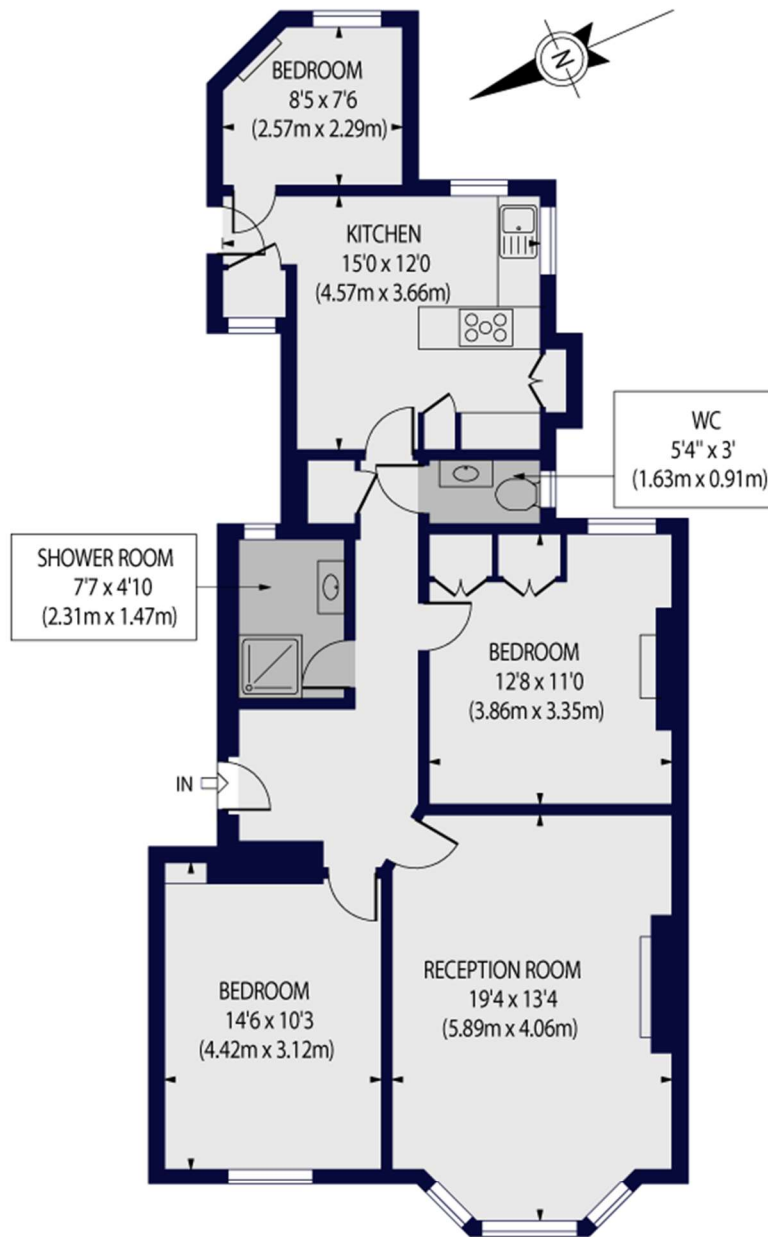
For more information, scan the QR code or visit the link below



<https://www.winkworth.co.uk/sale/property/WHP260007>

## LYNCROFT MANSONS, LONDON, NW6 1JY

Approx. Gross Internal Floor Area 951 sq ft. / 88.35 sq.m



FIRST FLOOR

For Illustration Purposes Only - Not To Scale Floor Plan by [www.nogaphotostudio.com](http://www.nogaphotostudio.com) Ref: No.48788

This floor plan should be used as a general outline for guidance only. Any intending purchaser or lessee should satisfy themselves by inspection, searches, enquiries and full survey as to the correctness of each statement. Any areas, measurements or distances quoted are approximate and should not be used to value a property or be the basis of any sale or let.

**Winkworth**

Where no figures are shown, we have been unable to ascertain the information. All figures that are shown were correct at the time of printing.

**Winkworth West Hampstead**

020 7483 7602 | [westhampstead@winkworth.co.uk](mailto:westhampstead@winkworth.co.uk)

**Winkworth**

for every step...

Winkworth wishes to inform prospective buyers and tenants that these particulars are a guide and act as information only. All our details are given in good faith and believed to be correct at the time of printing but they don't form part of an offer or contract. No Winkworth employee has authority to make or give any representation or warranty in relation to this property. All fixtures and fittings, whether fitted or not are deemed removable by the vendor unless stated otherwise and room sizes are measured between internal wall surfaces, including furnishings.