



ST. MARYS BUTTS, BERKSHIRE, RG1 2LS
£1,500 PER MONTH UNFURNISHED

**BRAND NEW TWO BEDROOM TOWN CENTRE
APARTMENT. AVAILABLE NOW.
UNFURNISHED.**

Reading | 0118 4022 300 | reading@winkworth.co.uk

Winkworth

for every step...

winkworth.co.uk



DESCRIPTION:

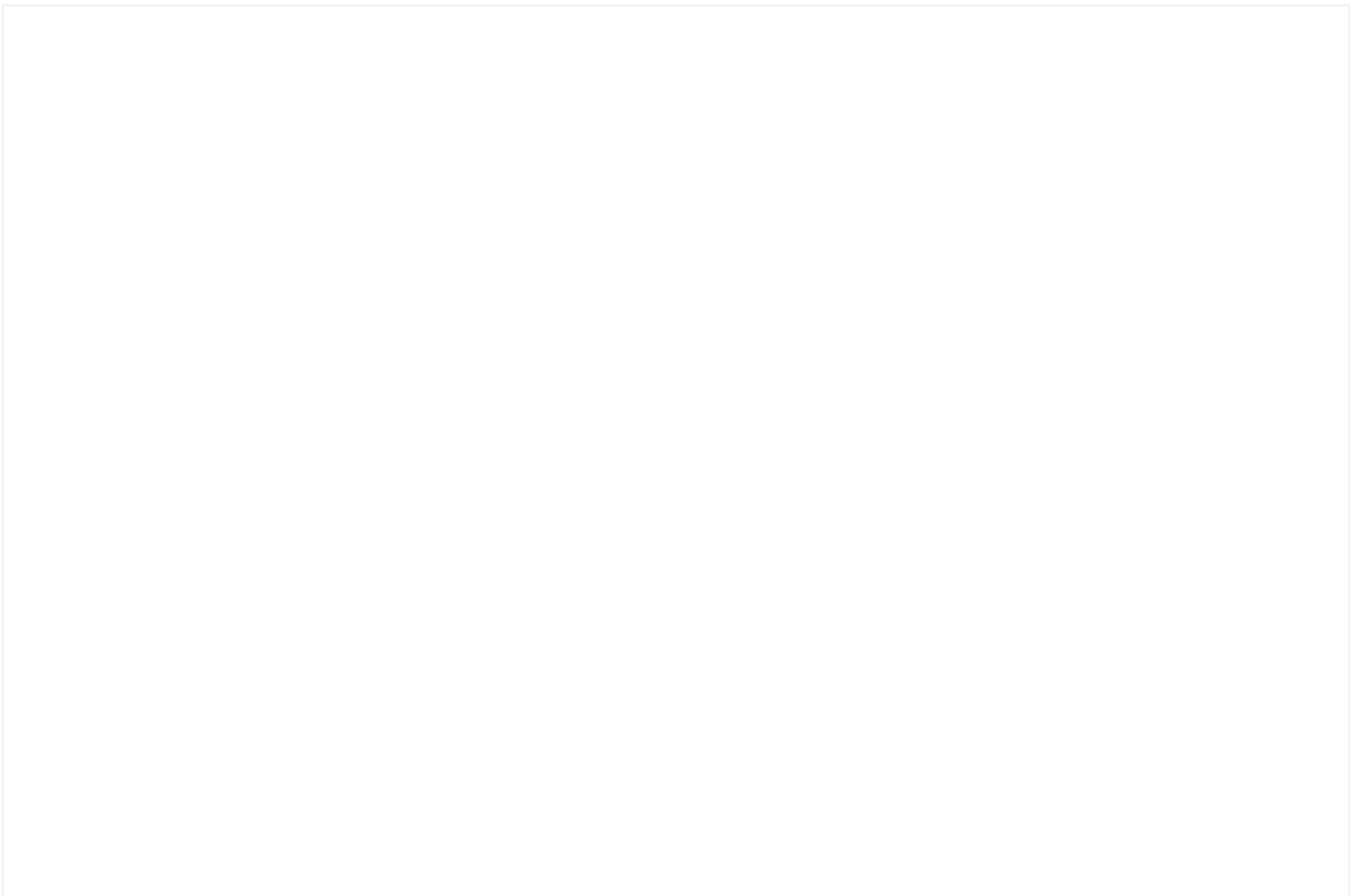
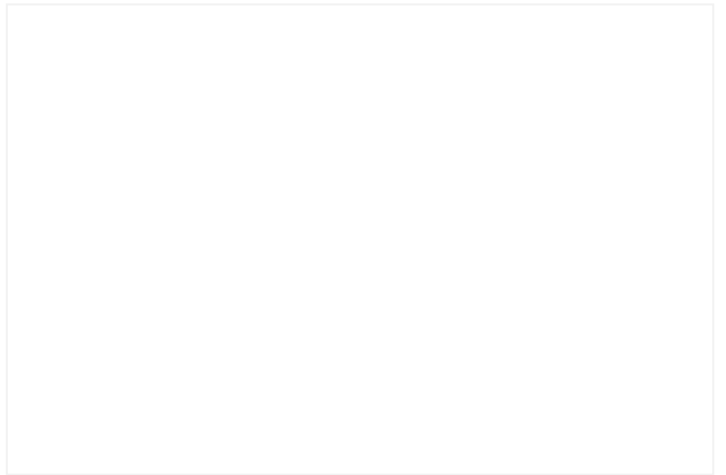
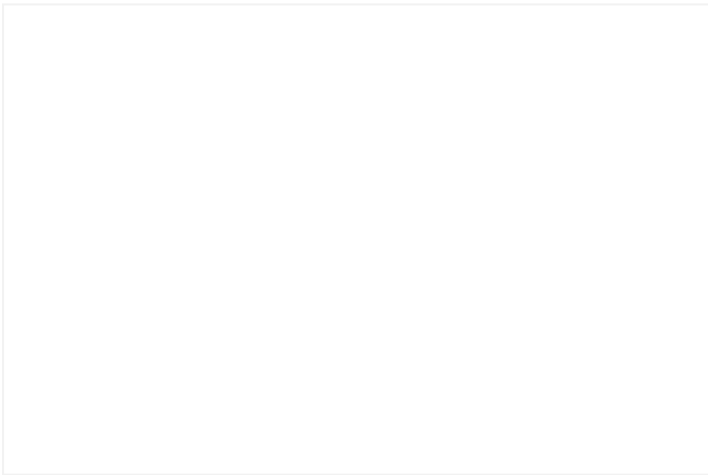
Brand new two bedroom town centre apartment located on the second floor of this newly converted building. The property is located in the heart of the Reading town centre within walking distance of the train station. Accommodation comprises spacious open plan living room/kitchen, two double bedrooms and a three piece bathroom. Additional benefits include video entry system and remote controlled heaters. Available now. Unfurnished.

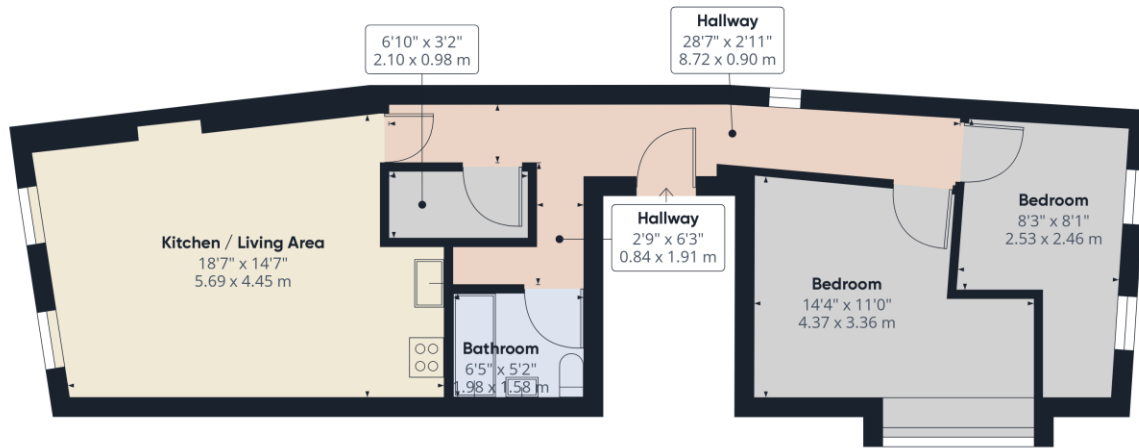
*No parking.

AT A GLANCE

- Brand new two bedroom apartment
- Second floor (no lift)
- Town centre location
- Council tax TBC
- No parking
- Available now
- Unfurnished







Approximate total area⁽¹⁾
656.72 ft²
61.01 m²

(1) Excluding balconies and terraces

While every attempt has been made to ensure accuracy, all measurements are approximate, not to scale. This floor plan is for illustrative purposes only.

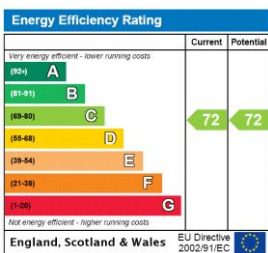
GIRAFFE360

This floorplan is for illustration purposes only and is not to scale. The position and size of doors, windows, appliances and other features are approximate.

Deposit: £1,730.77

Council Tax Band: TBC

Where no figures are shown, we have been unable to ascertain the information. All figures that are shown were correct at the time of printing.



Reading | 0118 4022 300 | reading@winkworth.co.uk

Winkworth

for every step...

winkworth.co.uk

Winkworth wishes to inform prospective buyers and tenants that these particulars are a guide and act as information only. All our details are given in good faith and believed to be correct at the time of printing but they don't form part of an offer or contract. No Winkworth employee has authority to make or give any representation or warranty in relation to this property. All fixtures and fittings, whether fitted or not are deemed removable by the vendor unless stated otherwise and room sizes are measured between internal wall surfaces, including furnishings.