



63A, ELSINORE ROAD, LONDON, SE23  
**£650,000 FREEHOLD**

**URBAN LIVING WITH A GREEN HEART — DISCOVER THE CHARM OF  
 FOREST HILL**

**Forest Hill** | | [foresthill@winkworth.co.uk](mailto:foresthill@winkworth.co.uk)



**DESCRIPTION:**

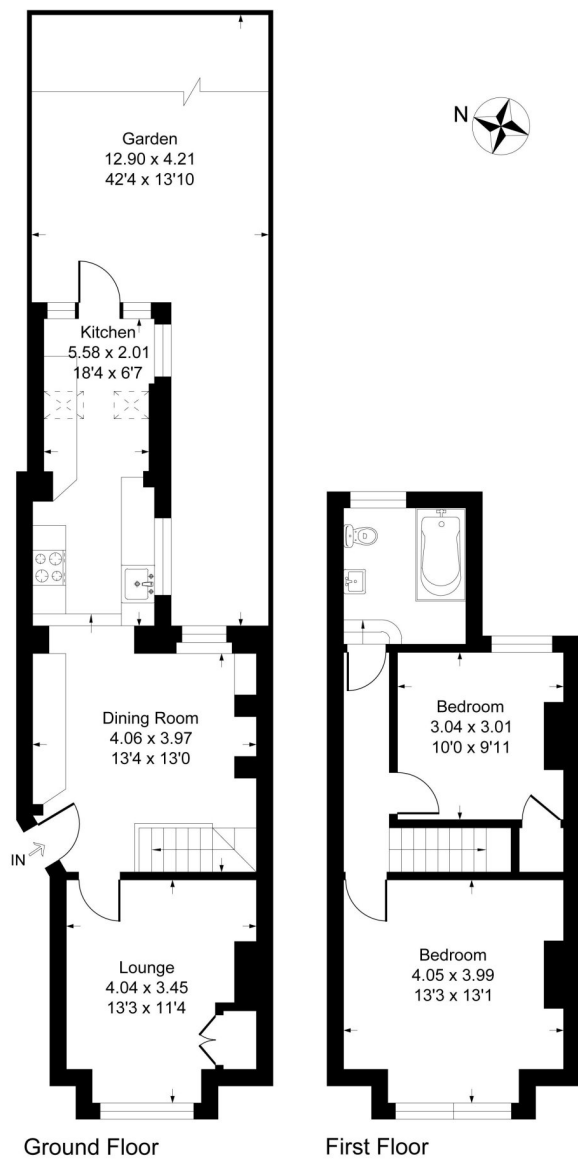
Located in the heart of Forest Hill, this property is ideally positioned with excellent transport links, including Forest Hill Station just 0.6 miles away. Local amenities such as shops, cafes, and restaurants are within easy reach, while green spaces like Mayow Park and Horniman Gardens are nearby. Perfect for those seeking a balance of urban convenience and natural beauty.





Elsinore Road, SE23 2SH

Approximate Gross Internal Area 79.6 sq m / 857 sq ft



This Plan is for layout guidance only. Not drawn to scale unless stated. Windows and door openings are approximate. Whilst every care is taken in the preparation of this plan, please check all dimensions shapes and compass bearings before making any decisions reliant upon them. Produced by Squarefootphoto.co.uk

This floorplan is for illustration purposes only and is not to scale. The position and size of doors, windows, appliances and other features are approximate.

Score	Energy rating	Current	Potential
92+	A		
81-91	B		
69-80	C		79 C
55-68	D		
39-54	E	54 E	
21-38	F		
1-20	G		

Tenure: Freehold