



SHELLEY COURT, READING, BERKSHIRE, RG1 5DG
£1,550 PER MONTH FURNISHED

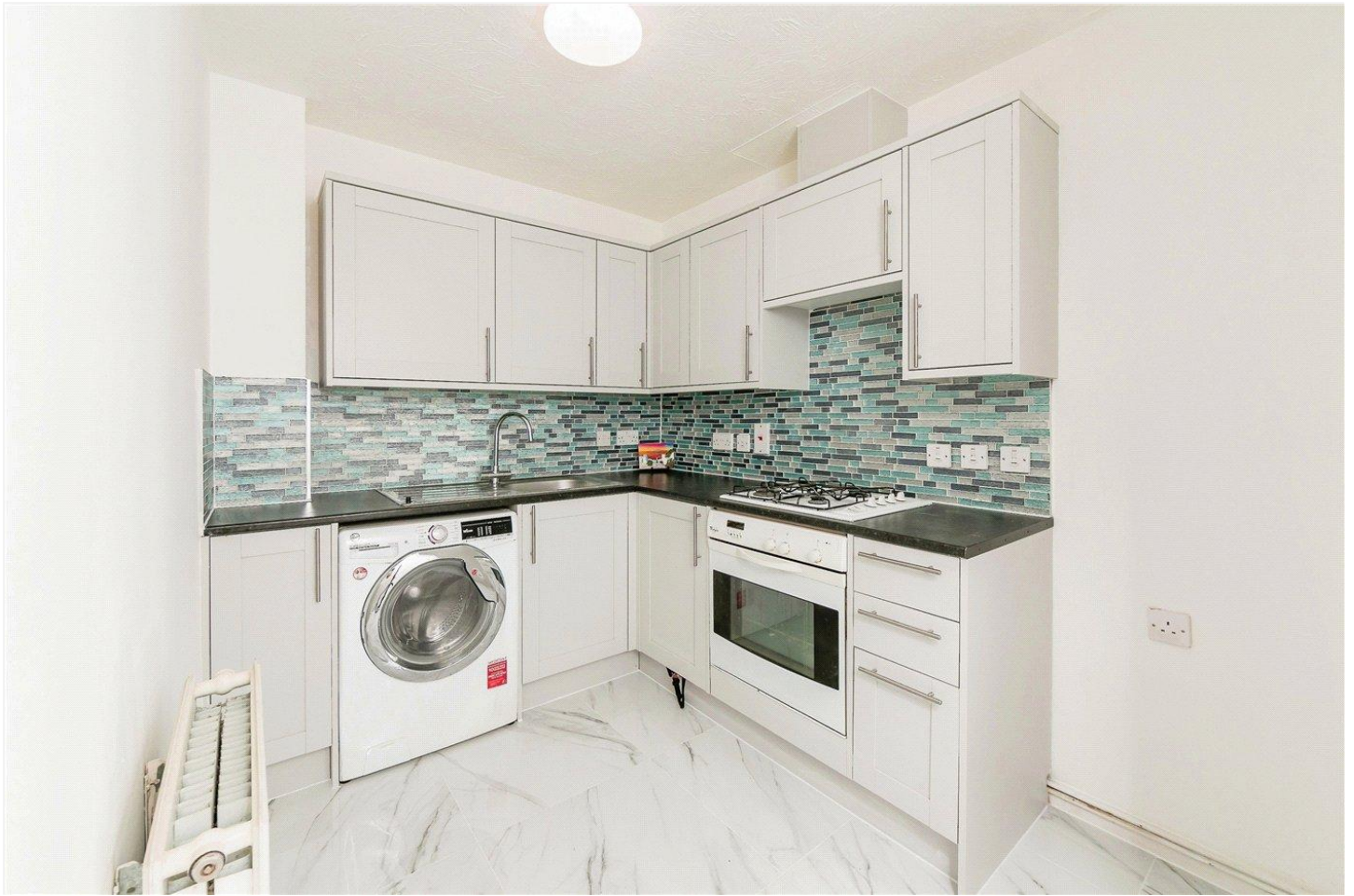
TWO BEDROOM THIRD FLOOR APARTMENT LOCATED CLOSE TO READING TOWN CENTRE AND ROYAL BERKSHIRE HOSPITAL

Reading | 0118 4022 300 | reading@winkworth.co.uk

Winkworth

for every step...

winkworth.co.uk



DESCRIPTION:

Two bedroom third floor apartment located close to Reading town centre and Royal Berkshire hospital. The property comprises reception room with private balcony, separate kitchen, two double bedrooms with an en suite shower room to the master bedroom and a further three piece bathroom. Benefits also include allocated parking space, lift access and communal gardens. Available now. Furnished.

AT A GLANCE

- Close to Reading town centre
- Two double bedrooms
- Two bathrooms
- Council tax band D
- Allocated parking space
- Available now
- Furnished



