

STREATHAM HILL, SW2  
£1,350 PER MONTH FURNISHED

A BEAUTIFULLY APPOINTED AND  
FURNISHED MONOCHROME APARTMENT IN  
THIS 'MODERNIST JEWEL' ON STREATHAM  
HILL

Streatham | 020 8769 6699 | [streatham@winkworth.co.uk](mailto:streatham@winkworth.co.uk)

**Winkworth**

for every step...

[winkworth.co.uk](http://winkworth.co.uk)



## DESCRIPTION:

Available exclusively through Winkworth, in a garden setting on Streatham Hill, this charming apartment is offered to let within this Grade II listed landmark 1930's modernist building that has a proactive and engaging resident's association. The property is on the first floor to the rear of the West block and has a light and airy pale decor throughout. The owner has maximised the use of the space and has creatively designed excellent storage and a stylish, curated interior. There is a bright double bedroom, a monochrome fitted kitchen with modern appliances, a smart bathroom/shower room with a WC and a wash hand basin and a living room with wooden flooring overlooking the gardens via smart crittall windows and a balcony. Located on Streatham Hill next to Telford bus garage and within easy walking distance of Streatham Hill station (Victoria in 17 minutes) the property benefits from easy access to Brixton tube down the hill, as well as Tulse Hill/Brockwell Park & Clapham. With well-maintained common parts, a lift and mature gardens, there is also the option of resident's parking available by separate negotiation. The property is offered furnished on a long term let and is available from the 23<sup>rd</sup> January 2023.

## AT A GLANCE

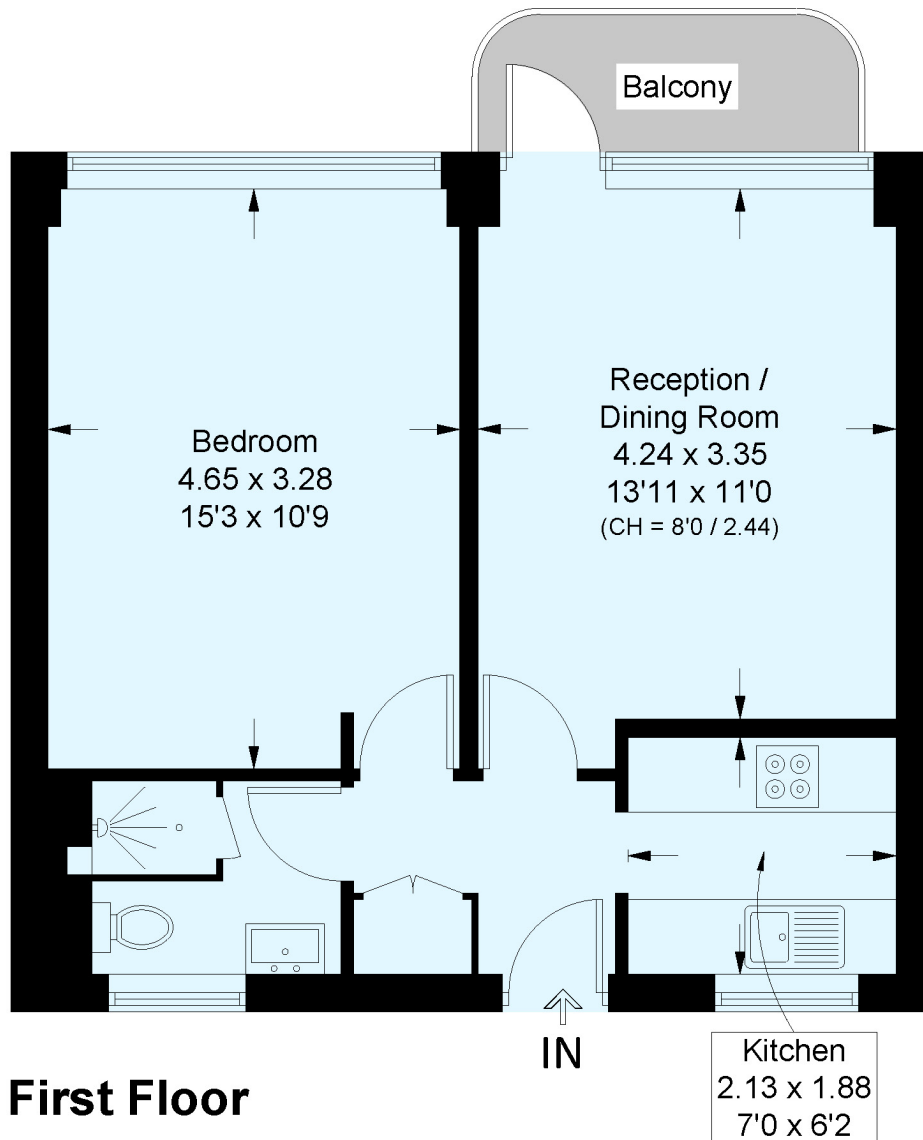
- Grade II listed Modernist Building
- First Floor Apartment
- Double Bedroom
- Bath/Shower Room
- Fitted Kitchen
- Reception
- Balcony
- Furnished
- Available 23<sup>rd</sup> January 2023
- Sole Agent





## Pullman Court, SW2

Approximate Floor Area = 43.3 sq m / 466 sq ft  
Including Limited Use Area (0.6 sq m / 6 sq ft)



This plan is for layout guidance only. Not drawn to scale unless stated. Windows and door openings are approximate. Whilst every care is taken in the preparation of this plan, please check all dimensions, shapes and compass bearings before making any decisions reliant upon them. (ID724088)

This floorplan is for illustration purposes only and is not to scale. The position and size of doors, windows, appliances and other features are approximate.

Energy Efficiency Rating		
	Current	Potential
Very energy efficient - lower running costs		
(92+) <b>A</b>		
(81-91) <b>B</b>		
(69-80) <b>C</b>	<b>72</b>	<b>72</b>
(54-68) <b>D</b>		
(39-54) <b>E</b>		
(21-38) <b>F</b>		
(1-20) <b>G</b>		
Not energy efficient - higher running costs		
England, Scotland & Wales EU Directive 2002/91/EC		

Streatham | 020 8769 6699 | streatham@winkworth.co.uk

**Winkworth**

for every step...

winkworth.co.uk

Winkworth wishes to inform prospective buyers and tenants that these particulars are a guide and act as information only. All our details are given in good faith and believed to be correct at the time of printing but they don't form part of an offer or contract. No Winkworth employee has authority to make or give any representation or warranty in relation to this property. All fixtures and fittings, whether fitted or not are deemed removable by the vendor unless stated otherwise and room sizes are measured between internal wall surfaces, including furnishings.