



Sinclair Road, Brook Green, W14

£390,000 Share of Freehold

A delightful, one bedroom flat situated on the top (third) floor of a well maintained mid-terrace Victorian house.

Reception Room | Kitchen | Bedroom | Shower Room | 353 Sq Ft / 33 Sq M | Council Tax Band C | EPC Rating Band C

Winkworth



LOCATION

The property is located mid-way along Sinclair Road, close to the junction with Hofland Road, ideal for the numerous amenities of both Brook Green and Shepherds Bush, including Westfield London, as well as the open spaces of Holland Park. The closest stations are Shepherds Bush (Central Line and Overground) and Hammersmith (Piccadilly, District, Circle and Hammersmith & City Lines). The eagerly anticipated and soon to open Kensington Olympia redevelopment is also within close proximity.

DESCRIPTION

Extremely well presented throughout, the property offers accommodation which comprises entrance hall with storage cupboard, reception room, recently fitted kitchen, bedroom and bathroom. An ideal first-time buy.

Share of Freehold with an underlying lease of 125 years from 24 June 1987 (87 years remaining)

Service Charge:- £1200 p.a.

Ground Rent:- N/A

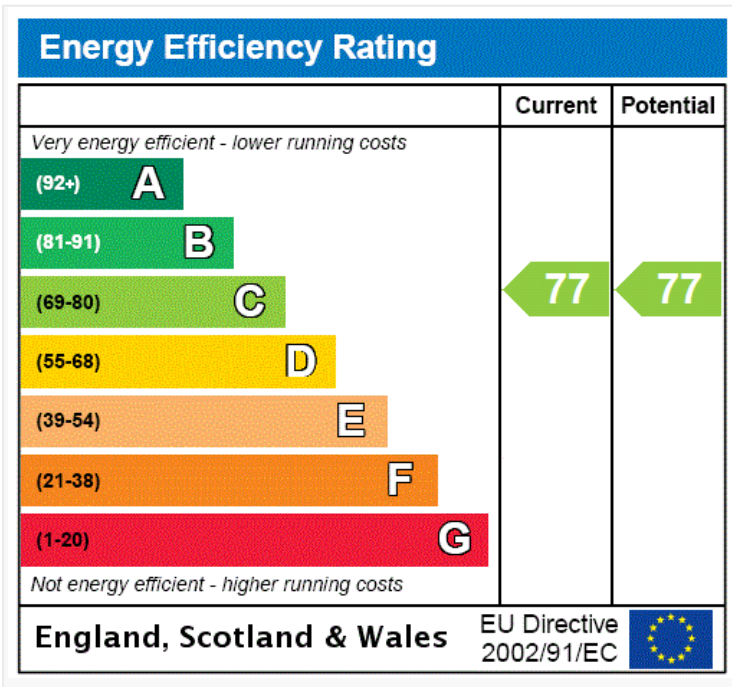


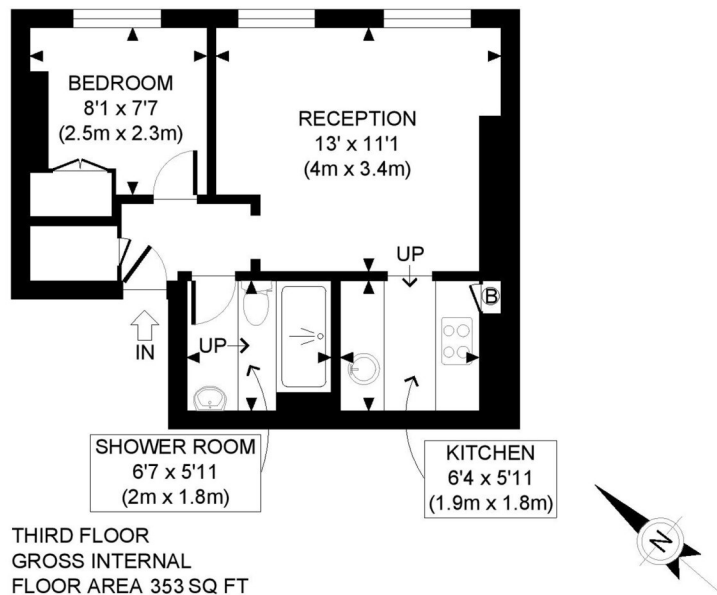


LOCAL AUTHORITY
Hammersmith & Fulham

TENURE
Share of Freehold 87 years 5 months.

PRICE: £390,000 Share of Freehold





APPROX. GROSS INTERNAL FLOOR AREA: 353 SQ FT/ 33 SQM

Winkworth

This plan is for illustrative purposes only and should be used as such by any prospective client. Whilst every attempt has been made to ensure the accuracy of the Floor Plan contained here, measurements of the doors, windows, rooms and any other items are approximate and no responsibility is taken for any errors, omissions, or misstatement. The services, systems and appliances shown have not been tested and no guarantee as to the operability or efficiency can be given.

PROPERTY PHOTO PLANS .CO.UK
ONE STOP SHOP FOR PROPERTY MARKETING

The displayed square footage is taken from the floor plans with measurements created using the Royal Institute of Chartered Surveyors' Code of Practice for Measuring. These measurements are approximate and included for illustrative purposes only. Winkworth does not make any representation as to the accuracy of these measurements and you should seek to verify them for yourself. Winkworth accept no liability for any loss you may suffer if you rely on these measurements.

Hammersmith | 0207 371 4466 | hammersmith@winkworth.co.uk

Winkworth

for every step...

Under the Property Misdescriptions Act 1991, these Particulars are a guide and act as information only. All details are given in good faith and are believed to be correct at time of printing. Winkworth give no representation as to their accuracy and potential purchasers or tenants must satisfy themselves by inspection or otherwise as to their correctness. No employee of Winkworth has authority to make or give any representation or warranty in relation to this property.