

KARINA COURT, WOODSIDE PARK, LONDON, N12
OIEO £375,000 SHARE OF FREEHOLD

A WELL PRESENTED AND SPACIOUS GROUND FLOOR FLAT SET IN A PRIME LOCATION AND PRIVATE OUTSIDE SPACE.

Finchley | 020 8349 3388 | finchley@winkworth.co.uk



for every step...

winkworth.co.uk



DESCRIPTION:

We are pleased to offer this well presented and spacious one bedroom ground floor flat set in a modern period conversion. The property is ideally located and within easy access to local parks, schools, transport links such as West Finchley underground and shops such as Waitrose.

The property comprises of a good size entrance hallway, extremely spacious open plan fully fitted kitchen with a wonderful island, dining and living area with doors leading out to its own private terrace area, double bedroom and modern fitted bathroom.

Further benefits include parking, communal gardens and a share of freehold.

This would be a wonderful purchase for a first time buyer or a great investment opportunity for a buy to let investor.

An internal viewing is highly recommended.

AT A GLANCE

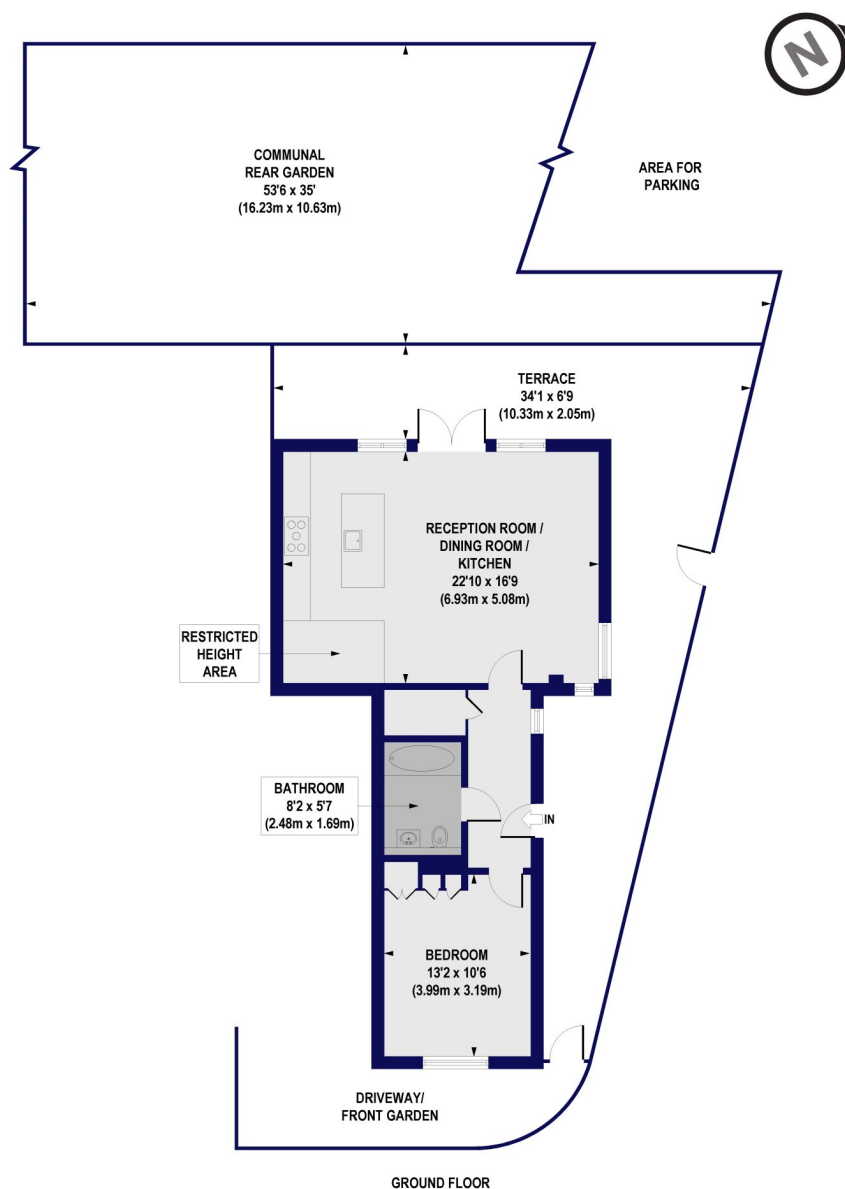
- Set in a modern period conversion
- Ground floor
- Open plan living
- Double Bedroom
- Modern bathroom
- Private outside space
- Parking & Communal gardens
- Share of freehold





Karina Court, Westbury Road, N12

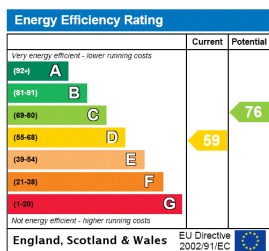
Approx. Gross Internal Floor Area 663 sq. ft / 61.61 sq. m (Including Restricted Height Area)
 Approx. Gross Internal Floor Area 630 sq. ft / 58.57 sq. m (Excluding Restricted Height Area)



All measurements of walls, doors, windows, fittings and appliances, including their size and location, are shown as standard sizes and do not constitute any warranty or representation by the seller, their agent or CP Creative. Any intending purchaser must satisfy himself by inspection or otherwise as to the correctness of the information contained in these plans. This plan is for illustrative purposes only and should be used as such by any prospective purchasers.

Winkworth

This floorplan is for illustration purposes only and is not to scale. The position and size of doors, windows, appliances and other features are approximate.



Winkworth

Finchley | 020 8349 3388 | finchley@winkworth.co.uk

for every step...

winkworth.co.uk

Winkworth wishes to inform prospective buyers and tenants that these particulars are a guide and act as information only. All our details are given in good faith and believed to be correct at the time of printing but they don't form part of an offer or contract. No Winkworth employee has authority to make or give any representation or warranty in relation to this property. All fixtures and fittings, whether fitted or not are deemed removable by the vendor unless stated otherwise and room sizes are measured between internal wall surfaces, including furnishings.