



Abercairn Road, SW16

£725,000 *Freehold*

4  2  2 

Winkworth is pleased to offer to the market this four-bedroom family home with a generous rear and front garden, close to lovely amenities and excellent transport links.

KEY FEATURES

- Freehold
- 4 generous bedrooms
- A large double reception room
- Terraced
- Private west-facing garden
- Council Tax Band D



Tooting

020 8767 5221 | amarchussen@winkworth.co.uk

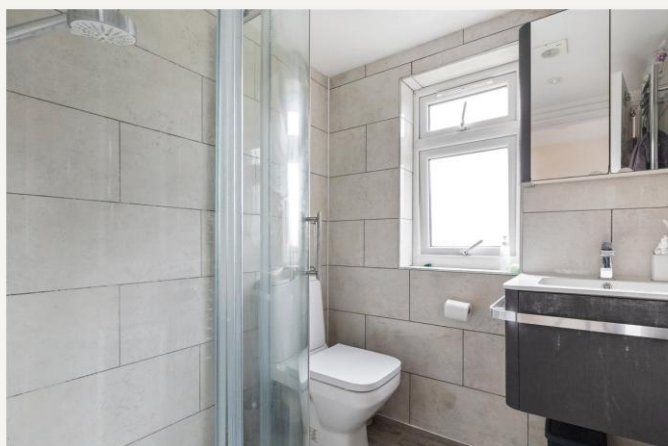
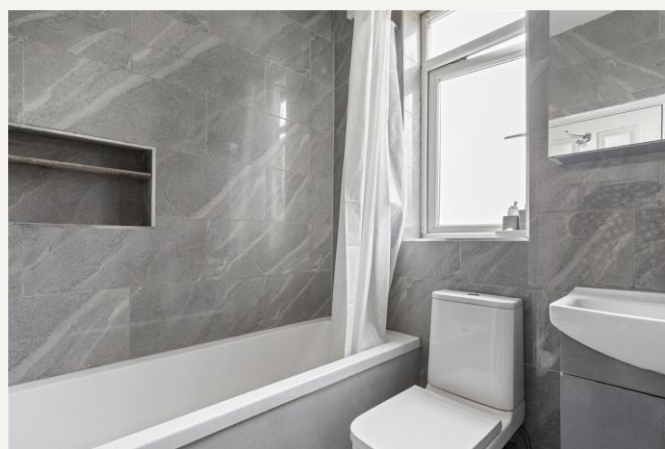
Winkworth

for every step...



The property comprises; 4 generous bedrooms full of natural light and an array of storage options, a spacious double reception room with a separate kitchen and dining room leading out into the private West facing garden.

Abercairn is extremely well-located with residents having easy access to Streatham Common station and Streatham Station with their Thameslink services, as well as a multitude of accessible bus routes into Brixton, Streatham High Road and Streatham common station with its fast links into London Victoria & London Bridge. Residents also benefit from the nearby amenities of Streatham and the lovely, open green spaces of Streatham common.

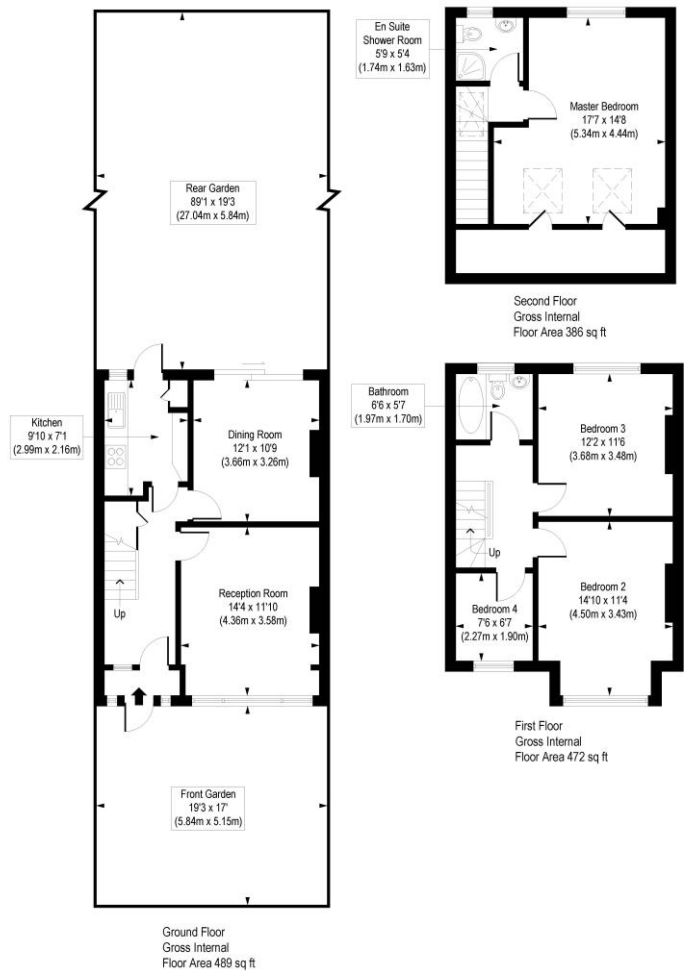




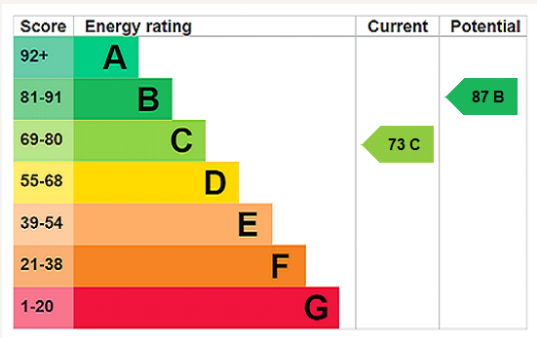
MATERIAL INFO

Tenure: Freehold
Council Tax Band: D
EPC rating: C

Abercairn Road, SW16
Approx. Gross Internal Floor Area 1348 sq. ft / 125.23 sq. m



COMPLIANT WITH RICS CODE OF MEASURING PRACTICE: Floorplan is for illustrative purposes only and is not to scale. Every attempt has been made to ensure the accuracy of the floorplan shown, however all measurements, fixtures, fittings and data shown are an approximate interpretation for illustrative purposes only. Liability for errors, omissions or mis-statement through negligence or otherwise is hereby excluded.



Where no figures are shown, we have been unable to ascertain the information. All figures that are shown were correct at the time of printing.