



WEST HILL, SW15  
£550,000 SHARE OF FREEHOLD

Winkworth





## WEST HILL, SW15

Nestled in the sought-after West Hill area of SW18, this beautifully presented 1-bedroom flat offers an ideal blend of comfort, convenience, and potential. With 775sqft of well-arranged living space, this property is perfect for individuals or couples seeking a low-maintenance home with outdoor space.

The flat boasts a bright and spacious reception room, offering a welcoming area for relaxation or entertaining. The separate kitchen is well-equipped, ideal for day-to-day living. The generously sized bedroom is filled with natural light, creating a peaceful retreat.

A highlight of the property is the delightful conservatory, which opens onto a private garden — an excellent space for outdoor dining, gardening, or simply unwinding in a tranquil setting. The garden also includes a shed, providing additional storage or workspace.

The property is completed by a well-appointed bathroom, finished to a high standard, offering a modern and comfortable space.

Perfectly positioned for easy access to transport links, this property is within walking distance of Southfields Station, providing quick connections into central London. The popular Southside Shopping Centre is nearby, offering a wide range of shops, cafés, and restaurants, while the green spaces of Wandsworth Park are just a short distance away.

This charming flat offers an excellent opportunity for those looking for a comfortable home with convenient transport links and local amenities in a desirable area of Wandsworth.



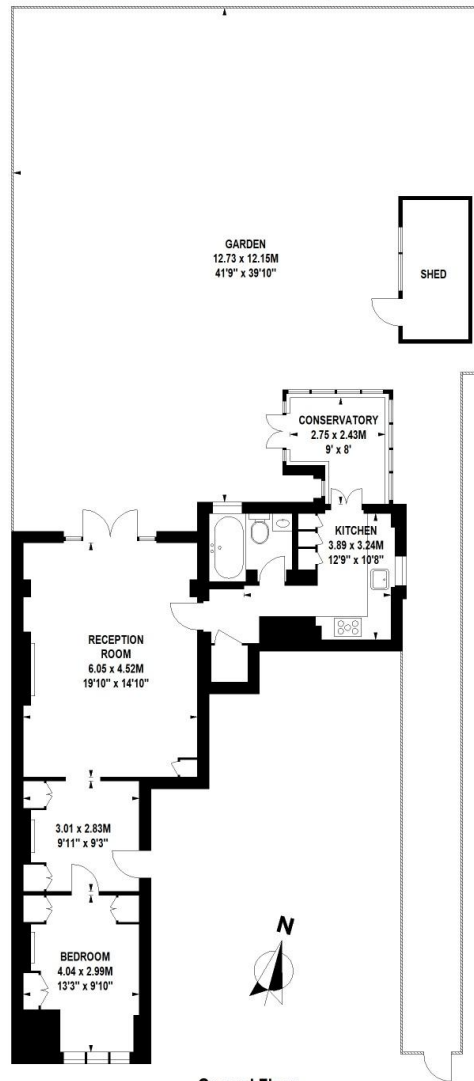






## West Hill, SW15

Approximate Gross Internal Area 72 sq.m / 775 sq. ft



Ground Floor

Floor Plan produced for WINKWORTH by Mays Floorplans ©. Tel 020 3397 4594  
Illustration for identification purposes only, not to scale  
All measurements are maximum, and include wardrobes and window bays where applicable

Southfields | 020 8877 1000 | [southfields@winkworth.co.uk](mailto:southfields@winkworth.co.uk)

[winkworth.co.uk](http://winkworth.co.uk)

Winkworth wishes to inform prospective buyers and tenants that these particulars are a guide and act as information only. All our details are given in good faith and believed to be correct at the time of printing but they don't form part of an offer or contract. No Winkworth employee has authority to make or give any representation or warranty in relation to this property. All fixtures and fittings, whether fitted or not are deemed removable by the vendor unless stated otherwise and room sizes are measured between internal wall surfaces, including furnishings.

**Winkworth**