



Wellington Court, St John's Wood, London, NW8

£799,950 *Leasehold*

4  1  3 

A spacious four bedroom property, with three bathrooms and a double-fronted reception room located on the raised ground floor of this period, portered development less than 100 metres away from both St John's Wood High Street and Underground Station (Jubilee Line). Furthermore, both Regent's Park and Lord's Cricket Ground are within a one mile radius. The property benefits from communal heating & hot water, high ceilings, a separate kitchen. Please note that the property is offered for sale with no onward chain and a lease-term which expires 25/03/2074



Winkworth St John's Wood

020 7586 7001 | stjohnswood@winkworth.co.uk



KEY FEATURES

- Principal and Second Bedroom with En-Suite Bathrooms
- Two Further Bedrooms
- Family Bathroom
- Reception/Dining Room
- Separate Kitchen
- Ground Floor
- Porterage
- Leasehold



MATERIAL INFO

Tenure: Leasehold

Lease Expiry Date: 25/03/2074

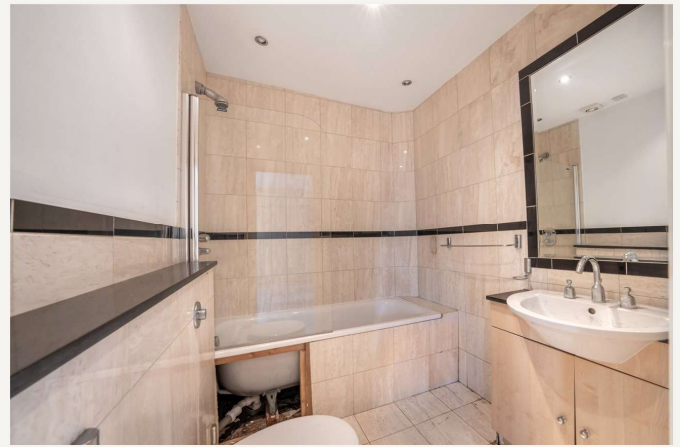
Service Charge: £21,043.4 per annum

Ground Rent: £60 Annually (subject to increase)

Council Tax Band: G

EPC rating: To be confirmed





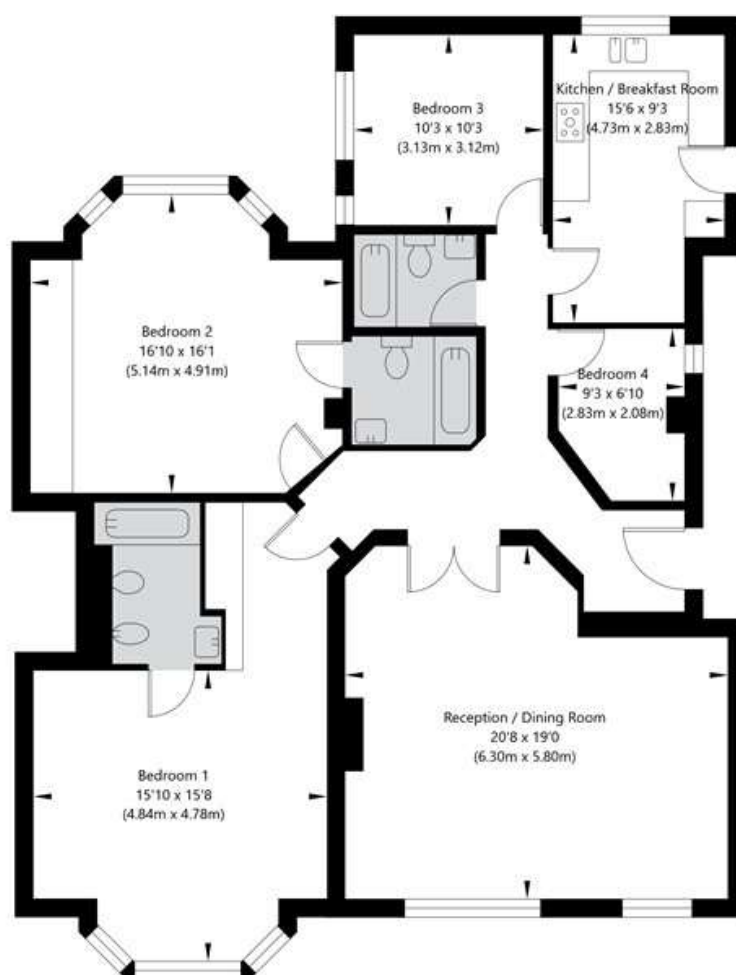
For more information, scan the QR code or visit the link below



<https://www.winkworth.co.uk/sale/property/SJD260002>

Wellington Court, Wellington Road, London NW8 9TB

Ground Floor
GROSS INTERNAL FLOOR AREA
APPROX. 140.64 SQ M / 1514 SQ FT



APPROXIMATE GROSS INTERNAL FLOOR AREA 140.64 SQ M / 1514 SQ FT
THIS FLOOR PLAN IS FOR ILLUSTRATIVE PURPOSES ONLY AND
SHOULD BE USED FOR THIS PURPOSE BY PROSPECTIVE APPLICANTS AS ITS NOT TO SCALE.

(c) AMBERSHORE PIX LIMITED / PHOTO - VIDEO - FLOOR PLANS / 0800 999 1577 / WWW.AMBERSHOREPIX.CO.UK

Where no figures are shown, we have been unable to ascertain the information. All figures that are shown were correct at the time of printing.

Winkworth St John's Wood

020 7586 7001 | stjohnswood@winkworth.co.uk

Winkworth wishes to inform prospective buyers and tenants that these particulars are a guide and act as information only. All our details are given in good faith and believed to be correct at the time of printing but they don't form part of an offer or contract. No Winkworth employee has authority to make or give any representation or warranty in relation to this property. All fixtures and fittings, whether fitted or not are deemed removable by the vendor unless stated otherwise and room sizes are measured between internal wall surfaces, including furnishings.