



HICHISSON ROAD, NUNHEAD, SE15
£850,000 FREEHOLD

**A STUNNING THREE DOUBLE BEDROOM
VICTORIAN MID TERRACE HOME, OFFERED
TO THE MARKET IN FANTASTIC CONDITION.**

Dulwich | 020 8299 2722 | dulwich@winkworth.co.uk

Winkworth

Tenure Freehold | Council Tax Band D – London Borough of Southwark

winkworth.co.uk

See things differently



rah Ridgeway

DESCRIPTION:

A stunning Victorian mid terrace home, offered to the market in fantastic condition. Comprising on the ground floor a spacious open-plan kitchen/ reception, complete with wood flooring, sash windows, plantation shutters and a beautiful finish. The kitchen to rear is complemented by a fully fitted kitchen with wooden worktops, range cooker and bi-fold doors leading out to a spacious, sunny garden. The ground floor boasts the potential to extend into the side return STPP. The first floor offers two spacious double bedrooms, with built-in wardrobes and a gorgeous family bathroom. The loft has been converted to provide a stunning master bedroom, complete with Juliet balcony and lots of storage in the eaves. The location offers fantastic access to Peckham Rye Park. The shops, bars and restaurants on Forest Hill Road, Nunhead Green, Lordship Lane and Rye Lane. Transport links are provided via Nunhead station for direct links to London Victoria, or a short bus/ walk to Peckham Rye for the Overground.

AT A GLANCE

- Three Double Bedrooms
- Victorian Mid Terraced House
- Two Receptions
- Solid Oak Kitchen
- Modern Bathroom
- Front & Rear Garden
- Close To Peckham Rye Common
- Potential To Extend STPP





Sarah Ridgeway



Ridgeway



Sarah Ridgeway

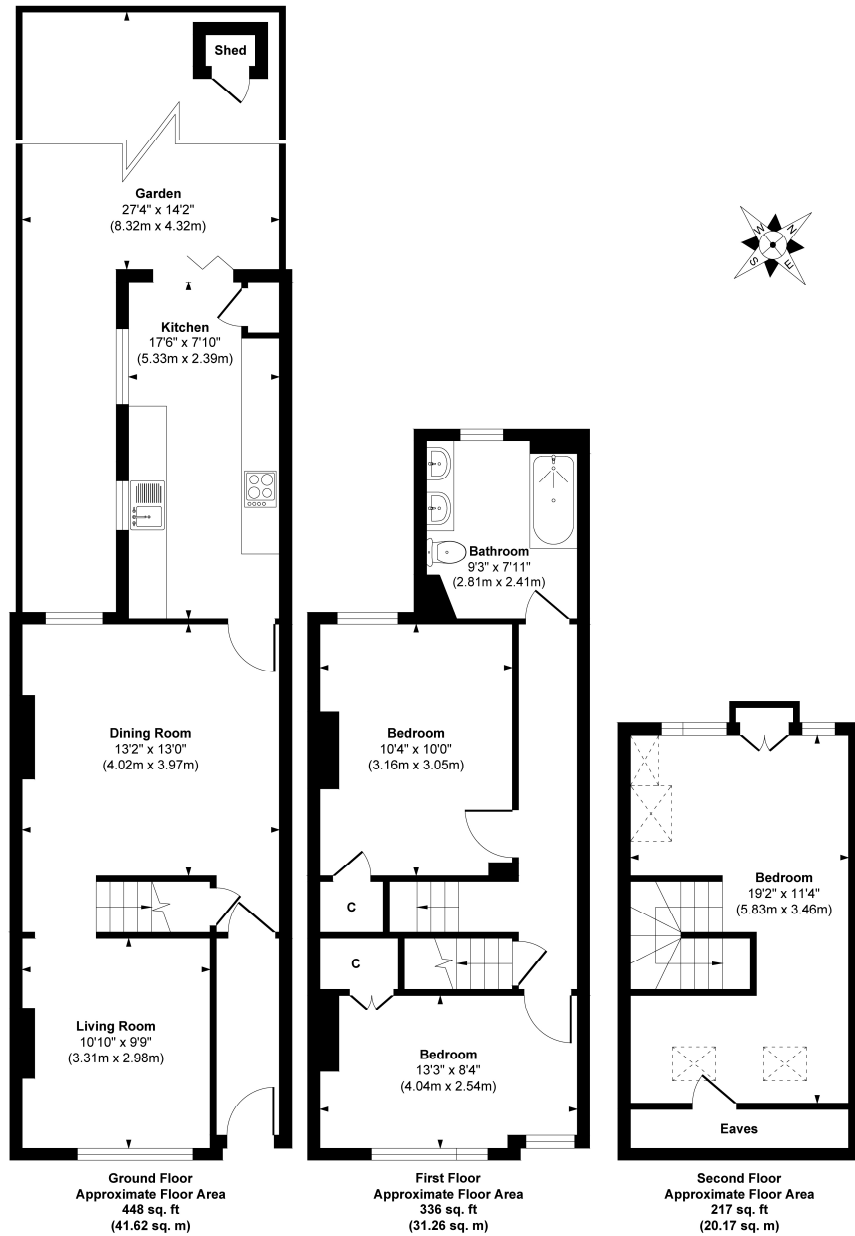


Sarah Ridgeway



Sarah Ridgeway

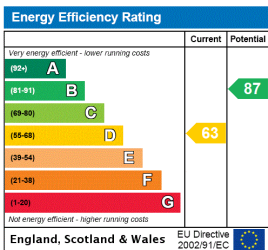
Hichisson Road



Approx. Gross Internal Floor Area 1001 sq. ft / 93.05 sq. m

Illustration for identification purposes only, measurements are approximate, not to scale.
Produced by Elements Property

This floorplan is for illustration purposes only and is not to scale. The position and size of doors, windows, appliances and other features are approximate.



Dulwich | 020 8299 2722 | dulwich@winkworth.co.uk

Winkworth

winkworth.co.uk

See things differently

Winkworth wishes to inform prospective buyers and tenants that these particulars are a guide and act as information only. All our details are given in good faith and believed to be correct at the time of printing but they don't form part of an offer or contract. No Winkworth employee has authority to make or give any representation or warranty in relation to this property. All fixtures and fittings, whether fitted or not are deemed removable by the vendor unless stated otherwise and room sizes are measured between internal wall surfaces, including furnishings.