



LANDCROFT ROAD, EAST DULWICH, LONDON, SE22
£1,350,000 FREEHOLD

**THIS TRULY AMAZING, ONE OF KIND FOUR
BEDROOM HOUSE IS SITUATED ON THIS
PRIME ROAD IN THE HEART OF EAST DULWICH.**

Dulwich | 020 8299 2722 | dulwich@winkworth.co.uk

Tenure Freehold | Council Tax Band D – London Borough of Southwark

Winkworth

winkworth.co.uk

See things differently



DESCRIPTION:

Nestled on a sought-after road in the heart of East Dulwich, this spectacular four-bedroom house is truly one of a kind. Beautifully modernised and extended, it offers the perfect blend of contemporary design and classic charm, making it an exceptional family home. The heart of the property is the expansive kitchen/diner, which seamlessly opens onto a stunning landscaped garden—ideal for entertaining or enjoying peaceful mornings. The elegant double reception room provides ample space for relaxation, while the practical addition of a downstairs WC and utility room ensures convenience for modern living. Upstairs, the house boasts four generously sized bedrooms, complemented by a luxurious family bathroom and a sleek, separate shower room, all thoughtfully designed to combine style and functionality. Situated just moments from the vibrant Lordship Lane, the property is perfectly positioned to enjoy an array of boutique shops, trendy bars, and exceptional restaurants. For commuters, East Dulwich station offers excellent transport links to London Bridge and beyond, ensuring effortless access to the city.

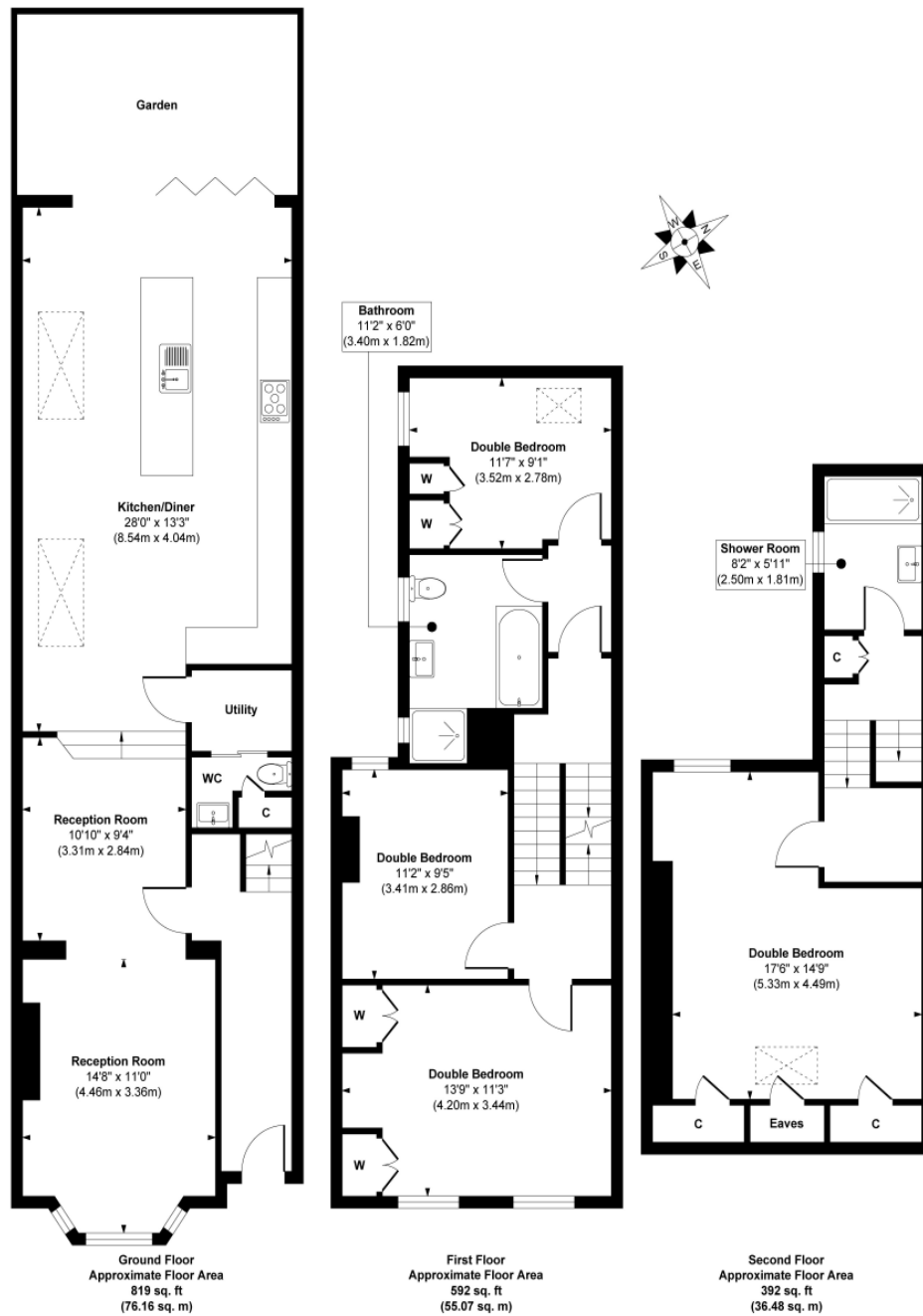
AT A GLANCE

- Four generously sized double bedrooms
- Two spacious reception rooms
- Two modern bathrooms
- Charming end-of-terrace house
- Beautiful garden, perfect for outdoor enjoyment
- Period property with character features





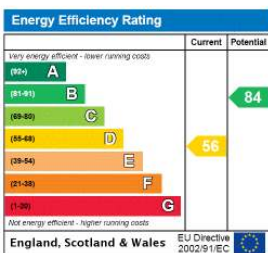
Landcroft Road



Approx. Gross Internal Floor Area 1803 sq. ft / 167.71 sq. m

Illustration for identification purposes only, measurements are approximate, not to scale.

This floorplan is for illustration purposes only and is not to scale. The position and size of doors, windows, appliances and other features are approximate.



Dulwich | 020 8299 2722 | dulwich@winkworth.co.uk

Winkworth

winkworth.co.uk

See things differently

Winkworth wishes to inform prospective buyers and tenants that these particulars are a guide and act as information only. All our details are given in good faith and believed to be correct at the time of printing but they don't form part of an offer or contract. No Winkworth employee has authority to make or give any representation or warranty in relation to this property. All fixtures and fittings, whether fitted or not are deemed removable by the vendor unless stated otherwise and room sizes are measured between internal wall surfaces, including furnishings.