



ETON HOUSE, WALCOT STREET, BATH, BA1

£2,000PCM

City centre 3-bedroom maisonette within an impressive Georgian building.

Bath | 01225 829 000 | bath@winkworth.co.uk

Winkworth

for every step...

winkworth.co.uk



DESCRIPTION:

Winkworth are delighted to bring to the rental market this well-presented 3-bedroom Georgian maisonette.

Arranged over 4 floors this property has a modern feel whilst retaining original features.

The property has its own ground level entrance which leads you via stairs to the first floor where you will find an impressive, light, and spacious reception room and bedroom.

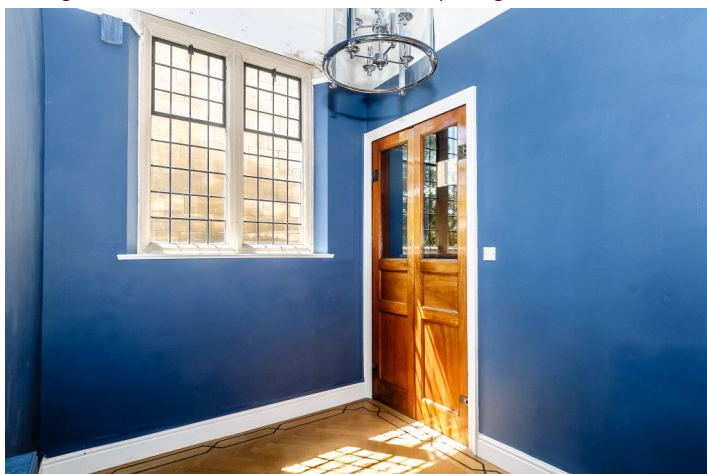
On the second floor is a large modern kitchen with central island incorporating fitted appliances; oven/hob, fridge, freezer, and dishwasher. On the same level there is also a separate w/c with toilet and basin and an additional reception room perfect as a dining room for entertaining or a home office.

The top floor of this expansive property has 2 double bedrooms and main bathroom with modern freestanding bath, and separate shower.

The property further benefits from gas central heating

Situated in the heart of the city, you are only a stone's throw away from all local amenities and transport links, an array of cafes, shops, and bars.

Parking is on street and used within the residents parking scheme.



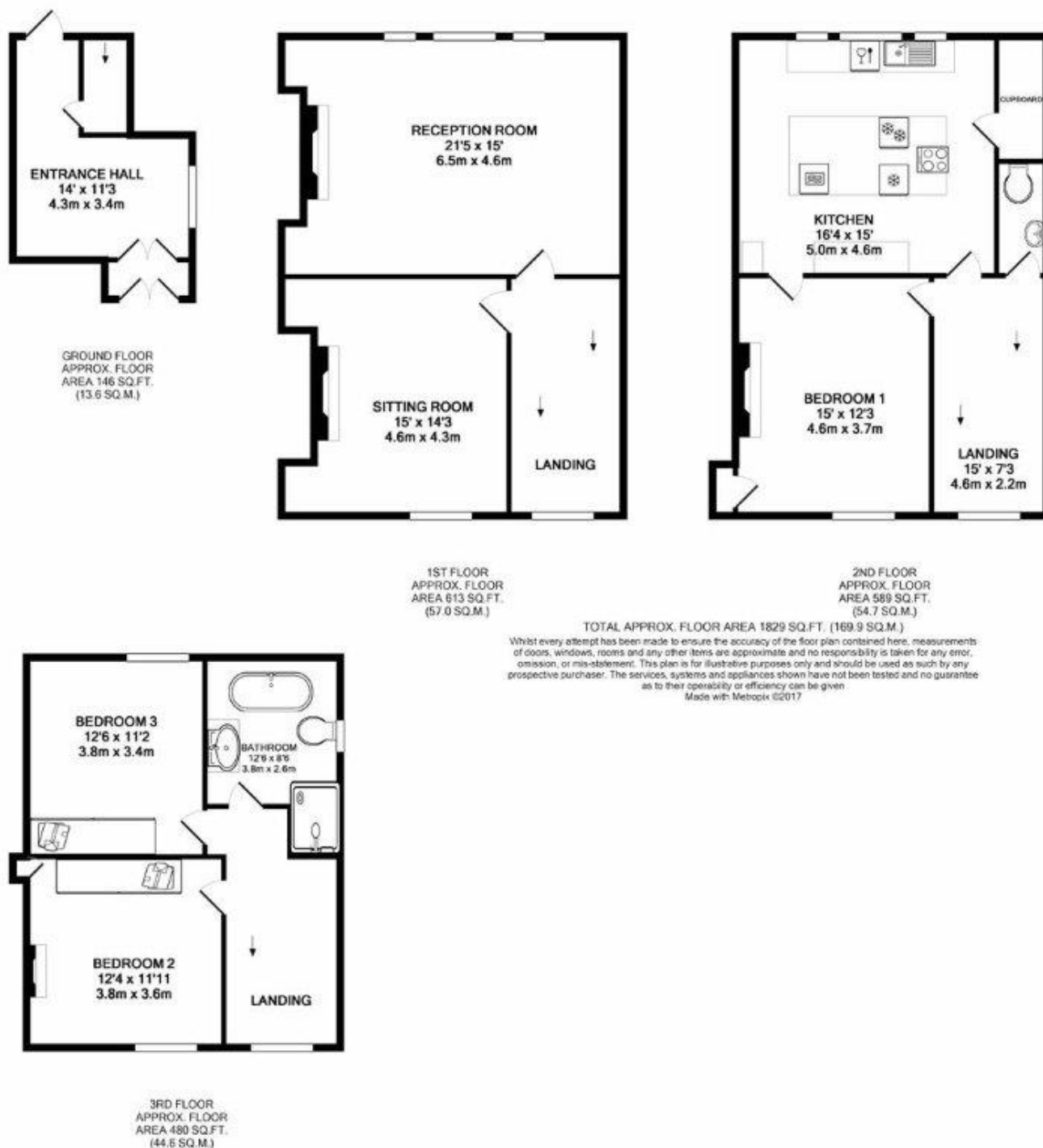
Winkworth

for every step...



Winkworth

for every step...



This floorplan is for illustration purposes only and is not to scale. The position and size of doors, windows, appliances and other features are approximate.

Bath | 01225 829 000 | bath@winkworth.co.uk

Winkworth

for every step...

winkworth.co.uk

Winkworth wishes to inform prospective buyers and tenants that these particulars are a guide and act as information only. All our details are given in good faith and believed to be correct at the time of printing but they don't form part of an offer or contract. No Winkworth employee has authority to make or give any representation or warranty in relation to this property. All fixtures and fittings, whether fitted or not are deemed removable by the vendor unless stated otherwise and room sizes are measured between internal wall surfaces, including furnishings.