



Long Lane, Barnet, London, N2

£375,000 *Share of Freehold*



We are pleased to offer this well presented, one bedroom, first floor flat, located between East Finchley & Finchley Central amenities and transport links.

KEY FEATURES

- First floor flat
- Well presented kitchen & bathroom
- Spacious reception room
- Double bedroom
- Off street parking
- Share of freehold



Finchley

020 8349 3388 | finchley@winkworth.co.uk

Winkworth

for every step...



The property is comprised of a spacious reception room, modern fitted kitchen and bathroom, double bedroom and off-street parking.

Further benefits include a share of the freehold, and potential to expand into the loft - subject to usual consents and permission.

An internal viewing is recommended.

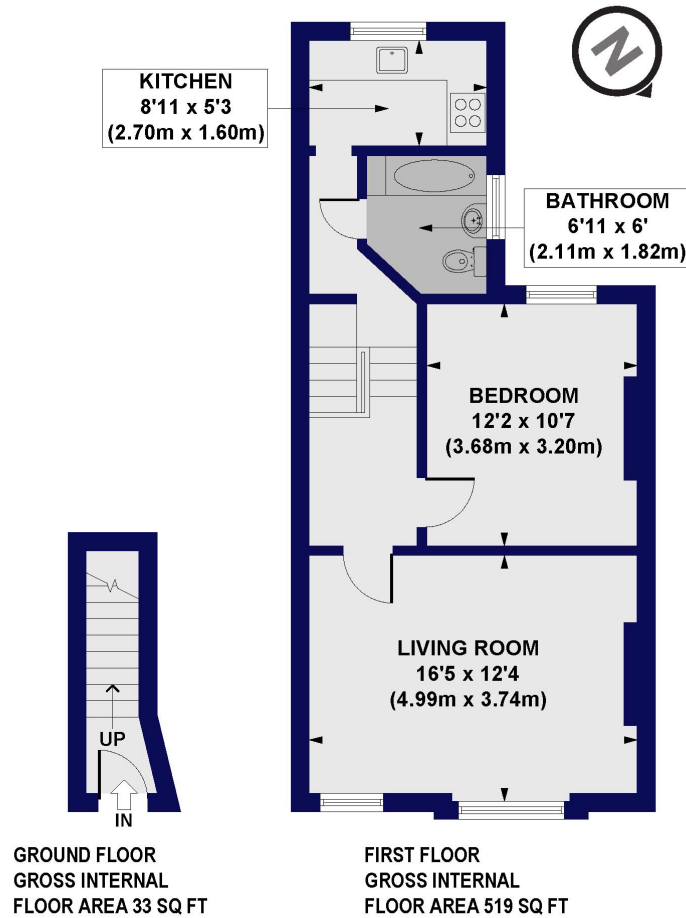




MATERIAL INFO

Tenure: Share of Freehold
Term: 0 year and 0 months
Service Charge: £0 per annum
Ground Rent: £0 Annually (subject to increase)
Council Tax Band: C
EPC rating: C

Long Lane, N2
Approx. Gross Internal Floor Area 552 sq. ft / 51.33 sq. m

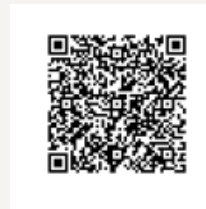


All measurements of walls, doors, windows, fittings and appliances, including their size and location, are shown as standard sizes and do not constitute any warranty or representation by the seller, their agent or CP Creative. Any intending purchaser must satisfy himself by inspection or otherwise as to the correctness of the information contained in these plans. This plan is for illustrative purposes only and should be used as such by any prospective purchasers.

Winkworth

Score	Energy rating	Current	Potential
92+	A		
81-91	B		
69-80	C	72 C	79 C
55-68	D		
39-54	E		
21-38	F		
1-20	G		

For more information, scan the QR code or visit the link below



<https://www.winkworth.co.uk/sale/property/FIN240438>

Where no figures are shown, we have been unable to ascertain the information. All figures that are shown were correct at the time of printing.

Finchley

020 8349 3388 | finchley@winkworth.co.uk

Winkworth

for every step...

Winkworth wishes to inform prospective buyers and tenants that these particulars are a guide and act as information only. All our details are given in good faith and believed to be correct at the time of printing but they don't form part of an offer or contract. No Winkworth employee has authority to make or give any representation or warranty in relation to this property. All fixtures and fittings, whether fitted or not are deemed removable by the vendor unless stated otherwise and room sizes are measured between internal wall surfaces, including furnishings.