



PERRY VALE, LONDON, SE23

£575,000 FREEHOLD

**SPACIOUS, STYLISH & EXCEPTIONALLY LOCATED –
YOUR FOREST HILL HAVEN AWAITS**

Forest Hill | | foresthill@winkworth.co.uk



DESCRIPTION:

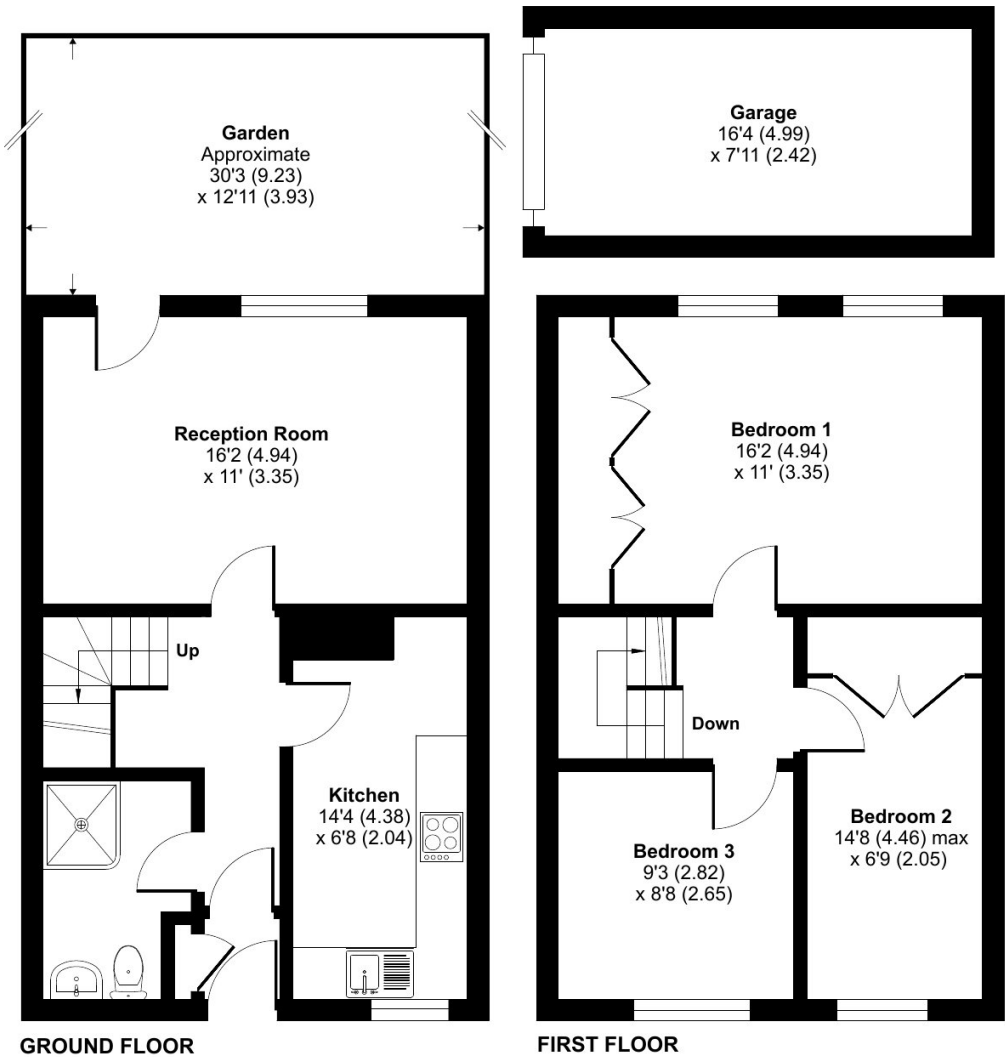
Beautifully presented three double bedroom home in the heart of Forest Hill, featuring a spacious layout, private south-west facing garden, garage, and excellent transport links just 0.3 miles from the station. Surrounded by top-rated schools, green spaces, and vibrant local amenities.





Perry Vale, London, SE23

Approximate Area = 848 sq ft / 78.7 sq m (excludes store)
Garage = 130 sq ft / 12 sq m
Total = 978 sq ft / 90.7 sq m
For identification only - Not to scale



Floor plan produced in accordance with RICS Property Measurement Standards incorporating International Property Measurement Standards (IPMS2 Residential). © nlcocom 2025. Produced for Winkworth Forest Hill and New Cross. REF: 1296263

This floorplan is for illustration purposes only and is not to scale. The position and size of doors, windows, appliances and other features are approximate.

Score	Energy rating	Current	Potential
92+	A		
81-91	B		89 B
69-80	C	73 C	
55-68	D		
39-54	E		
21-38	F		
1-20	G		

Tenure: Freehold