

DRIVE MANSIONS, FULHAM ROAD, SW6 £2,350 PER MONTH

Situated on the lower ground floor of the prestigious Drive Mansions, this beautifully maintained two-bedroom apartment offers generous living space and stylish interiors.

Fulham & Parsons Green | 020 7731 3388 | fulham@winkworth.co.uk

Tenant Fees Apply: Details of fees for tenant referencing, tenancy agreement admin fees and renewal fees are available on the Winkworth website and the link can be found with the displayed rent for the property. Tenants should ensure they are fully conversant with these upfront fees and other costs that are involved at the outset of the tenancy before making an offer to rent and your local Winkworth office will provide written details upon request.

winkworth.co.uk

Winkworth

for every step...



The property boasts a bright and spacious reception room with elegant period features, solid wood flooring, and a charming bay window. There's ample room for both relaxing and entertaining, with space for two sofas and a full-size dining table. The separate contemporary kitchen is well-equipped with a range of modern wall and base units, providing excellent storage and functionality.

Both bedrooms are spacious doubles, each offering ample room for additional furnishings, while the bathroom is sleek and well-finished, featuring a full-size bath with overhead shower and modern tiling.

The property would make the perfect home for professional sharers or a couple.

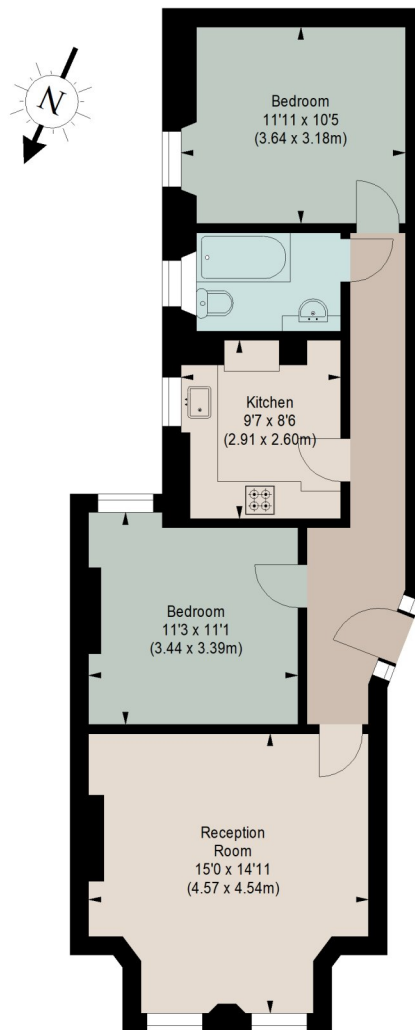
Drive Mansions enjoys a prime location at the Fulham High Street end of Fulham Road, just a short walk from the vibrant amenities of Parsons Green, including boutique shops, cafés, restaurants, and excellent transport links via multiple bus routes.





THE DRIVE MANSIONS, SW6

Approximate gross internal area
700 sq ft / 65.03 sq m



LOWER GROUND FLOOR

The floor plan is not to scale and measurements and areas shown are approximate and therefore should be used for illustrative purposes only. The plan has been prepared in accordance with the RICS code of Measuring Practice and whilst we have confidence in the information produced, it must not be relied on. If there is any aspect of particular importance, you should carry out or commission your own inspection of the property.

This floorplan is for illustration purposes only and is not to scale. The position and size of doors, windows, appliances and other features are approximate.

Fulham & Parsons Green | 020 7731 3388 | fulham@winkworth.co.uk

Winkworth

for every step...

winkworth.co.uk

Winkworth wishes to inform prospective buyers and tenants that these particulars are a guide and act as information only. All our details are given in good faith and believed to be correct at the time of printing but they don't form part of an offer or contract. No Winkworth employee has authority to make or give any representation or warranty in relation to this property. All fixtures and fittings, whether fitted or not are deemed removable by the vendor unless stated otherwise and room sizes are measured between internal wall surfaces, including furnishings.