



Dawson Place, W2

£595 per week (£2,578.33 PCM) *Furnished*



A LOVELY BRIGHT AND SPACIOUS ONE BEDROOM FLAT ON THE THIRD FLOOR OF THIS FANTASTIC PERIOD BUILDING.



Notting Hill Lettings

0207 727 3227 | nottinghill@winkworth.co.uk

Winkworth

for every step...



A lovely newly renovated one-bedroom flat on the third floor of this period building in this highly sought after location. The property benefits from a south facing reception room with fireplace, separate fully fitted kitchen, double bedroom and bathroom. The flat is available fully furnished and viewings highly recommended.

Dawson Place is one of Notting Hill's finest streets. An imposing, residential street running north of Pembridge Square, well located between the amenities and transport links of Notting Hill Gate and Westbourne Grove.

Utilities:

Electricity – Mains

Water – Mains

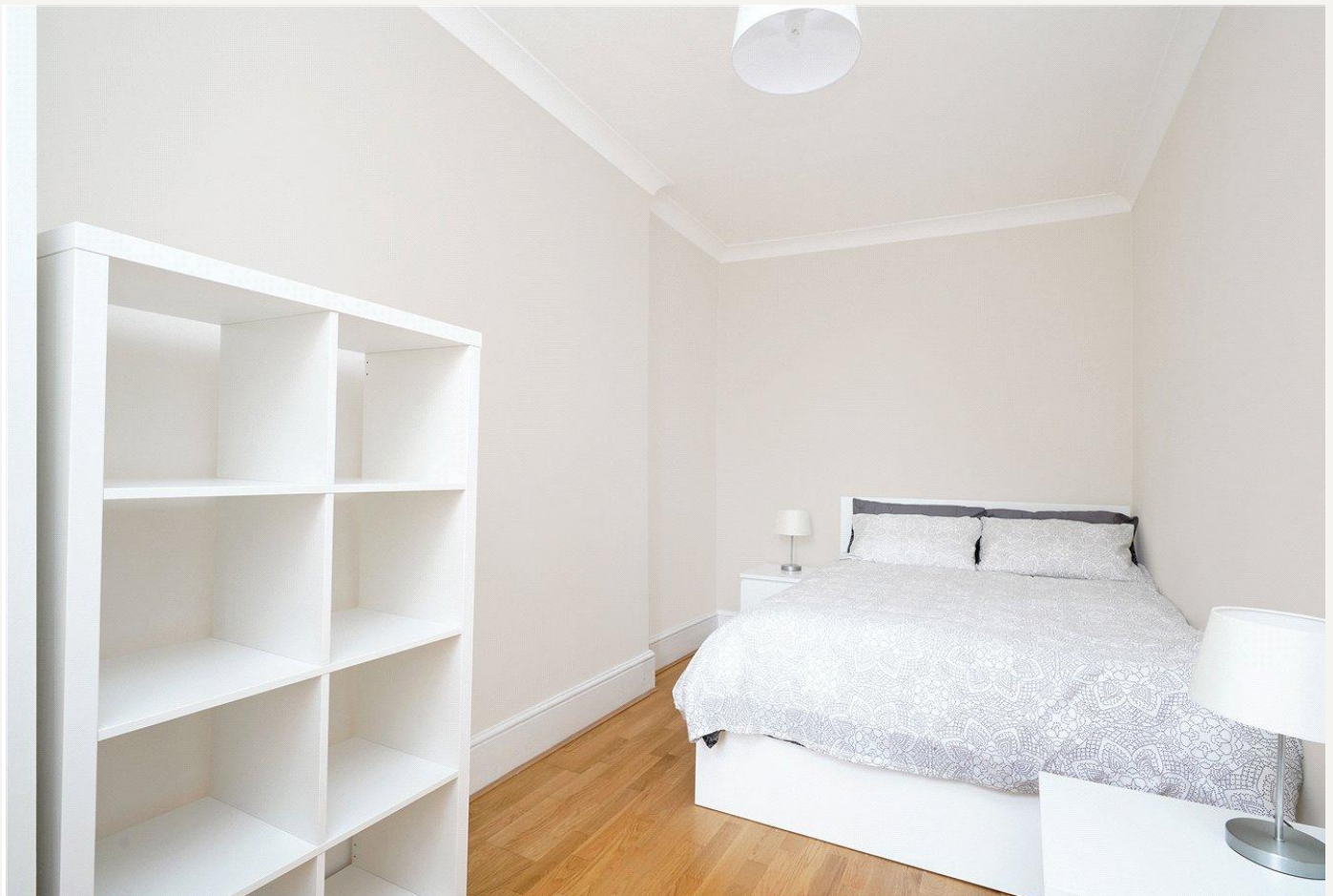
Sewerage – Mains

Heating – Gas

Broadband <https://checker.ofcom.org.uk/en-gb/broadband-coverage>

Mobile Coverage <https://checker.ofcom.org.uk/en-gb/mobile-coverage>





MATERIAL INFO

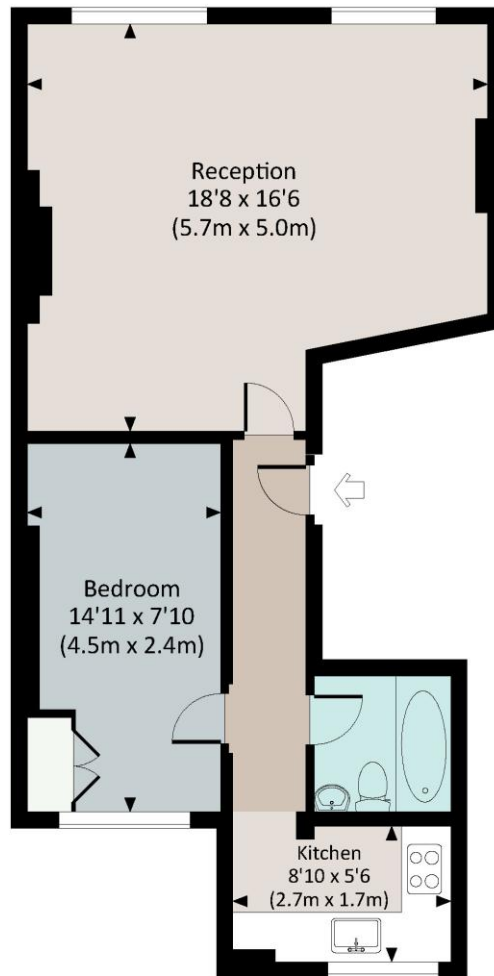
Deposit: £2,975

Holding Deposit: £595

Council Tax Band: D (Westminster)

DAWSON PLACE, W2

Approx. gross internal area
538 Sq.Ft. / 50.0 Sq.M.



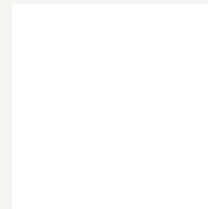
THIRD FLOOR



All measurements have been made in accordance with NICE Code of Measuring Practice which are approximate only and only for illustrative purposes. For the avoidance of doubt, Dowling Jones Design shall not be liable for any reliance on these measurements. © 2017 www.dowlingjones.com 020 7610 9933

Energy Efficiency Rating		
	Current	Potential
Very energy efficient - lower running costs		
(92-100) A		
(81-91) B		
(69-80) C		79
(55-68) D	64	
(39-54) E		
(21-38) F		
(1-20) G		
Not energy efficient - higher running costs		
England, Scotland & Wales	EU Directive 2002/91/EC	

For more information, scan the QR code or visit the link below



<https://www.winkworth.co.uk/rent/property/NHL080027>

Where no figures are shown, we have been unable to ascertain the information. All figures that are shown were correct at the time of printing.

Notting Hill Lettings

0207 727 3227 | nottinghill@winkworth.co.uk

Winkworth

for every step...

Winkworth wishes to inform prospective buyers and tenants that these particulars are a guide and act as information only. All our details are given in good faith and believed to be correct at the time of printing but they don't form part of an offer or contract. No Winkworth employee has authority to make or give any representation or warranty in relation to this property. All fixtures and fittings, whether fitted or not are deemed removable by the vendor unless stated otherwise and room sizes are measured between internal wall surfaces, including furnishings.