



121A, WESTWOOD PARK, LONDON, SE23  
**£475,000**

Forest Hill | | [foresthill@winkworth.co.uk](mailto:foresthill@winkworth.co.uk)





### DESCRIPTION:

This ground floor apartment offers a great opportunity for buyers looking to put their own stamp on a property. Featuring two well-proportioned double bedrooms, a separate kitchen and a private garden, it provides a solid foundation for comfortable living in a popular and convenient location.





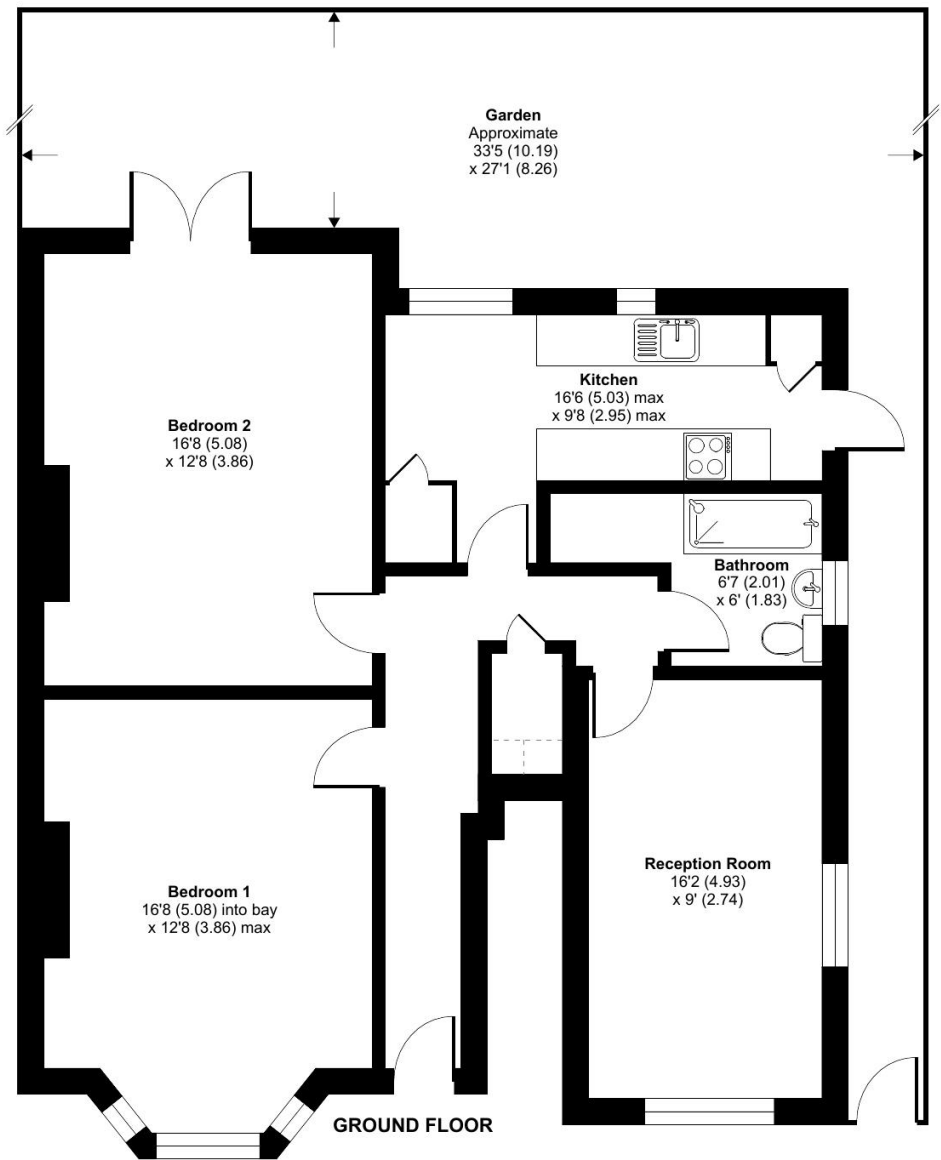


Westwood Park, London, SE23

Approximate Area = 870 sq ft / 80.8 sq m  
Limited Use Area(s) = 3 sq ft / 0.3 sq m  
Total = 873 sq ft / 81.1 sq m  
For identification only - Not to scale



Denotes restricted head height



Floor plan produced in accordance with RICS Property Measurement Standards incorporating International Property Measurement Standards (IPMS2 Residential). © n/checom 2025.  
Produced for Winkworth Forest Hill and New Cross. REF: 1329011

This floorplan is for illustration purposes only and is not to scale. The position and size of doors, windows, appliances and other features are approximate.

Score	Energy rating	Current	Potential
92+	A		
81-91	B		
69-80	C		
55-68	D	68 D	78 C
39-54	E		
21-38	F		
1-20	G		