



VICTORIA CHAMBERS, LUKE STREET, EC2A
£400,000 SHARE OF FREEHOLD

Winkworth



LUKE STREET, EC2A

Sold with a share of the freehold this nicely configured two bedroom apartment is situated in a Victorian mansion block.

This property is for cash buyers only as it is in need of a full renovation, there is no bathroom fitted and only part of an old kitchen

Victoria Chambers is conveniently located on a quiet street in the heart of Shoreditch and the City fringe. The apartment benefits from access to the array of coffee shops, bars and restaurants whilst also being a short walk to Spitalfields Market, Liverpool Street, for the Elizabeth Line, and Old Street.

Tenure: Share of Freehold

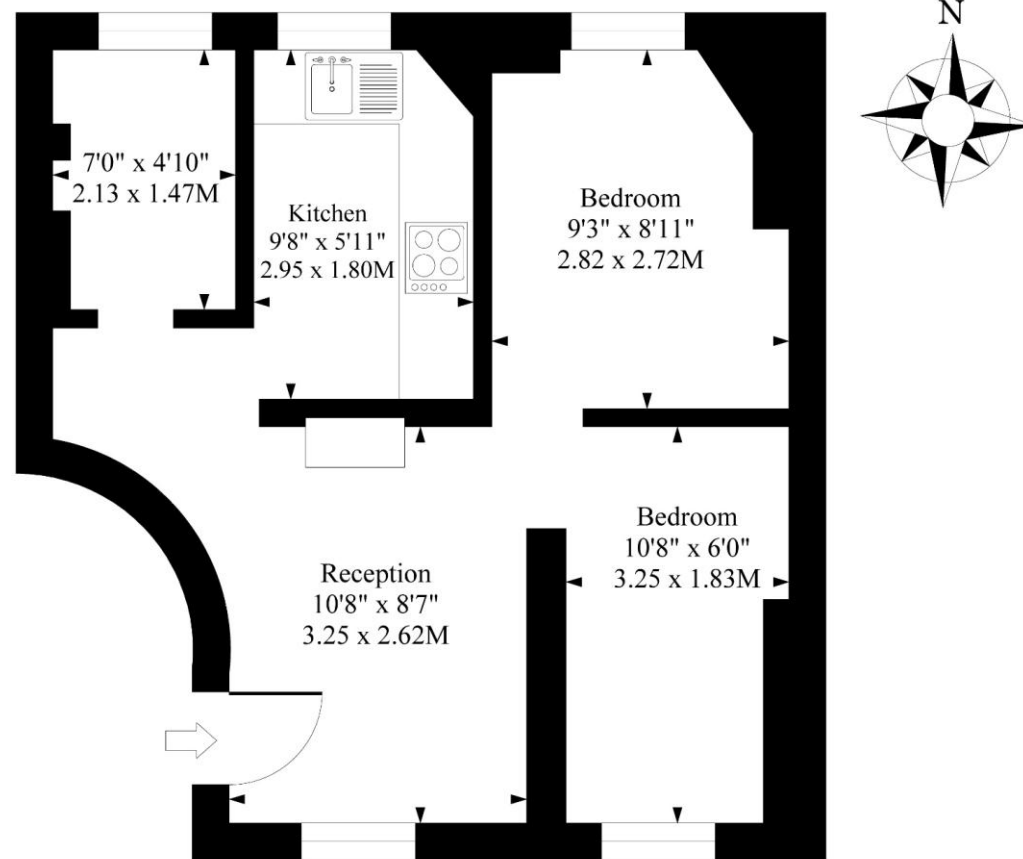
Service Charge: approx. £1,700p/a

Council tax band: C





Victoria Chambers, Luke St, EC2A



Third Floor

Approximate Gross Internal Area 441 Sq Ft - 41.00 Sq M

Measured in according with RICS guidelines. Every attempt is made to ensure accuracy
However all measurements are approximate.
The floor plan is illustrative purposes only and is not to scale

Clerkenwell & City | 020 7405 1288 | clerkenwell@winkworth.co.uk

winkworth.co.uk

Winkworth wishes to inform prospective buyers and tenants that these particulars are a guide and act as information only. All our details are given in good faith and believed to be correct at the time of printing but they don't form part of an offer or contract. No Winkworth employee has authority to make or give any representation or warranty in relation to this property. All fixtures and fittings, whether fitted or not are deemed removable by the vendor unless stated otherwise and room sizes are measured between internal wall surfaces, including furnishings.

Winkworth