



STUDIO WAY, HERTFORDSHIRE, WD6

£540,000 FREEHOLD

**A MODERN THREE BEDROOM, TWO BATHROOM,
THREE STOREY FAMILY TOWN HOUSE.**

Borehamwood | 020 8953 8899 | borehamwood@winkworth.co.uk



Winkworth

DESCRIPTION:

Constructed approx. nine years ago by the highly regarded developers Linden Homes is this three bedroom family town house.

Arranged over three floors the accommodation totals circa 1250 square feet and comprises kitchen /diner, guest wc, and integral garage on the ground floor, reception and double bedroom on the first floor and master bedroom with ensuite shower room, third bedroom and family bathroom on the upper floor.

To the rear is low maintenance, paved and secluded garden and nearby an additional allocated parking space

AT A GLANCE

- Three Bedrooms
- 1242 Square Feet
- Two Bathrooms
- Guest Cloakroom
- Integral Garage and Additional Parking Space
- NHBC Warranty
- Quiet Location



Winkworth



Winkworth



Approximate Gross Internal Area
(Including Garage)
115.4 sq m / 1242 sq ft

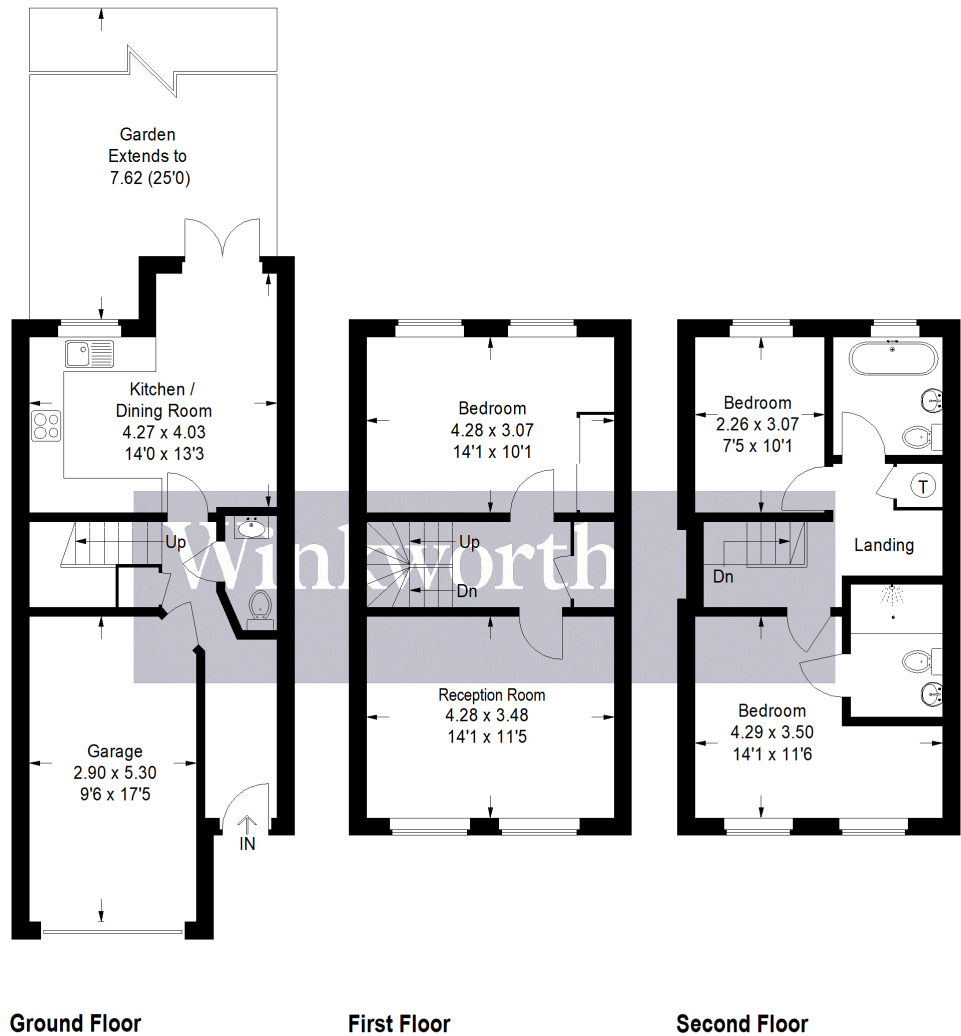


Illustration for identification purposes only, measurements are approximate,
not to scale. Winkworth © 2021 (ID 813932)

This floorplan is for illustration purposes only and is not to scale. The position and size of doors, windows, appliances and other features are approximate.

Score	Energy rating	Current	Potential
92+	A		95 A
81-91	B	84 B	
69-80	C		
55-68	D		
39-54	E		
21-38	F		
1-20	G		

Tenure: Freehold

Term: 0 year and 0 months

Service Charge: £318.16 per annum

Ground Rent: £ 0 Annually (subject to increase)

Council Tax Band: E

Where no figures are shown, we have been unable to ascertain the information. All figures that are shown were correct at the time of printing.