



RIVERSIDE HOUSE, READING, BERKSHIRE, RG1 6BJ
£2,100 PER MONTH FURNISHED

LARGE THREE BEDROOM TOWN CENTRE APARTMENT OVERLOOKING THE KENNET & AVON CANAL

Reading | 0118 4022 300 | reading@winkworth.co.uk

Winkworth

for every step...

winkworth.co.uk

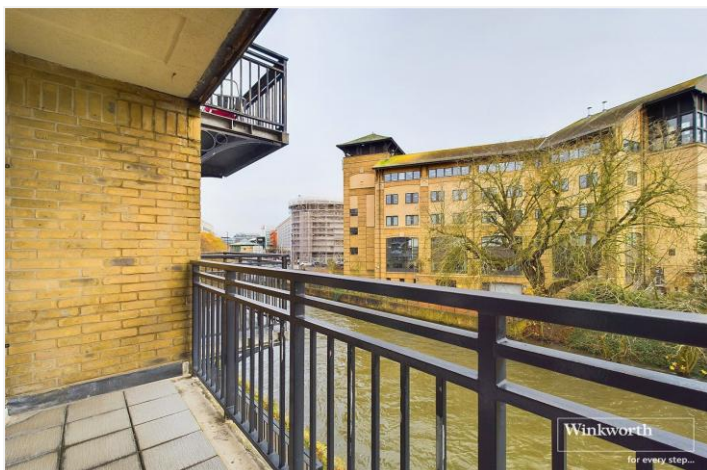


DESCRIPTION:

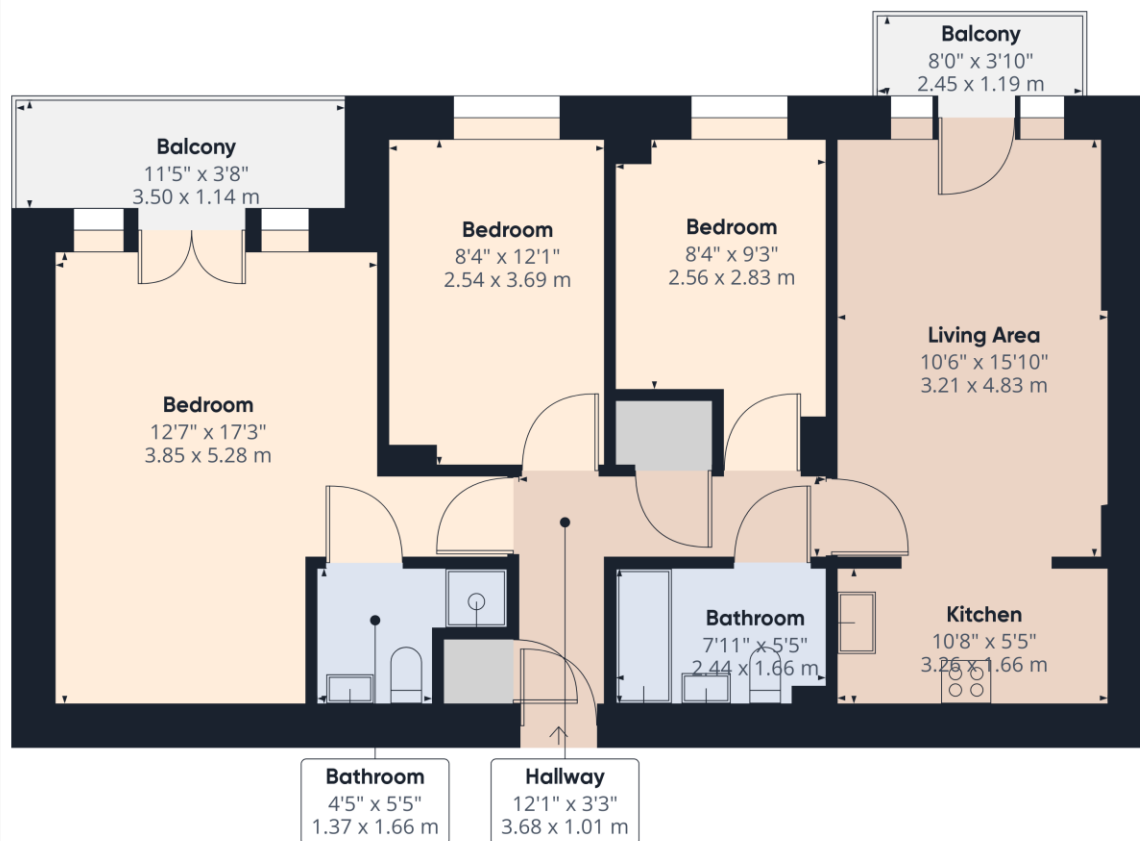
Three double bedroom apartment with two private balconies overlooking the Kennet & Avon canal. The property is located in Reading Town Centre next to the Oracle Shopping Centre. Internally the apartment comprises three large bedrooms, an open plan living dining room leading into the kitchen with fitted appliances, two bathrooms including an ensuite to the master and two balconies off the master bedroom and living area. Benefits also include an intercom system and secure allocated parking space. Available 3rd July 2025. Furnished.

AT A GLANCE

- Three Double Bedrooms
- Two Bathrooms
- Two Riverside Balconies
- Council tax band D
- Undercroft Parking Space
- Available 3rd July
- Furnished







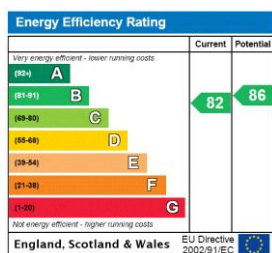
Approximate total area¹⁾
809.12 ft²
75.17 m²

Excluding balconies and terraces

While every attempt has been made to ensure accuracy, all measurements are approximate, not to scale. This floor plan is for illustrative purposes only.

GIRAFFE 360

This floorplan is for illustration purposes only and is not to scale. The position and size of doors, windows, appliances and other features are approximate.



Deposit: £2,423.08

Holding Deposit: £484.61

Council Tax Band: D

Where no figures are shown, we have been unable to ascertain the information. All figures that are shown were correct at the time of printing.

Reading | 0118 4022 300 | reading@winkworth.co.uk

Winkworth

for every step...

winkworth.co.uk

Winkworth wishes to inform prospective buyers and tenants that these particulars are a guide and act as information only. All our details are given in good faith and believed to be correct at the time of printing but they don't form part of an offer or contract. No Winkworth employee has authority to make or give any representation or warranty in relation to this property. All fixtures and fittings, whether fitted or not are deemed removable by the vendor unless stated otherwise and room sizes are measured between internal wall surfaces, including furnishings.