



17 SPEEDWELL WAY

THATCHAM RG18 4EG

A fantastic four bedroom detached family home with off street parking, integral garage, generous rear garden and three reception rooms.

As you enter the property, the living room is to your right. The room is flooded with natural light from the beautiful bay window. The dining room is a great open space with access to both the kitchen and conservatory. The kitchen consists of navy cabinets and a neutral worktop with access to the integral garage. The conservatory provides access onto the rear garden.

Upstairs are four great sized bedrooms. Rooms one, two and four all benefit from built in storage. The master suite also benefits from an en-suite. The family bathroom consist of a shower over the bath and light grey tiles, with a wood effect floor.

To the front of the property there is driveway parking for two cars and a single garage. To the rear is a great sized garden with a patio area at the back. The rest of the garden is mainly laid to lawn.



Winkworth

AT A GLANCE

- 1221ft² / 113m²
- Living Room
- Dining Room
- Kitchen
- Conservatory
- Four Bedrooms
- En-suite in Master
- Family Bathroom
- Generous Rear Garden
- Garage
- Driveway

UTILITIES

The property is connected to all mains and operates on gas central heating. The house also benefits from air conditioning. There is Ultrafast broadband available in the area and there are no known mobile coverage issues.

EPC - C
West Berkshire Council Tax Band - E

DIRECTIONS

[What3words///tenses.worldwide.index](https://www.what3words.com/tenses.worldwide.index)

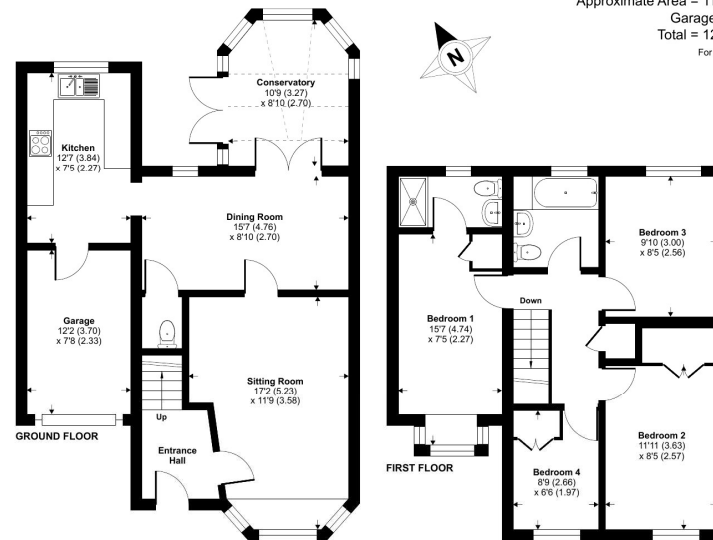
Speedwell Way, Thatcham, RG18

Approximate Area = 1128 sq ft / 104.7 sq m

Garage = 93 sq ft / 8.6 sq m

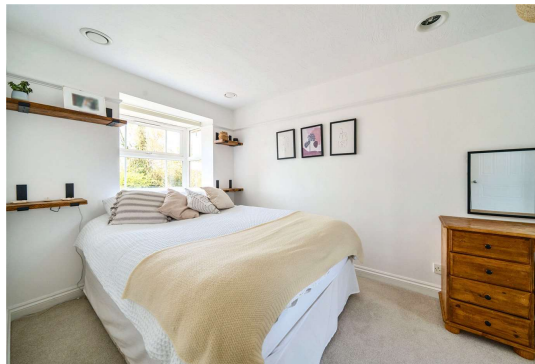
Total = 1221 sq ft / 113.3 sq m

For identification only - Not to scale



Floor plan produced in accordance with RICS Property Measurement 2nd Edition, Incorporating International Property Measurement Standards (IPMS2 Residential). © nidecom 2025. Produced for Winkworth. REF: 1271008

Winkworth



Newbury Office

43 Northbrook Street, Newbury, Berkshire RG14 1DT
01635 552552 | newbury@winkworth.co.uk

[winkworth.co.uk/newbury](https://www.winkworth.co.uk/newbury)

Winkworth

See things differently.