



GOWERS WALK, LONDON, E1
£1,000,000 LEASEHOLD

FANTASTIC LIVE/WORK UNIT WITH SECURE UNDERGROUND PARKING OPPOSITE GOODMAN'S FIELD

Shoreditch | 020 7749 7650 | shoreditch@winkworth.co.uk

Winkworth

winkworth.co.uk

See things differently



DESCRIPTION:

Situated on the ground floor with own private entrance is this substantial live/work unit which forms part of the Chandlery Development. The property comprises 5 office spaces plus living quarters, bathroom, sperate kitchen and access to communal courtyard. The property also includes two secure underground parking spaces and is being sold chain free.

Situated on Gowers Walk, opposite the brand-new Goodman's Field development, the property offers numerous transport options including Aldgate, Aldgate East and Whitechapel (Crossrail) underground stations which are all within easy walking distance. There is also a wealth of local amenities on your doorstep with Brick Lane and Spitalfields markets with their boutique shops, cafes, bars and restaurants.

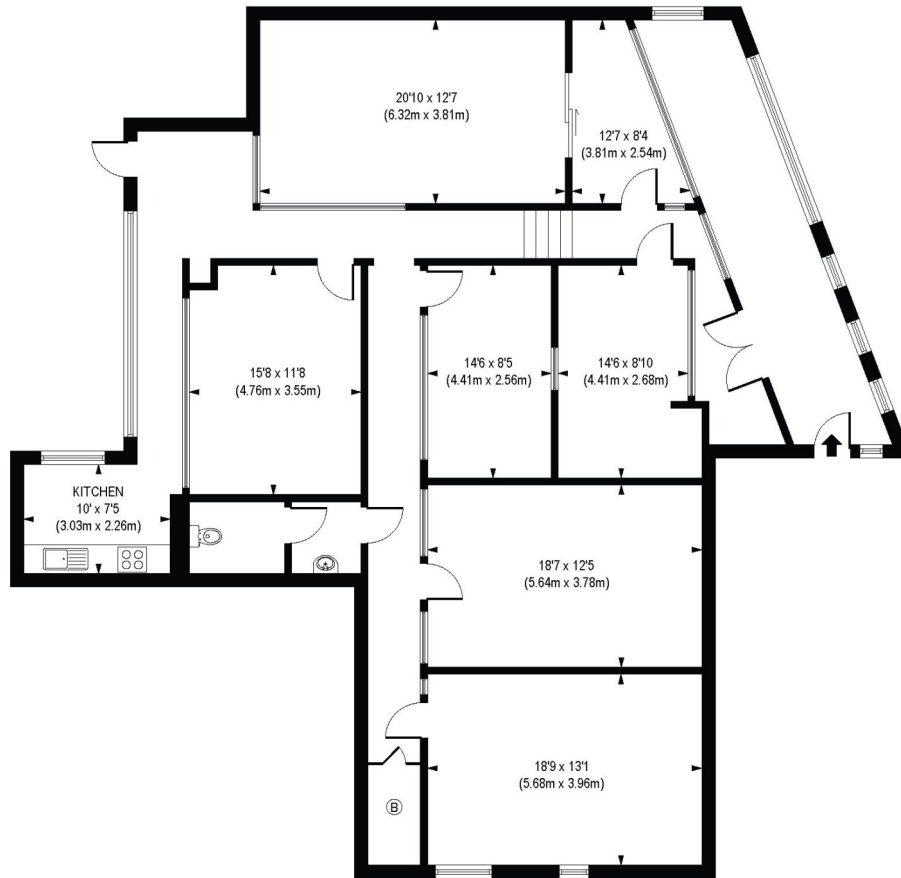
Winkworth



Winkworth

Gowers Walk, E1

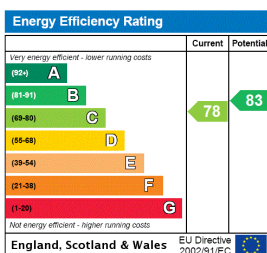
Approx. Gross Internal Floor Area 2107 sq. ft / 195.78 sq. m



Ground Floor

COMPLIANT WITH RICS CODE OF MEASURING PRACTICE. Floorplan is for illustrative purposes only and is not to scale. Every attempt has been made to ensure the accuracy of the floorplan shown, however all measurements, fixtures, fittings and data shown are an approximate interpretation for illustrative purposes only. Liability for errors, omissions or mis-statement through negligence or otherwise is hereby excluded.

This floorplan is for illustration purposes only and is not to scale. The position and size of doors, windows, appliances and other features are approximate.



<https://www.winkworth.co.uk/sale/property/SHO190482>

Tenure: Leasehold

Term: 98 year and 9 months

Service Charge: £1000 per annum

Ground Rent: £ 200 Annually (subject to increase)

Council Tax Band: D

Where no figures are shown, we have been unable to ascertain the information. All figures that are shown were correct at the time of printing.

Shoreditch | 020 7749 7650 | shoreditch@winkworth.co.uk

Winkworth

[winkworth.co.uk](https://www.winkworth.co.uk)

See things differently

Winkworth wishes to inform prospective buyers and tenants that these particulars are a guide and act as information only. All our details are given in good faith and believed to be correct at the time of printing but they don't form part of an offer or contract. No Winkworth employee has authority to make or give any representation or warranty in relation to this property. All fixtures and fittings, whether fitted or not are deemed removable by the vendor unless stated otherwise and room sizes are measured between internal wall surfaces, including furnishings.