



CABLE WALK, GREENWICH, LONDON, SE10  
**£380,000 LEASEHOLD**

**A BEAUTIFULLY PRESENTED ONE BEDROOM FIRST FLOOR APARTMENT, THAT MEASURES CIRCA 528 SQ FT AND IS PERFECTLY LOCATED IN THIS POPULAR RIVERSIDE DEVELOPMENT, LOCATED CLOSE TO THE TOWN CENTRE AND O2 ARENA! EWS1 COMPLIANT!**

Greenwich | 02030533033 | [greenwich@winkworth.co.uk](mailto:greenwich@winkworth.co.uk)

**Winkworth**

*winkworth.co.uk*

See things differently





## DESCRIPTION:

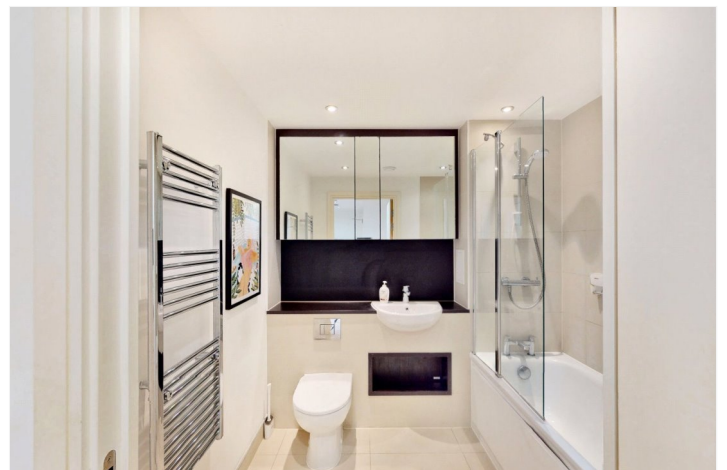
A beautifully presented one bedroom first floor apartment, that measures circa 528 sq ft and is perfectly located in this popular riverside development, located close to the town centre and O2 arena! EWS1 COMPLIANT!

In superb order throughout the property comprises a large 17ft reception room, with an open plan kitchen that includes all the usual fitted white goods one would expect. This room then leads onto a covered balcony that overlooks the communal grounds. There is a large 18ft double bedroom with fitted wardrobes and a lovely modern family bathroom. Along with excellent storage, added benefits include a 24 hour concierge service and a superb communal gymnasium on site!

As mentioned, Enderby Wharf, is an incredibly popular development that sits adjacent to the river walk and is located on the divide of West and East Greenwich. The town centre offers a wonderful array of shops and restaurants, along with mainline rail, riverboat service and DLR. The Royal Park, with its Observatory is also close by.

## AT A GLANCE

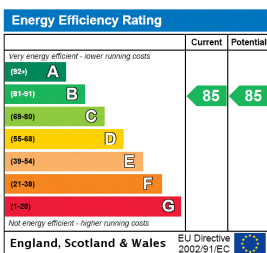
- one bedroom apartment
- first floor
- circa 528 sq ft
- covered balcony
- 17ft kitchen diner
- large double bedroom
- excellent storage
- modern bathroom
- communal grounds
- 24 hour concierge
- communal gymnasium







This floorplan is for illustration purposes only and is not to scale. The position and size of doors, windows, appliances and other features are approximate.



Greenwich | 02030533033 | greenwich@winkworth.co.uk



winkworth.co.uk

See things differently

Winkworth wishes to inform prospective buyers and tenants that these particulars are a guide and act as information only. All our details are given in good faith and believed to be correct at the time of printing but they don't form part of an offer or contract. No Winkworth employee has authority to make or give any representation or warranty in relation to this property. All fixtures and fittings, whether fitted or not are deemed removable by the vendor unless stated otherwise and room sizes are measured between internal wall surfaces, including furnishings.