



CRUIKSHANK STREET, LONDON, WC1X  
£1,250,000 SHARE OF FREEHOLD

Winkworth





## CRUIKSHANK STREET, WC1X

**A stunning three bedroom, two bathroom maisonette boasting spacious accommodation combined with well-presented and stylish décor throughout.**

Situated on a quiet residential street it also benefits from a private garden area at the rear.

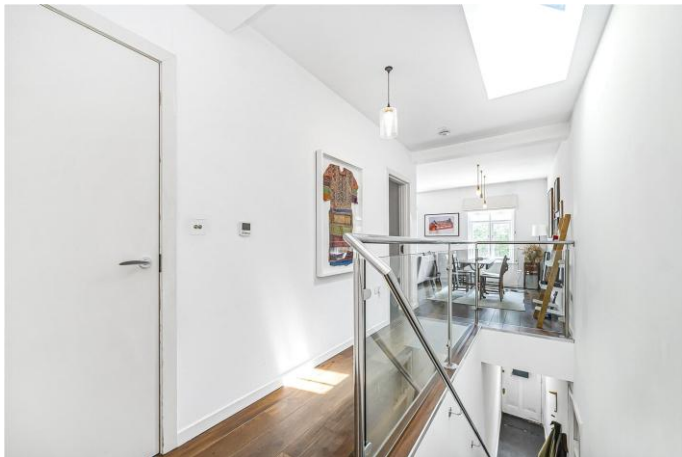
Cruikshank Street is ideally located for a wide array of amenities on Amwell Street, as well as the popular Exmouth Market. Farringdon and Kings Cross Stations are a short walk away.

Share of Freehold

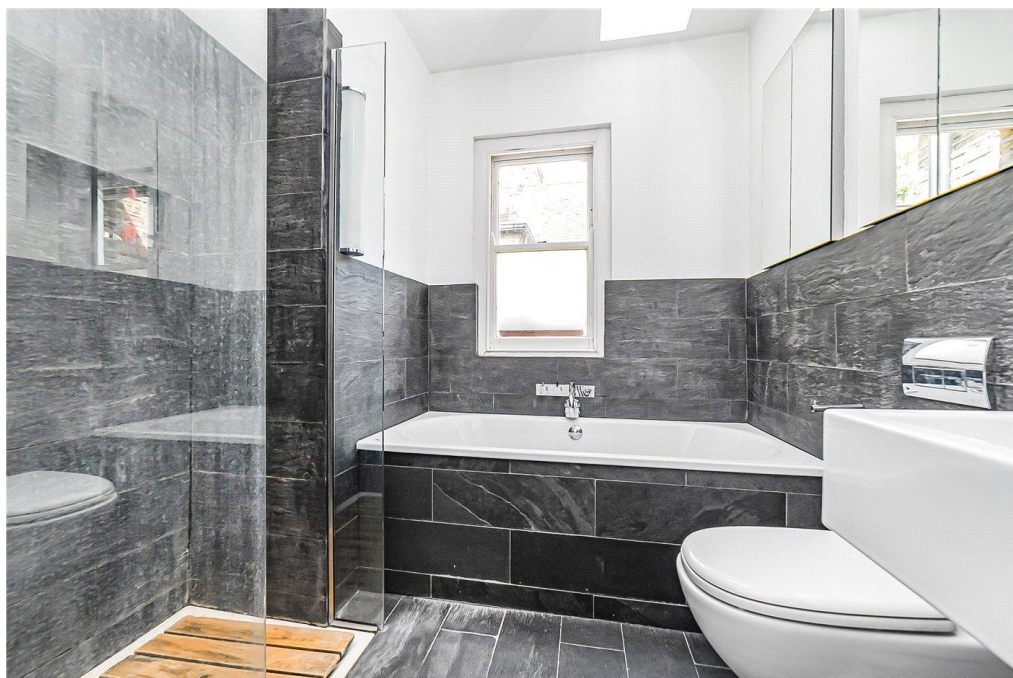
Service Charge: Ad-Hoc

Council Tax Band: E

EPC Rating: E









# Cruikshank Street, WC1X

Approximate Gross Internal Area = 120 sq m / 1292 sq ft



FLOORPLANZ © 2014  
0845 6344080 Ref 128529  
This plan is for layout guidance only.  
Drawn in accordance with  
RICS guidelines. Not drawn to  
scale, unless stated. Windows &  
door openings are approximate.  
Whilst every care is taken in the  
preparation of this plan, please check  
all dimensions, shapes & compass  
bearings before making any  
decisions reliant upon them.

Clerkenwell & City | 020 7405 1288 | Clerkenwell@winkworth.co.uk

winkworth.co.uk

Winkworth wishes to inform prospective buyers and tenants that these particulars are a guide and act as information only. All our details are given in good faith and believed to be correct at the time of printing but they don't form part of an offer or contract. No Winkworth employee has authority to make or give any representation or warranty in relation to this property. All fixtures and fittings, whether fitted or not are deemed removable by the vendor unless stated otherwise and room sizes are measured between internal wall surfaces, including furnishings.

**Winkworth**