



SEELY ROAD, SW17  
**£850,000 FREEHOLD**

## AN EXCEPTIONAL AND EXTENSIVELY RENOVATED FOUR-BEDROOM FAMILY HOUSE ARRANGED OVER THREE FLOORS

Tooting | 020 8767 5221 | [tooting@winkworth.co.uk](mailto:tooting@winkworth.co.uk)

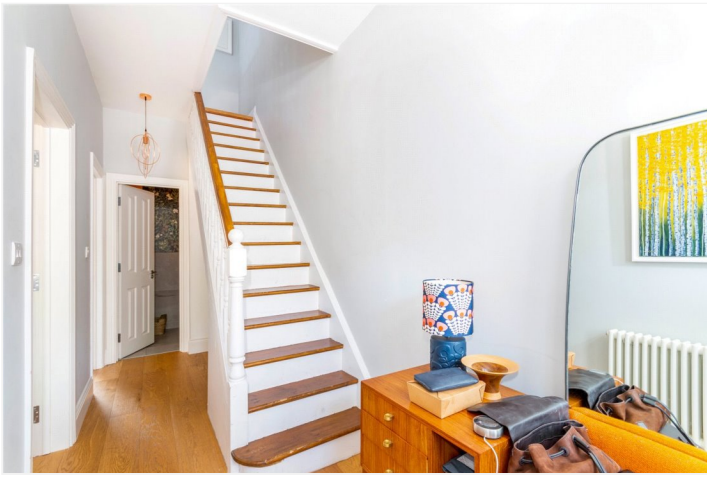


#### **DESCRIPTION:**

**An exceptional and extensively renovated four-bedroom family house arranged over three floors. The property has been meticulously renovated to the highest standard offering three wonderful double bedrooms and a further smaller bedroom. The master bedroom at the top of the house as an impressive en-suite shower room and beautiful built in bespoke cupboards. On the first floor there is a family bathroom.**

**A fabulous shaker style kitchen/dining room with large bi-folding doors leading to the immaculately presented garden. Off the kitchen is a utility room and understairs cloakroom. To the front of the house is a separate large reception room with a wonderful large bay window.**

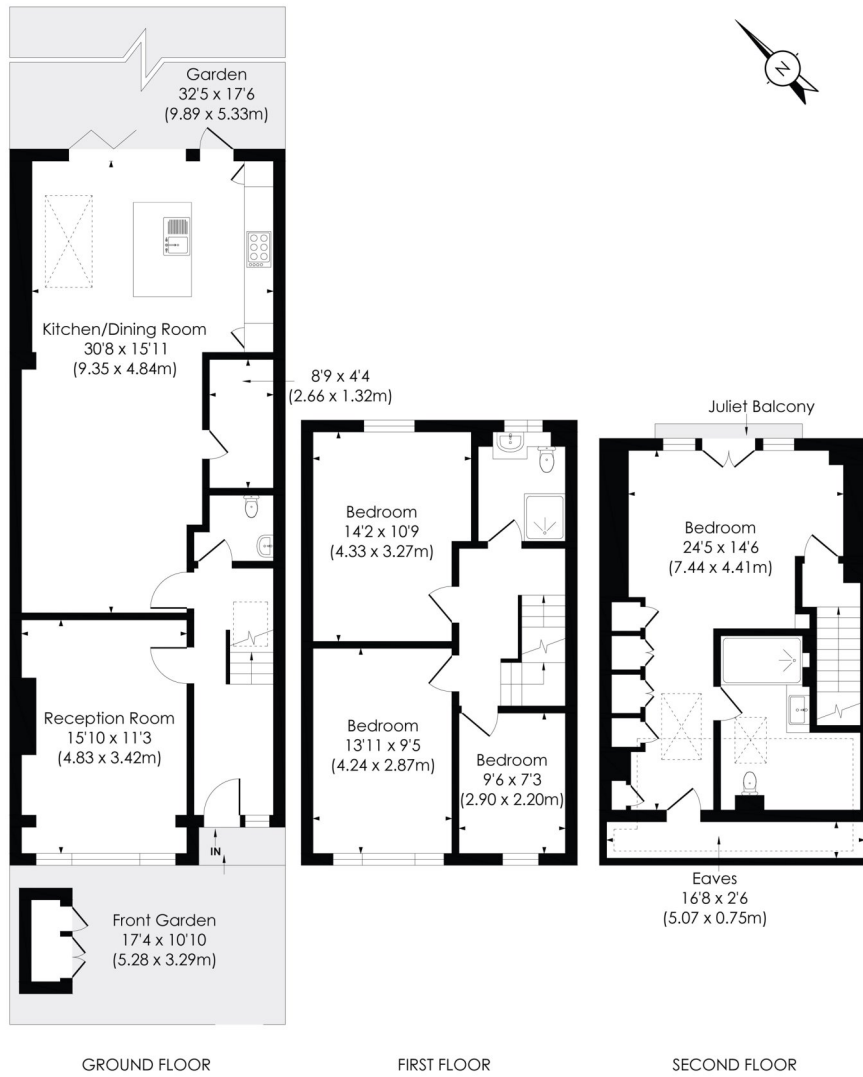
**Seely Road is in the much sought-after catchment of Graveney school. A short walk away from Tooting National Rail station (City Thameslink) and Tooting Broadway (Northern line, Zone 3). It is also perfectly situated for access to Tooting's many bars, restaurants and amenities, as well as St George's hospital and university.**



# SEELY ROAD, SW17

Approx. Gross Internal Floor Area

**1723 Sq. ft/160.05 Sq. m**  
(Including Eaves)



© Pixangle Property Marketing Ltd. info@pixangle.com Tel: 0208 870 2118



This floor plan has been prepared for the purpose of illustration only in accordance with the latest RICS code of measuring practice and is not to scale. All measurements and areas are approximate and whilst every effort has been made to ensure the accuracy of the plan contained here, no responsibility is taken for any error, omission or misstatement.

This floorplan is for illustration purposes only and is not to scale. The position and size of doors, windows, appliances and other features are approximate.

