



PETHERTON ROAD, LONDON, N5
£750,000 SHARE OF FREEHOLD

CHARMING 2 BEDROOM PERIOD CONVERSION WITH PRIVATE GARDEN

Highbury | 0207 989 7000 | highbury@winkworth.co.uk

Winkworth

winkworth.co.uk

See things differently



DESCRIPTION:

A stunning and spacious 867 sqft. two-bedroom period conversion with South - East facing garden situated on the raised ground floor of this Victorian Villa located on a tree lined road in Highbury.

This double fronted charming flat provides great space and light, boasting high ceilings with large sash-windows and comprising; spacious reception room with bright kitchen; two generously sized bedrooms with both benefitting from charming French doors giving access directly to the private terrace and mature rear garden; both also offer tranquil views of this private space. The family bathroom with bath and separate overhead shower completes the internal accommodation. The rear private garden is a real bonus feature of this property, and it offers the new owner a chance to create their own oasis on one of Highbury's premier locations.

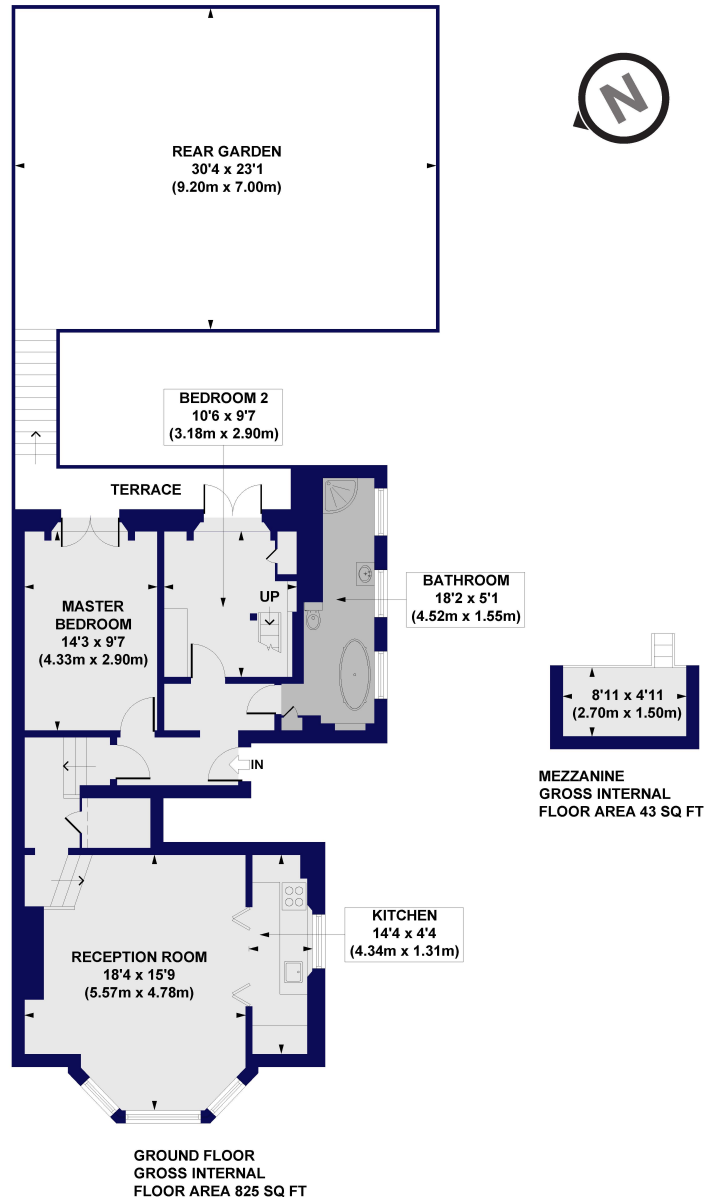
Petherton Road is set just moments from the prestigious Highbury Barn and Newington Green. The property is seconds away from the highly renowned local amenities, including Godfreys butchers, La Fromagerie, Da Mario's Deli, Bournes Fishmongers and Highbury Vintners all of which are hugely popular with locals as well as drawing those from further afield. Aside from its prestigious location the property is close to a range of neighbouring schools all of which have Outstanding Ofsted. The green open space of Highbury Fields and Newington Green are only a short walk away. Transport links are well serviced by a selection of good bus routes as well as Canonbury Station

Winkworth



Winkworth

Petherton Road, N5
Approx. Gross Internal Floor Area 867 sq. ft / 80.72 sq. m



All measurements of walls, doors, windows, fittings and appliances, including their size and location, are shown as standard sizes and do not constitute any warranty or representation by the seller, their agent or CP Creative. Any intending purchaser must satisfy himself by inspection or otherwise as to the correctness of the information contained in these plans. This plan is for illustrative purposes only and should be used as such by any prospective purchasers.

Winkworth

This floorplan is for illustration purposes only and is not to scale. The position and size of doors, windows, appliances and other features are approximate.

Highbury | 0207 989 7000 | highbury@winkworth.co.uk

Winkworth

winkworth.co.uk

See things differently

Winkworth wishes to inform prospective buyers and tenants that these particulars are a guide and act as information only. All our details are given in good faith and believed to be correct at the time of printing but they don't form part of an offer or contract. No Winkworth employee has authority to make or give any representation or warranty in relation to this property. All fixtures and fittings, whether fitted or not are deemed removable by the vendor unless stated otherwise and room sizes are measured between internal wall surfaces, including furnishings.