



GERALDINE ROAD, W4  
**£850,000 FREEHOLD**

## A TWO BEDROOM END OF TERRACE ON STRAND ON THE GREEN

Chiswick | 020 8994 7096 | [chiswick@winkworth.co.uk](mailto:chiswick@winkworth.co.uk)

**Winkworth**

for every step...

[winkworth.co.uk](http://winkworth.co.uk)



## DESCRIPTION:

A bright and airy residence ideally situated on Strand on the Green, Chiswick. Ideally situated for a host of state and private schools.

The well-proportioned accommodation comprises a through open plan lounge/dining area with front aspect window and a pretty feature fireplace and stripped wood floor - a great space for relaxing and entertaining with direct access to the Westerly aspect rear garden/courtyard and the compact kitchen. There are two double bedrooms and a modern family bathroom to the first floor with a loft space which could be vastly improved to allow for a larger extension, subject to the usual consents although precedent has been set many times within the direct vicinity.

Geraldine Road is a much sought after road and is just moments from a great choice of eateries and shops along this picturesque stretch of the river Thames. Gunnersbury Station (Zone 3), District Line and Overground station plus Kew Bridge (National Rail) stations are within proximity which makes this location perfect for the smart commuter. The motorist will benefit from having the A4/M4 close by for access to London, Heathrow Airport and the West Country and South coast. Offered with no onward chain. Viewing is highly recommended.

## ACCOMMODATION

Three Bedrooms

Open Plan Living/Dining Room

Westerly Aspect Rear Garden

Modern Bathroom

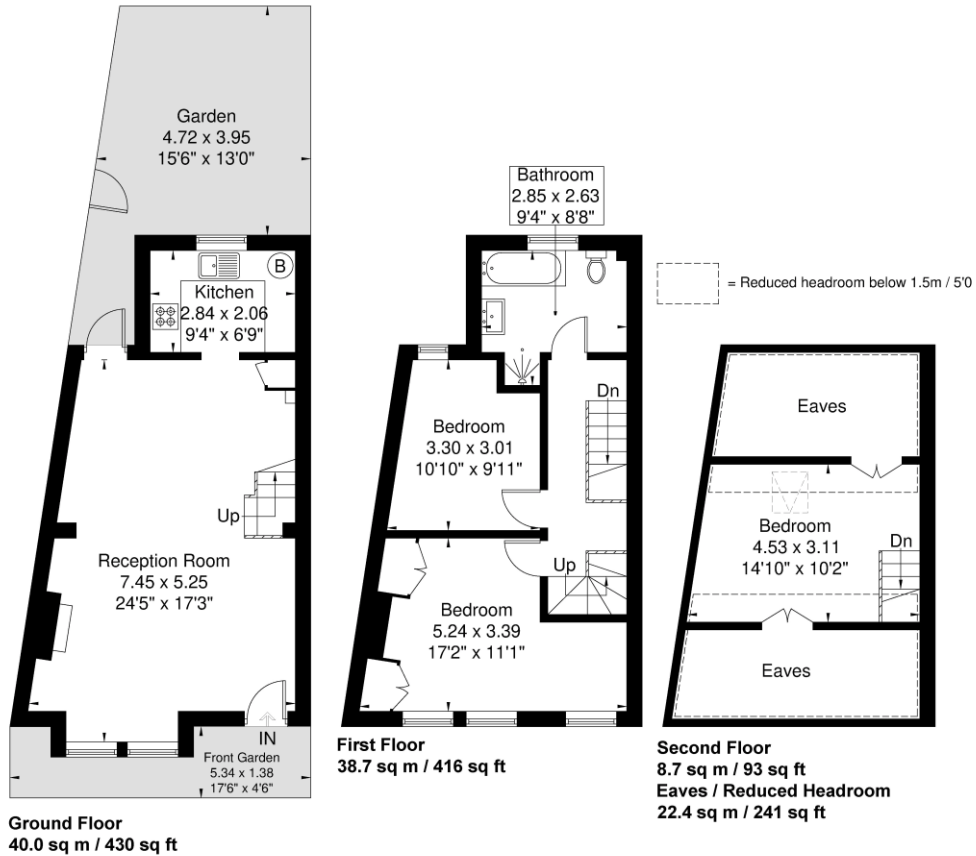
Scope to further Extend (STPP)

No Onward Chain



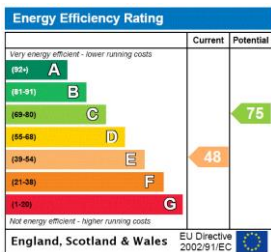
# Geraldine Road

Approximate Gross Internal Area = 87.4 sq m / 941 sq ft  
 Eaves / Storage / Reduced Headroom = 22.4 sq m / 241 sq ft  
 Total = 109.8 sq m / 1182 sq ft



Although every attempt has been made to ensure accuracy, all measurements are approximate.  
 The floorplan is for illustrative purposes only and not to scale.  
 © www.perspective.co.uk

This floorplan is for illustration purposes only and is not to scale. The position and size of doors, windows, appliances and other features are approximate.



Chiswick | 020 8994 7096 | chiswick@winkworth.co.uk



for every step...

winkworth.co.uk

Winkworth wishes to inform prospective buyers and tenants that these particulars are a guide and act as information only. All our details are given in good faith and believed to be correct at the time of printing but they don't form part of an offer or contract. No Winkworth employee has authority to make or give any representation or warranty in relation to this property. All fixtures and fittings, whether fitted or not are deemed removable by the vendor unless stated otherwise and room sizes are measured between internal wall surfaces, including furnishings.