



SEYMOUR PLACE, MARYLEBONE, W1H
£995,000 LEASEHOLD

LOCATED IN W1H - MARYLEBONE, A LIGHT AND WELL-PROPORTIONED
FIRST FLOOR TWO DOUBLE BEDROOM APARTMENT, SET IN A
HANDSOME 1930'S PURPOSE BUILT PORTERED BUILDING.

Paddington | 020 7467 5770 | paddington@winkworth.co.uk

Winkworth

for every step...

winkworth.co.uk



DESCRIPTION: A feature of note includes an attractive canted bay window set within the large east / south aspect double reception room giving an abundance of natural light. The apartment also includes generous ceiling heights and three private balconies. Located on the sought after tree lined Seymour Place and only a short distance to Marylebone High Street with its vibrant stretch of shops, restaurants and cafes. To the south are the open spaces and recreational facilities of Hyde Park. The property is ideally placed for convenient transport links including Edgware Road (Circle / District & Hammersmith & City) Marylebone (Bakerloo), Marble Arch (Central), Baker Street (Jubilee/Bakerloo), and Paddington (Elizabeth & mainline Station).

LEASE: ABOUT 93 YEARS REMAINING | SERVICE CHARGE: ABOUT £7,200 P/A (INCL RESERVE FUND) | GROUND RENT: £50 P/A



Winkworth

for every step...



Winkworth

for every step...

Sherwood Court

Approximate Gross Internal Area = 77.1 sq m / 830 sq ft

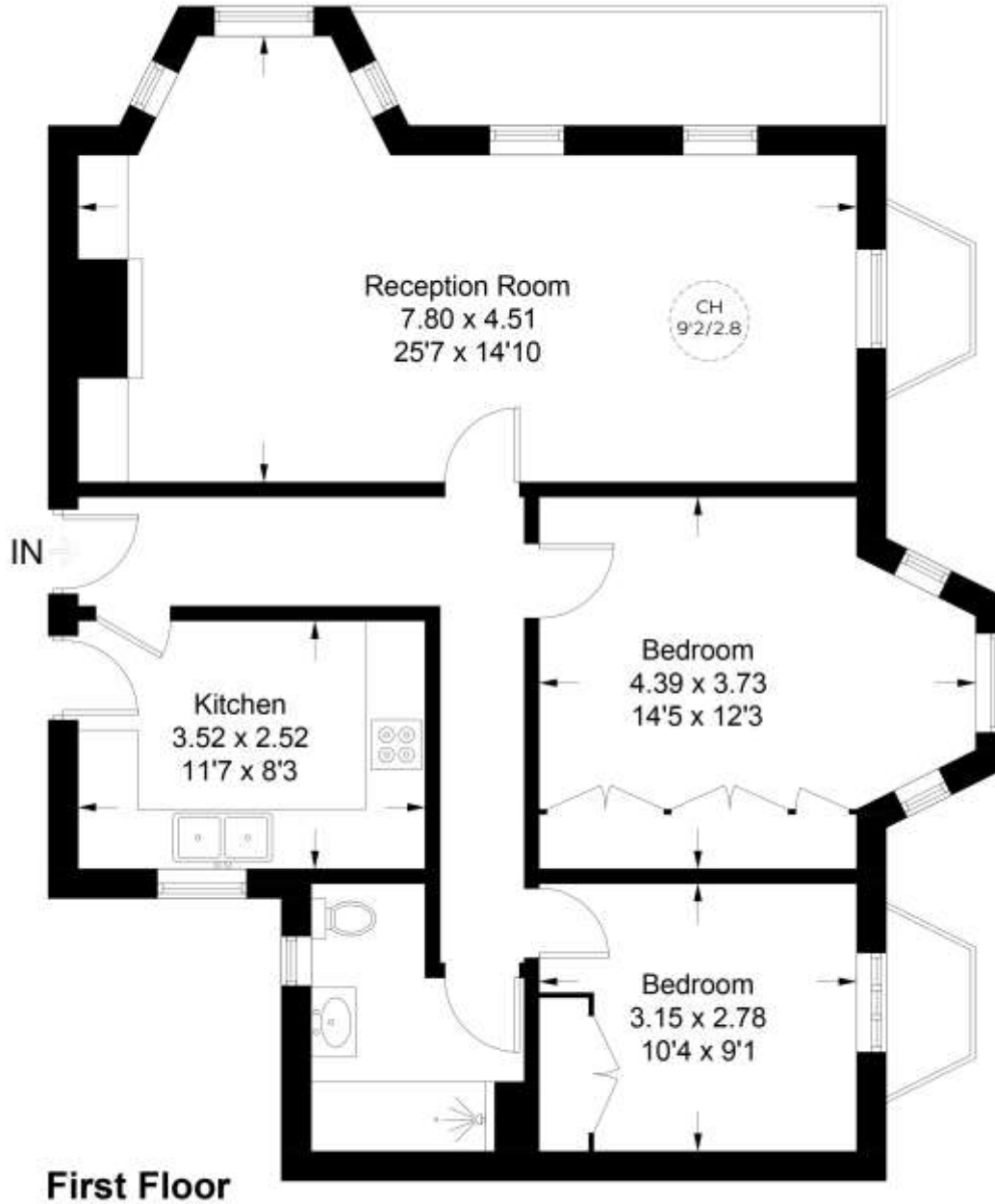
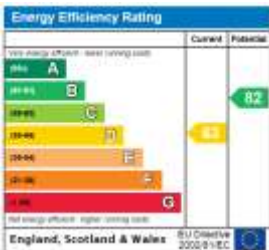


Illustration for identification purposes only, measurements are approximate, not to scale. floorplansUsketch.com © (ID788791)

This floorplan is for illustration purposes only and is not to scale. The position and size of doors, windows, appliances and other features are approximate.



Paddington | 020 7467 5770 | paddington@winkworth.co.uk



for every step...

winkworth.co.uk

Winkworth wishes to inform prospective buyers and tenants that these particulars are a guide and act as information only. All our details are given in good faith and believed to be correct at the time of printing but they don't form part of an offer or contract. No Winkworth employee has authority to make or give any representation or warranty in relation to this property. All fixtures and fittings, whether fitted or not are deemed removable by the vendor unless stated otherwise and room sizes are measured between internal wall surfaces, including furnishings.